

Westside Creeks Restoration Oversight Committee

August 15, 2023



Agenda

- I. **Welcome** – Robert Ramirez & Skye Curd, Committee Co-chairs
- II. **Roll call** – Meera Nguyen, San Antonio River Authority
- III. **Approval of meeting minutes**, June 20, 2023
- IV. **Calendar items**, Meera Nguyen, San Antonio River Authority
- V. **General manager updates**, Derek Boese, River Authority
- VI. **Vegetation baseline studies** – Lee Marlowe, River Authority
- VII. **Upcoming design meetings & Funding review**, Brian Mast, River Authority
- VIII. **Review of July Public Input Session**, Rebecca Krug, River Authority
- IX. **Citizens to be heard**
- X. **Miscellaneous items**
- XI. **Adjourn**

Public Participation:

Comments during the public comment portion are also limited to three (3) minutes and we ask that time not be transferred to another individual.



Agenda
June 20, 2023
Westside Creeks Restoration
Oversight Committee (WCROC) Meeting
6:00 p.m.

START RECORDING

Roll Call

Organization Name	Member Name	Alternate Member
Co-Chair	Robert Ramirez	
Co-Chair	Skye Curd	
Alazán Resident Council	Christina Barbosa	
Avenida Guadalupe	Gabriel Velasquez	
Beacon Hill Neighborhood Association	Jerry Lockey	
Bexar Audubon Society	Rita Avery	
Historic Westside Residents Association	Mary Ann Valdez-Hernandez	
Los Bexareños Genealogical Society	Barbara Chavez	
Opportunity Home San Antonio	Michael Lopez	
Our Lady of the Lake University	Brianna Salas	Adam Bynum
Prosper West	Ramiro Gonzales	
Prospect Hill Neighborhood Association	Jeremy Landin	Russell Felan
River Aid San Antonio	Charles Blank	
San Antonio Alternative Housing Corporation	Rick Rodriguez	
San Antonio Conservation Society	Kate Ruckman	
San Antonio Independent School District	Patti Radle	Anna Alicia Romero
San Antonio Wheelman	Abel Ramirez	
St. Mary's University	William "Bill" Buhrman	Evelynn Mitchell
TexasTejano.com	Kamala Platt	
University of Texas at San Antonio	Albert Salgado	
United San Antonio Pow Wow Inc.	Erwin DeLuna	
Woodlawn Lake Neighborhood Association	Charles Oisten	

Approval of minutes

Calendar Items

Yoga on the Creek

- Monday's at 6pm
- San Pedro Creek Culture Park / St. James A.M.E.C. Culture Crossing

Mission Reach Community Briefing

- Saturday, July 22nd – 9am
- Tafolla Middle School Cafeteria

San Pedro Creek Sub-Committee Meeting

- Thursday, September 14th - 9am
- River Authority Boardroom

WSC 35% Design Information Session

- Thursday, September 18th – 21st – 6pm 7:30pm
- Various Locations

Westside Creeks Restoration Oversight Committee

- Tuesday, October 17th - 6pm
- River Authority Boardroom/Virtual

General Manager Update

August 2023



Bexar County - Zarzamora Creek Trail Connection

BCCTP

- The River Authority is providing project management for the design and construction of the 2.5-mile continuation of Zarzamora Creek Trail from Alderete Park to Tierra Del Sol Park. The design will include multiple connections with existing parks and street crossings with various levels of service including park amenities and wayfinding signage.



Bexar County- Zarzamora Creek Trail Connection

What's been done in the previous month:

- Scope and Fee for Alternate Alignment including Tree Mitigation and Trail Lighting approved and submitted to finance for Transfer of additional funds from Construction to Design
 - *CoSA to reimburse for the difference of cost above total contract value during Construction*

What will be done in the coming month:

- Contract Amendment
- Issue NTP
- Re-Kickoff meeting with County, CoSA, SARA and Design Team (Early September)

What assistance is needed:

- None at this time

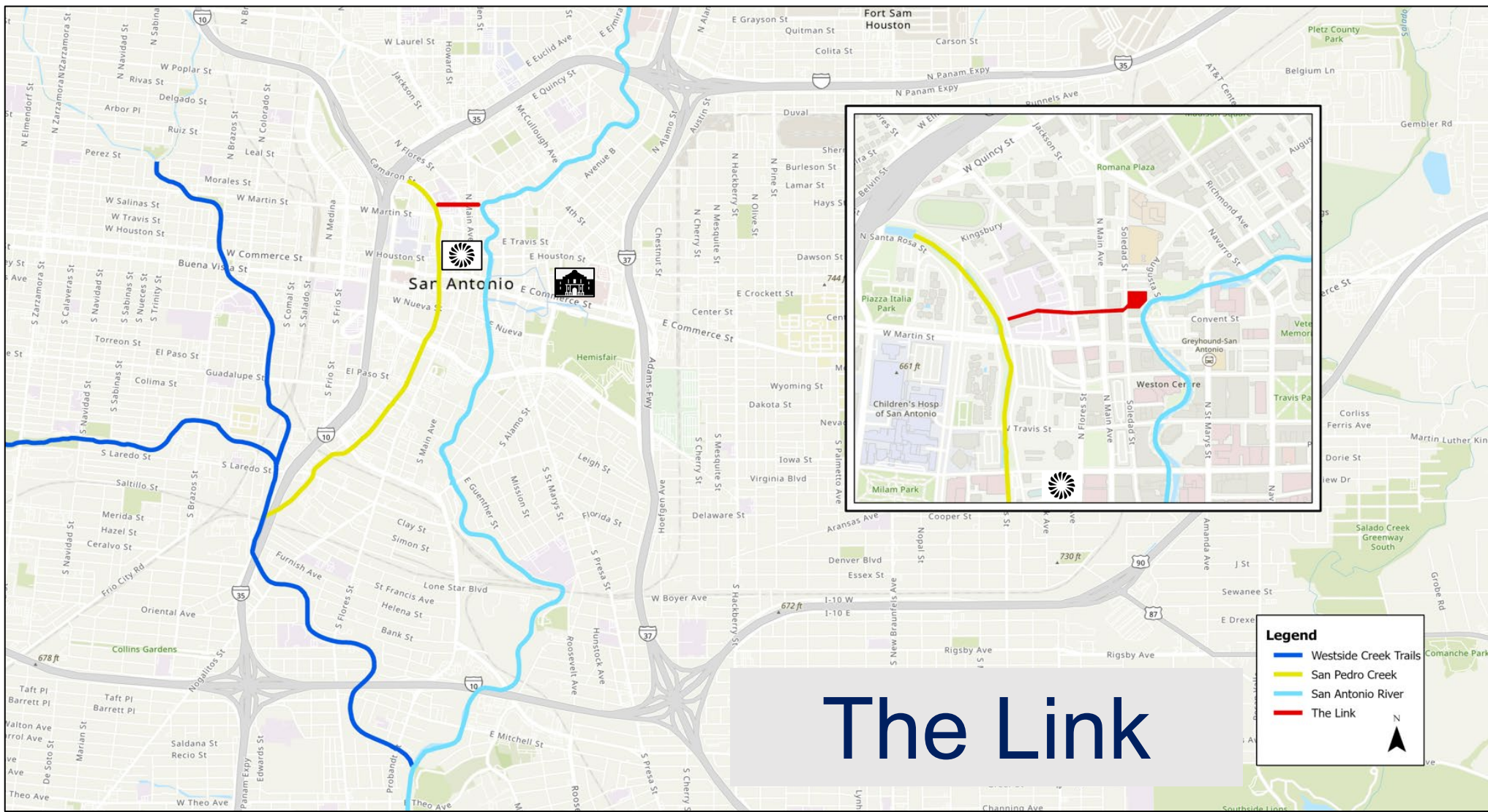


Zarzamora Creek Trail Connection

Design Schedule

- **30% Design/PER - 90 days (August – December 2023)**
 - **Public Meeting Jan/Feb 2023 presented at LCPAB Monthly Meeting**
- **60% Design – 75 days (January 2023 – March 2024)**
- **90% Design – 60 days (April 2024 – July 2024)**
- **100% Design - 30 days (July 2024 – August 2024)**
- **Construction Anticipated start date – January 2025**

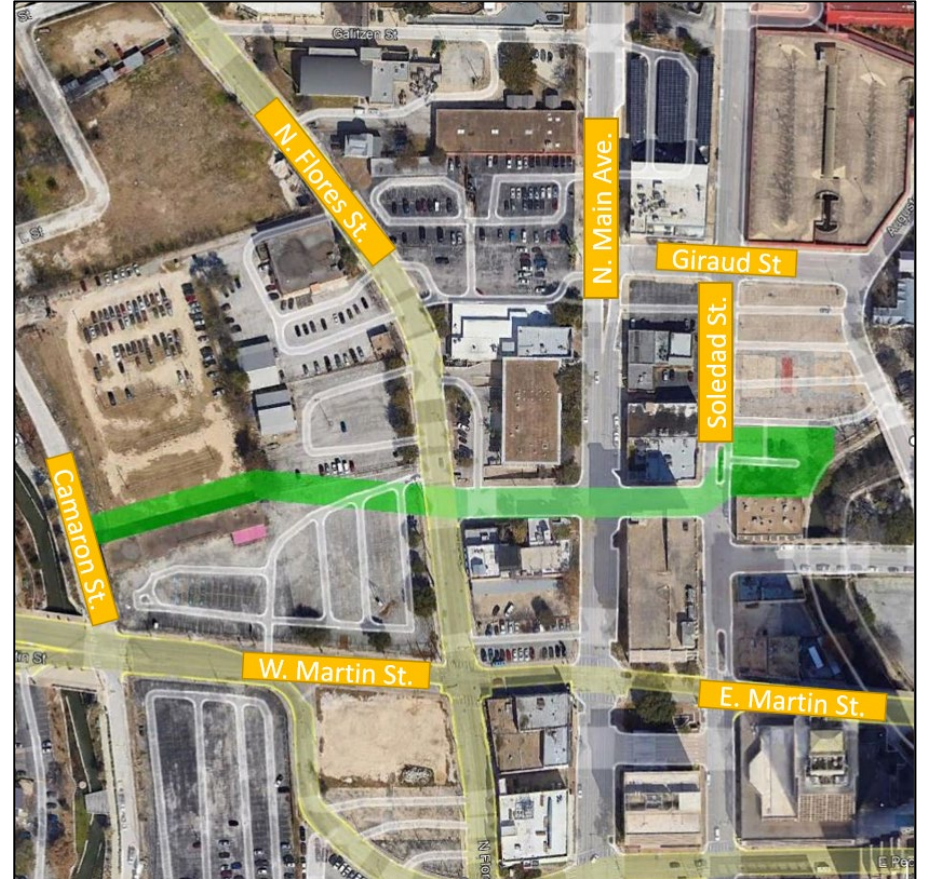




The Link

The Link

- Project Goal:
 - Develop a Preliminary Engineering Report (PER) & Opinion of Probable Construction Cost (OPCC)
- Evaluate three design concepts:
 - 1) River Walk Level
 - 2) Hybrid Approach
 - 3) Street Level
- \$2 Million Cost of PER from Bexar County



Upcoming/Ongoing Activities

- Modeling of potential impacts to water levels
- Development of a character design booklet and summary of design options
- Cultural resources assessment



Schedule Overview

- Kicked-off February 16th
- June 21st stakeholder engagement mtg of 60% PER
- Feasibility study (w/cost estimate) will be completed in October
- Project completion full public engagement late October or early November



San Pedro Creek Improvements Project

Phase 2:

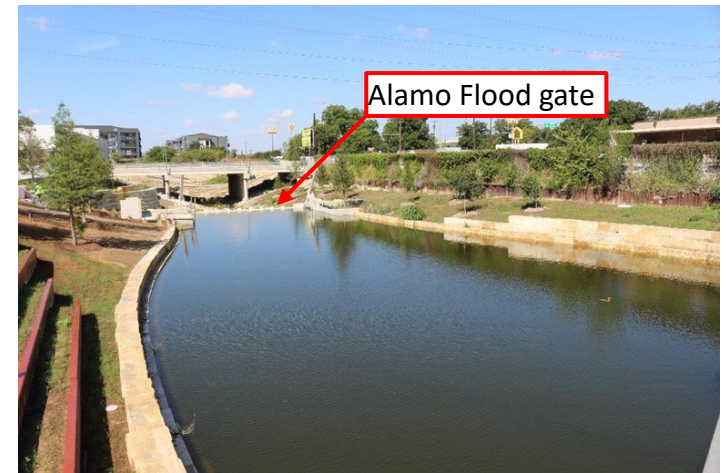
Guadalupe St to S. Alamo St.

Estimated Completion: Summer 2023

- Alamo Street gatehouse and restrooms are nearly complete.
- Water has been impounded into Phase 2 up to the Alamo flood gate.
- Most of the trees have been planted and the irrigation is running



Southeast of Camp Street, near the Alamo Gatehouse and Ruby City, many of the trees have been planted



West bank of the Phase 2 channel, south of Camp Street



San Pedro Creek Improvements Project

Phase 3:

Alamo St to Confluence w/ Apache Creek

Estimated Completion: Winter 2023

- Paseos and walls are nearing completion along the west bank.
- The contractor is preparing to make the connection to Apache creek.

Phase 4.1:

Guadalupe St. to El Paso St.

Estimated Completion: Summer 2023

- Electrical conduits and water lines are being installed.
- Begun modifications to the parking lot.
- Planting is underway.



Phase 3 north of Cevallos Street



Planting as seen from El Paso Street





<https://spcculturepark.com/about/the-project/>



Westside Creeks Baseline Vegetation Study

Presented to Westside Creeks Oversight Committee
August 15, 2023



Westside Creeks Baseline Vegetation Study

- Baseline studies help us understand the existing conditions, serve as a benchmark against future conditions, and will help inform the design of the project.
- Post construction studies will be done to determine changes following ecosystem restoration and help us understand ecological lift resulting from the project.

Westside Creeks Baseline Vegetation Study

Overview

- Rapid visual areal cover assessment
- 4 cover groups:
 - Aquatic
 - Meadow
 - Meadow with trees/shrubs
 - Woodland
- 3 composition types:
 - Native prevalent
 - Mixed native/non-native
 - Non-native prevalent



Westside Creeks Baseline Vegetation Study

Mapping Vegetation Cover Types



Westside Creeks Baseline Vegetation Study

Mapping Vegetation Cover Types



Westside Creeks Baseline Vegetation Study

Prevalent Cover = Non-native Meadow



Perennial Ryegrass, *Lolium perenne*



KR Bluestem, *Bothriochloa ischaemum*
Johnsongrass, *Sorghum halepense*

Westside Creeks Baseline Vegetation Study

Native Meadow Species



Pink Evening Primrose,
Oenothera speciosa



Plains Coreopsis, *Coreopsis tinctoria*
Common Sunflower, *Helianthus annuus*



Giant Ragweed,
Ambrosia trifida

Westside Creeks Baseline Vegetation Study

Native Aquatic Species



Floating Primrose-willow,
Ludwigia peploides



Diverse native aquatic plant communities

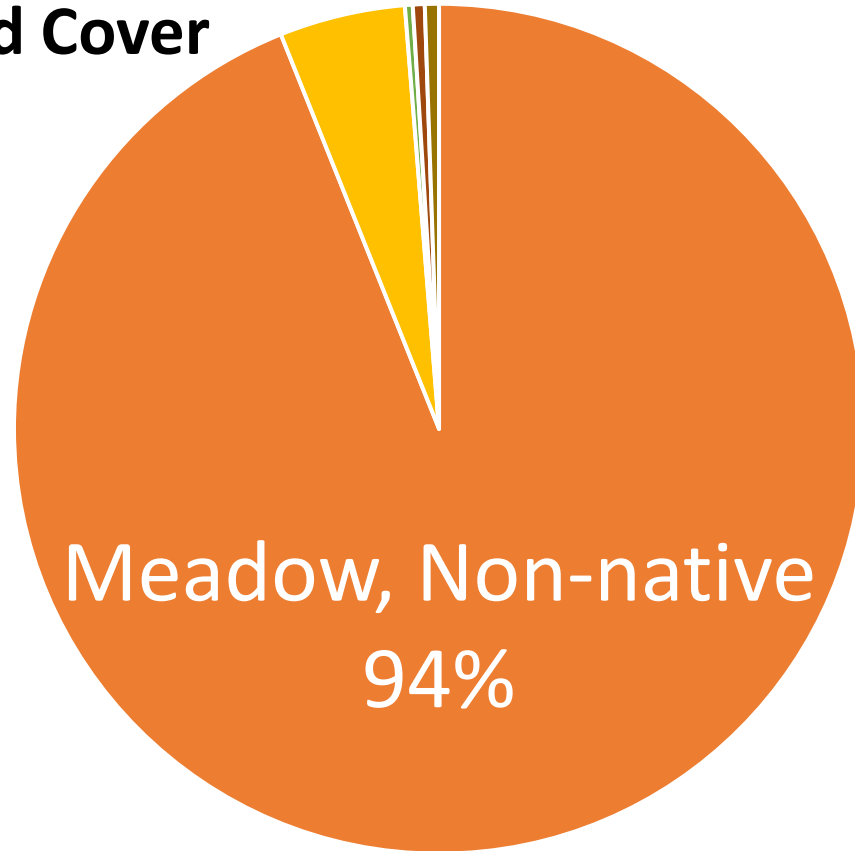


California Loosestrife,
Lythrum californicum

Westside Creeks Baseline Vegetation Study



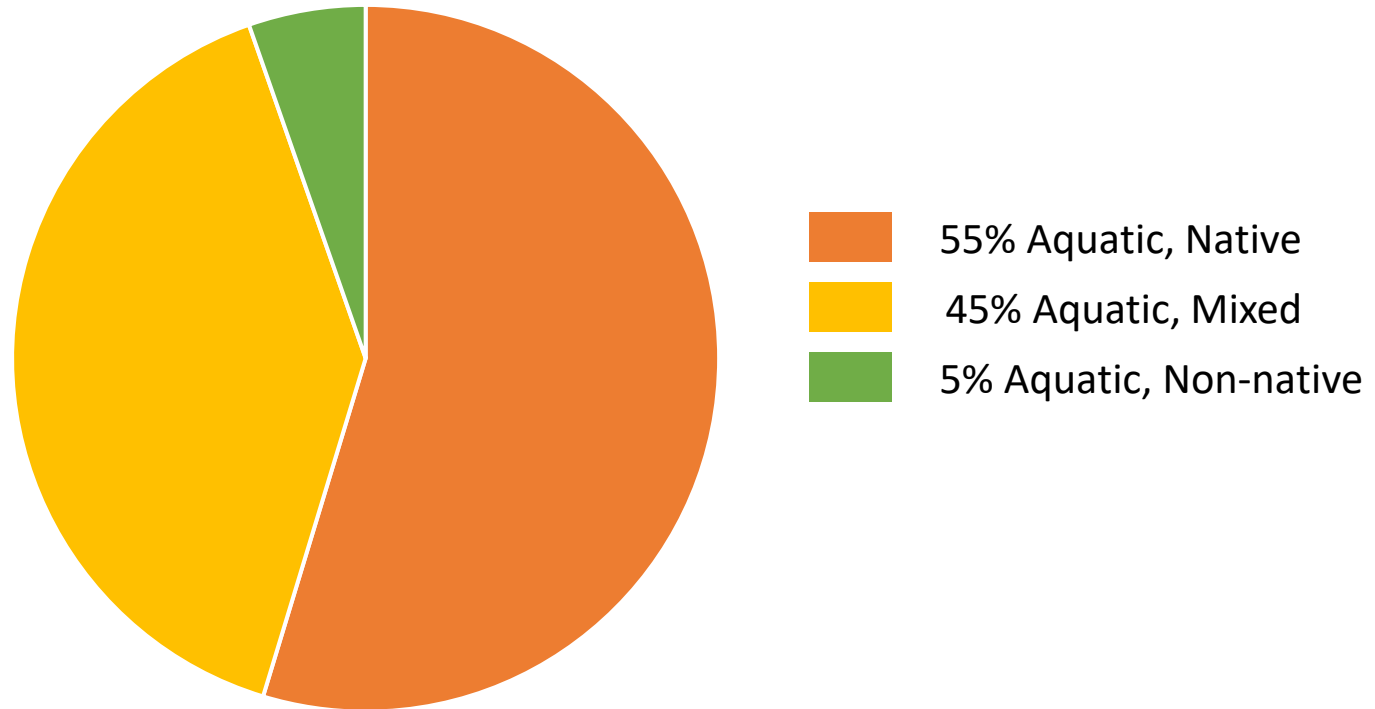
Upland Cover



- 4.7% No cover data, mowed
- 0.3% Meadow, Native
- 0.5% Woodland, Mixed
- 0.5% Meadow w/Trees & Shrubs, Native

Westside Creeks Baseline Vegetation Study

Aquatic Cover = 1.12% of Total Cover (approximately 1.6 acres)



Westside Creeks Baseline Vegetation Study

Thank You!

Lee Marlowe

Sustainable Landscape Ecologist

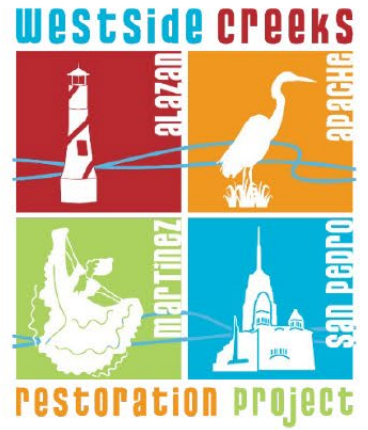
210.302.3624

lmарlowe@sariverauthority.org



Funding Review & Upcoming Design Meetings

August 15, 2023



Cost Share

- Project Cost Shares (Fed and Local)
 - ~65% federal / ~35% local
 - Local betterments above base project 100% locally funded

Project Cost Estimates

- May 2014, Feasibility Study - \$67.5M
- April 2021, updated cost estimate - \$115.4M
 - 65% (~\$77M) federal – 35% (~\$38M) local
 - Inflation
- July 2022, unofficial updated cost estimate - \$227.9M
 - All USACE projects funded by Bipartisan Infrastructure Law (BIL)
 - Walla Walla, Washington
 - Very conservative - inflation, 44% contingency
 - 65% (~\$147.9M) federal – 35% (~\$80M) local

Secured Federal Funding

- Administration's FY 22 Budget
 - \$2.34 million from U.S. Army Corps of Engineers (USACE) **General Investigations Account** for preconstruction engineering and design (PED) of WSC Ecosystem Restoration
 - **General Investigations** funding for PED requires entering into a **Design Agreement (DA)**

Secured Federal Funding

- **Bipartisan Infrastructure Law (BIL) USACE Work Plan**
 - \$75,042,000 – initiate physically complete, and fiscally closeout the construction project, including all future monitoring and adaptive management
 - Funding through BIL is through USACE **Construction General Account**
 - **Construction General Account** funding requires entering into a **Project Partnership Agreement (PPA)**
 - Design contract for all four creeks was procured by the Corps of Engineers

Colors of Federal Funds

Administration's Budget

\$2.34M Federal Share
General Investigations



Design Agreement (DA)
Preconstruction Engineering and Design (PED)
Initial USACE Investment

BIL Funding

\$75M Federal Share
Construction General



Project Partnership Agreement (PPA)
Any additional PED and Construction
Project Completion

USACE & River Authority Agreements

- Design Agreement – for the design of San Pedro Creek ecosystem restoration
 - Executed July 2022
- Project Partnership Agreement – for the ecosystem restoration design of Alazán, Apache and Martinez creeks and construction of all four creeks (Alazán, Apache, Martinez and San Pedro)
 - Executed September 2022

Local Funding

- October 2022 - Bexar County will approve initial Task Order for the local portion of the project design
 - \$15M - local funding share for design of all creeks

35% Design Public Information Meetings



Information Sessions: 35% Design

ALL SESSIONS ARE 6 PM – 7:30 PM

- | | |
|-------------------------------|--|
| MON., SEPT. 18, 2023 | SAN ANTONIO RIVER AUTHORITY BOARDROOM
100 E. GUENTHER ST. |
| TUES., SEPT. 19, 2023 | ALAZÁN APACHE COURTS • 1011 S BRAZOS ST. |
| WED., SEPT. 20, 2023 | ALAZÁN APACHE COURTS • 1011 S BRAZOS ST. |
| THURS., SEPT. 21, 2023 | HUISACHE AVENUE BAPTIST CHURCH
1339 W HUISACHE AVE. |



On-site Spanish translation services will be available

The project design for each of the four Westside Creeks is underway and has reached 35% completion. We invite you to come learn about the design plan for your neighborhood creek and meet with project staff from US Army Corps of Engineers, their design firm Michael Baker International – Huwitt - Zollars, Inc., and the San Antonio River Authority. You can preview the presentations and submit comments/questions online at westsidecreeks.com. Join us for the first round of community information sessions.

210-227-1373 WESTSIDECREEKS.COM



Review of July Public Input Session & Status Report

June 20, 2023



WSC ER: Predesign Activity Update

- Pre-design surveys near completion
 - Last of the survey field work to obtain sewer data
 - Geotech on hold pending location input from design team
- Notice to Proceed for Real Estate
- Apache Creek Remediation project underway
 - Target completion Fall 2025 before Restoration Construction begins

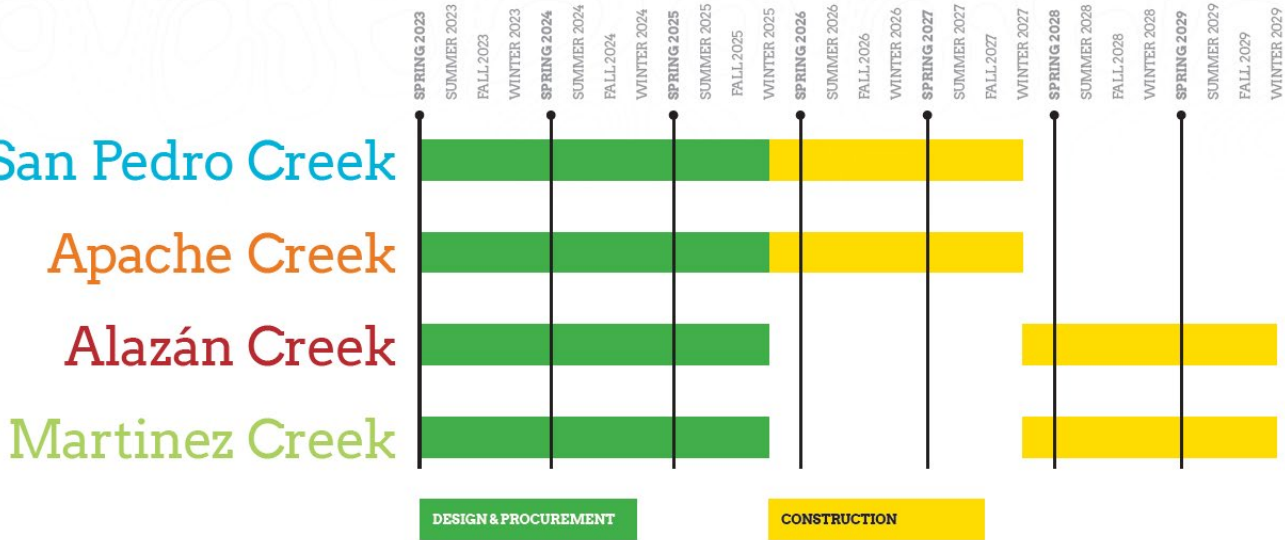


WSC ER: Schedule



Current Project Design Timeline

- Design all 4 creeks together
 - Spring 2023 → Winter 2025
- Phased Construction
 - San Pedro and Apache: Winter 2025 → Winter 2027
 - Alazán and Martínez: Winter 2027 → Winter 2029



WSC ER: Rec Features

- July 22 Public Input Session @ Tafolla MS
- ~ 130 attendees
- ~ 30 volunteers
- Proposed locations for Recreational Features
- Next Steps
 - Funding coordination with City and County for “extra” features = Betterments
 - Provide types, number, locations to Design Team



WSC ER: Rec Features

Improve Community Connectivity



Access to Nature



Showcase Art and Cultural Heritage



Educational Opportunities



Recreational Features will enhance the Ecosystem Restoration project

WSC ER: Rec Features

Rest Area

Bench, Trash Can, Water Fountain



Picnic Area

Shade Structure, Picnic Table, Trash Can, Water Fountain



Trailhead

Signs, Trash Can, Water Fountain



Scenic Overlook

Elevated observation platform



Fishing Pier

Deck overlooking a water feature



WSC ER: Rec Features

San Pedro Creek – Existing Features

- Existing hike and bike trail on the North Bank
- Existing street connections:
 - W. Mitchell St.
 - Cass Ave.
 - Klein St.
 - Nogalitos St.
 - Ralph Ave.
 - Furnish Ave
- Existing Shade structure with picnic table at Klein St. Trailhead

**Before: Avg.
2.5 trailheads
per mile**



WSC ER: Rec Features

San Pedro Creek – Proposed New Features

- 1 Pedestrian Trailhead @ Riverview Dr.
- 1 Scenic Overlook @ Conner St.
- 4 Water Fountains
- 4 Rest Areas with shade structures and benches
- 6 Picnic Areas with Tables and Trashcans



**After: Avg.
~ 3 trailheads per mile**



WSC ER: Rec Features

Apache Creek – Existing Features

- Existing hike and bike trail on North Bank, older trail along Apache Creek Park
- 3 Pedestrian Bridges
- 1 Low Water Crossings
- 21 Existing Trailheads
- 5 trail adjacent parking lots
- 4 City Parks with some shade structures, benches, and picnic areas bordering the creek

**Before: Avg.
8 trailheads
per mile**



WSC ER: Rec Features

Apache Creek – Proposed New Features

- 2 Vehicular Trailheads @ El Paso St. and S. San Jacinto St.
- 8 Water fountains
- 12 Rest Areas with shade structures and benches
- 15 Picnic Areas with trashcans

After: Avg. 9 trailheads per mile

**Enhance
existing
trailheads
and parks**



WSC ER: Rec Features

Alazán Creek – Existing Features

- Existing hike and bike trail
- 2 Pedestrian Bridges
- 4 Low Water Crossings
- 12 Trailheads

**Before: Avg.
3 trailheads
per mile**

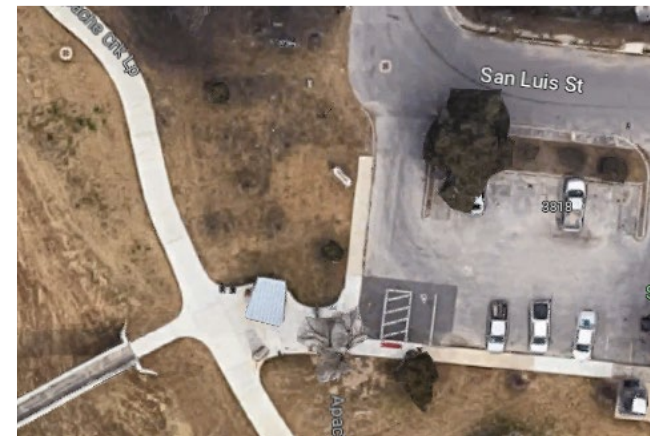
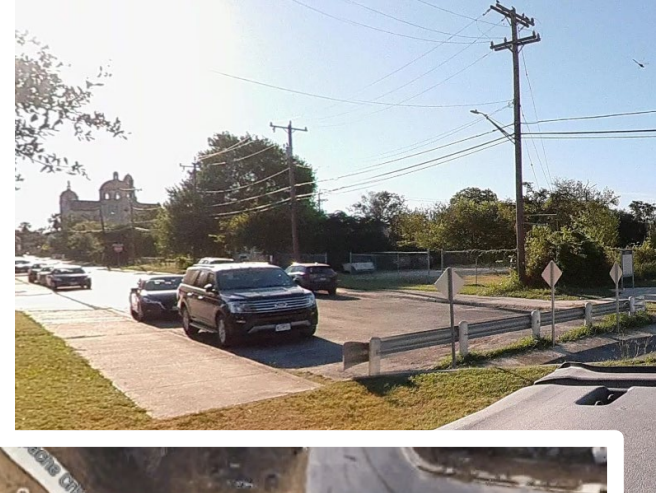


WSC ER: Rec Features

Alazán Creek – Proposed New Features

- 6 Vehicular Trailheads
- 1 Pedestrian Trailhead
- 1 Fishing Pier @ Tobin Park
- ~ 5 trailheads per mile
- 9 Water fountains
- 9 Rest Areas with shade structures and benches
- 7 Picnic Areas with trashcans

**After: Avg.
5 trailheads
per mile**



WSC ER: Rec Features

Martinez Creek – Existing Features

- Existing hike and bike trails between Cincinnati Ave. and Fredericksburg Ave.
- 6 Trailheads
- City trail project will be completed with the Restoration Project



**Average
2.5 trailheads
per mile**

WSC ER: Rec Features

Martinez Creek – Proposed New Features

- 1 Pedestrian Bridge @ Texas Ave. →
Navidad St./University Ave.
- 1 Fishing Pier @ Ojeda Park
- 1 Scenic Overlook @ Farias Park
(Alazán/Martinez Confluence)
- 5 Vehicular Trailheads
- 4 Pedestrian Trailheads
- 9 Water fountains
- 6 Rest Areas with shade structures and
benches
- 10 Picnic Areas with tables and trashcans

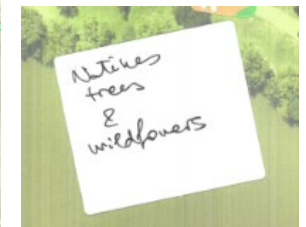


**After: Avg.
6 trailheads
per mile**

WSC ER: Rec Features

Other Feedback

- Stormwater quality to reduce runoff pollution to the creeks
- I-10 Connectivity Martinez Creek
- Outside of Scope requests
 - Woodlawn Lake and Elmendorf Lake
 - N. San Pedro Creek connectivity
 - Safety and Security Concerns
 - Dog Parks
- Trees and Wildflowers



Questions?

Citizens to be heard

Miscellaneous

Adjourn