

WESTSIDE CREEKS RESTORATION OVERSIGHT COMMITTEE QUARTERLY MEETING



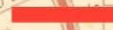


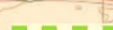



LINEAR CREEKWAY TRAILS

Reuben Bazan, Richard De La Cruz, P.E., Meera Keshav
August 17, 2021

Westside Creeks Linear Trails Project



Legend

-  Alazan Creek
-  Alazan Creek
-  Martinez Creek
-  Martinez Creek (Under Design)
-  Apache Creek
-  Zarzamora Creek
-  San Pedro Creek (UNDER CONSTRUCTION)

Zarzamora Creek Trail
Substantial
Completion
Fall 2021

Martinez Creek Trail
100% Design Phase.
Bid Date TBD.

Alazan Creek Trail
Construction Phase
Completion Fall 2021

(UNDER CONSTRUCTION)

Apache Creek Trail
Construction
2021

Downtown San Antonio

APACHE CREEK TRAIL

Apache Creek Trail



APACHE CREEK TRAIL

TRAIL DETAILS

- **Joint Bid contract between SAWS and CoSA. SARA managing hike and bike trail and park amenities.**
- **Trail connects Elmendorf lake and Cassiano park.**
- **Project amenities to include shade structure, tables & benches, trash receptacles, drinking fountain, signage and ADA parking**
- **Contractor award substantial completion in July 2021. Punch list items remain 2 non ADA compliant locations and vegetation.**



APACHE CREEK TRAIL

CONSTRUCTION PHASE – OSCAR RENDA



APACHE CREEK TRAIL

CONSTRUCTION PHASE – OSCAR RENDA



ZARZAMORA CREEK TRAIL

TRAIL DETAILS

- **Phase I – Approx. 1.0 Miles long – 10' wide concrete hike & bike trail from Knoke St. to Memorial St.**
- **Phase II – Approx. 0.45 miles long – 10' wide concrete hike & bike trail from Memorial St. to Alderete Park (add alternate)**
- **8 overall trail street connections**
- **Trailheads at the pedestrian bridge at 29th Street, San Ignacio and Alderete Park.**
- **Park amenities to include shade structures, drinking fountains, benches, signage, trash receptacles and solar lights at trailheads.**



ZARZAMORA CREEK TRAIL

CONSTRUCTION PHASE – CONTRACTOR RCO, LLC

- **Concrete trail continuous between Aldrete Park and Gen McMullen with exception of creek crossing and SAWS conflict at San Felipe**
- **Issued a stop work order due to SAWS conflict at San Felipe on April 1, 2021, until late June.**
- **Contractor has completed concrete trail (with exception of SAWS conflict and creek crossing) and retaining walls. vegetation and signage**
- **Contractor is working on vegetation, park amenities, signage and the SAWS conflict area.**
- **Rain delays and damage have occurred in the past 4 months. Substantial completion expected in Fall of 2021.**



ZARZAMORA CREEK TRAIL

Zarzamora Creek Trail



ZARZAMORA CREEK TRAIL

CONSTRUCTION PHASE – CONTRACTOR RCO, LLC



ZARZAMORA CREEK TRAIL

CONSTRUCTION PHASE – CONTRACTOR RCO, LLC



ALAZAN CREEK TRAIL - PROJECT LOCATION



Alazan Creek Trail
2.90 miles long
10' wide hike & bike trail



ALAZAN CREEK TRAIL

TRAIL DETAILS

- **2.9 mile long – 10' wide concrete hike & bike trail from Lombrano St. to confluence at Apache creek**
- **5 total street connections (Lombrano, Poplar, Guadalupe, Arbor Pl, Colorado St.)**
- **Connects to Existing trail at Woodlawn Lake (North) and Apache Creek confluence (south)**
- **Awarded Contractor – SpawGlass Civil Construction**
- **Construction start date – February 17, 2020**
- **Expected fall 2021**
- **Contract amount - \$8,665,031.33**



ALAZAN CREEK TRAIL

CONSTRUCTION PHASE

- **Stone pavement completed at Poplar, Arbor Place, Colorado St.**
- **Stone seating wall at Elmendorf/Poplar St. and Arbor Place.**
- **Retaining wall construction is ongoing.**
- **Concrete trail installation ongoing near railroad bridge.**
- **Railroad Bridge piers being constructed with canopy to be installed.**



ALAZAN CREEK TRAIL

TRAIL PHOTOS



Poplar St



Elmendorf St.



ALAZAN CREEK TRAIL

TRAIL PHOTOS



Arbor Place



Farias park



ALAZAN CREEK TRAIL

TRAIL PHOTOS



Retaining walls – Colorado St.



Colorado St. Connection

MARTINEZ CREEK TRAIL

DESIGN PHASE

- 1.45 miles long – 10' concrete hike & bike trail
- Ties to existing trail at Cincinnati (north) and Farias Park (south)
- 8 proposed street connections
- Project on hold awaiting funding

Questions?



Trash Outreach Initiative

August 2021

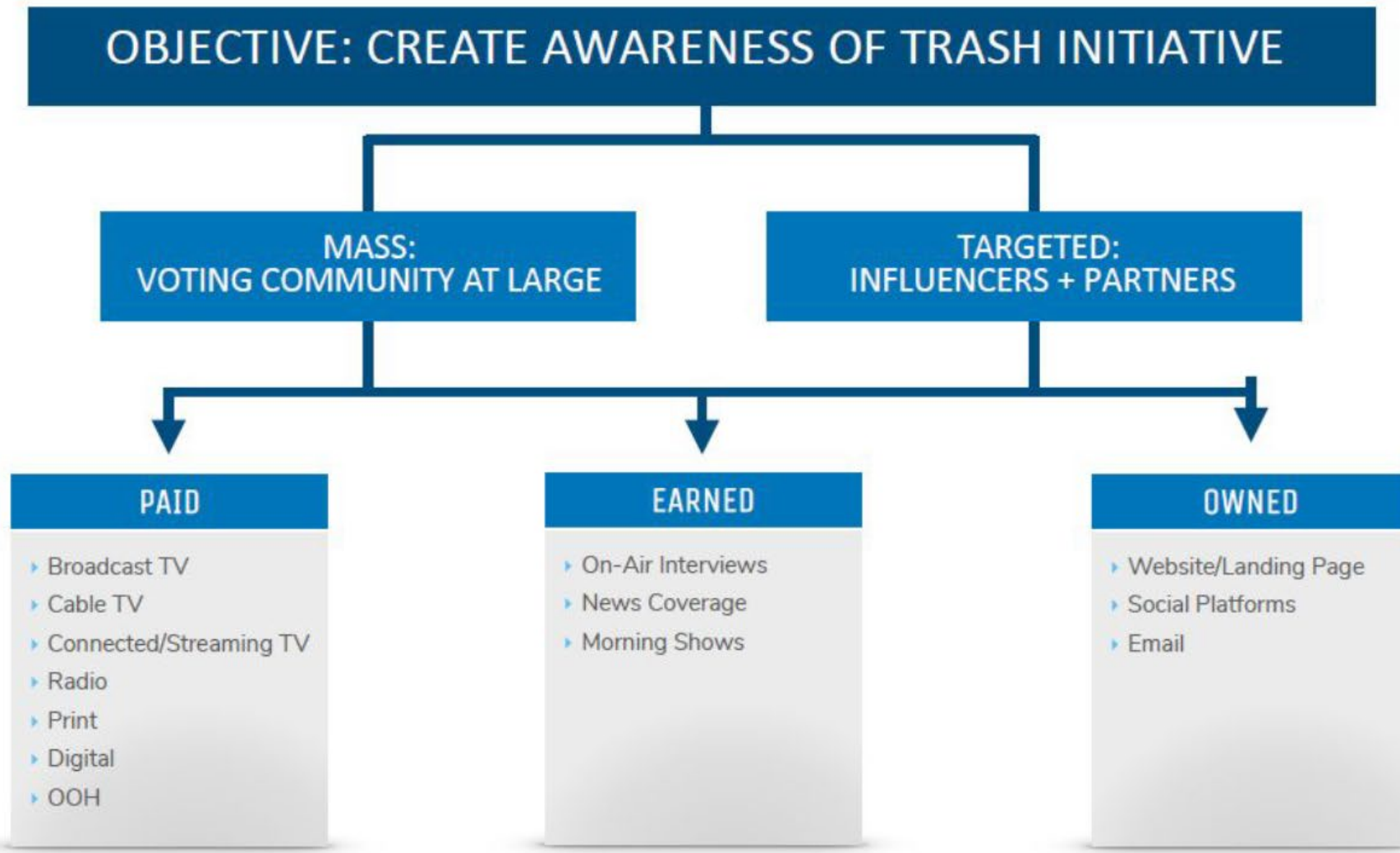


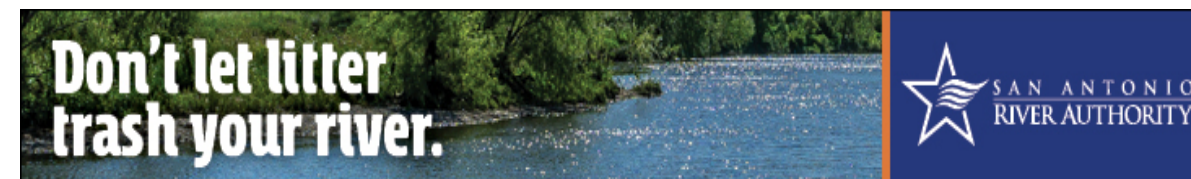
How and Why

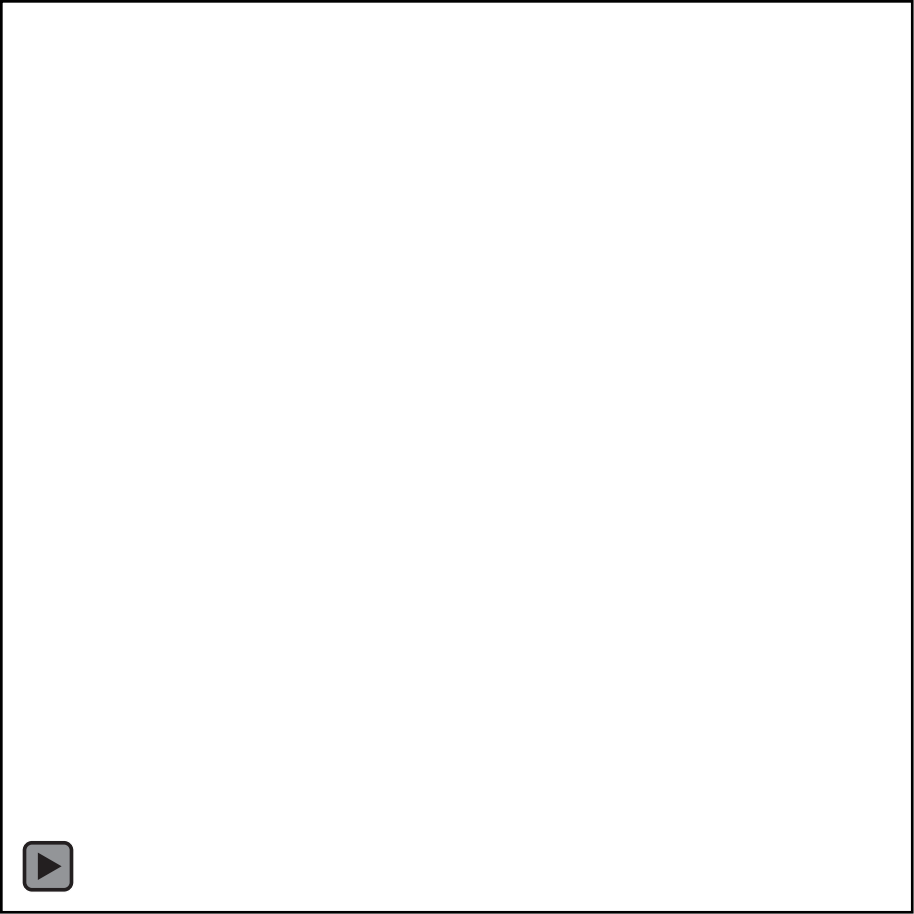
- Past constituent research demonstrates that citizens have an emotional reaction to trash in area creeks and rivers.
- San Antonio River Basin Report Card – F Rating for Public Trash
- Constituent research conducted by Guia Brand Communications and Texas Creative
- Qualitative research with internal and external groups by staff



Communications Plan









Committed to Safe, Clean, Enjoyable Creeks and Rivers.

Questions?



Westside Creeks Improvements Ecosystem Restoration



Westside Creeks Federal Funding

Brian Mast

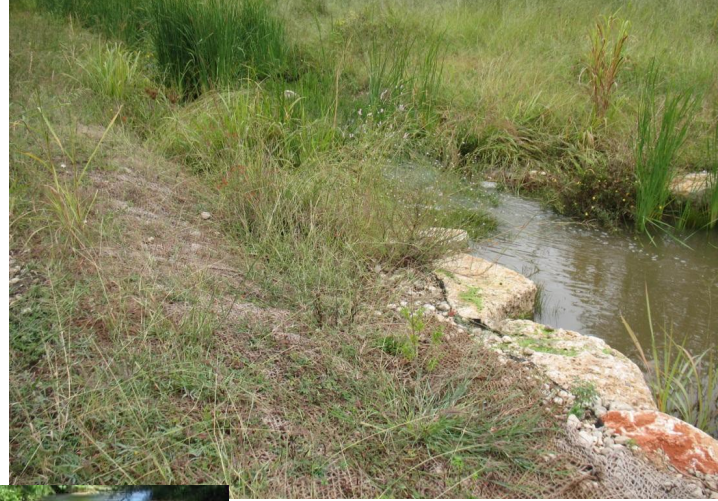
August 17, 2021

UPPER SAN ANTONIO RIVER WATERSHED



MISSION REACH Eagleland Project

Ecosystem Restoration and Recreation Project



Westside Creeks Ecosystem Restoration Update

- Dec. 2016 – OMB informed the Corps of Engineers that it “*does not object*” to the Corps submitting the WSC report to Congress for funding consideration.
- Jan. 2017 – Assistant Secretary of the Army, Jo-Ellen Darcy, reports that the Westside Creeks will be evaluated amongst other ecosystem restoration projects and prioritized as appropriate for budgetary considerations.
- FY 21 – Corps of Engineers Work Plan published 2 days before inauguration.
- FY 22 – Community Project Funding (earmark) – community support letters from Judge, Mayor, Chamber of Commerce and WSC Oversight Committee

FY 22 Federal Funding

- Administration's FY 22 Budget
 - \$2.34 million for preconstruction engineering and design (PED) of WSC Ecosystem Restoration
- FY 22 Energy and Water Development Appropriations Bill
 - Community Project funding (earmarks)
 - US Army Corps of Engineers (USACE) Work Plan

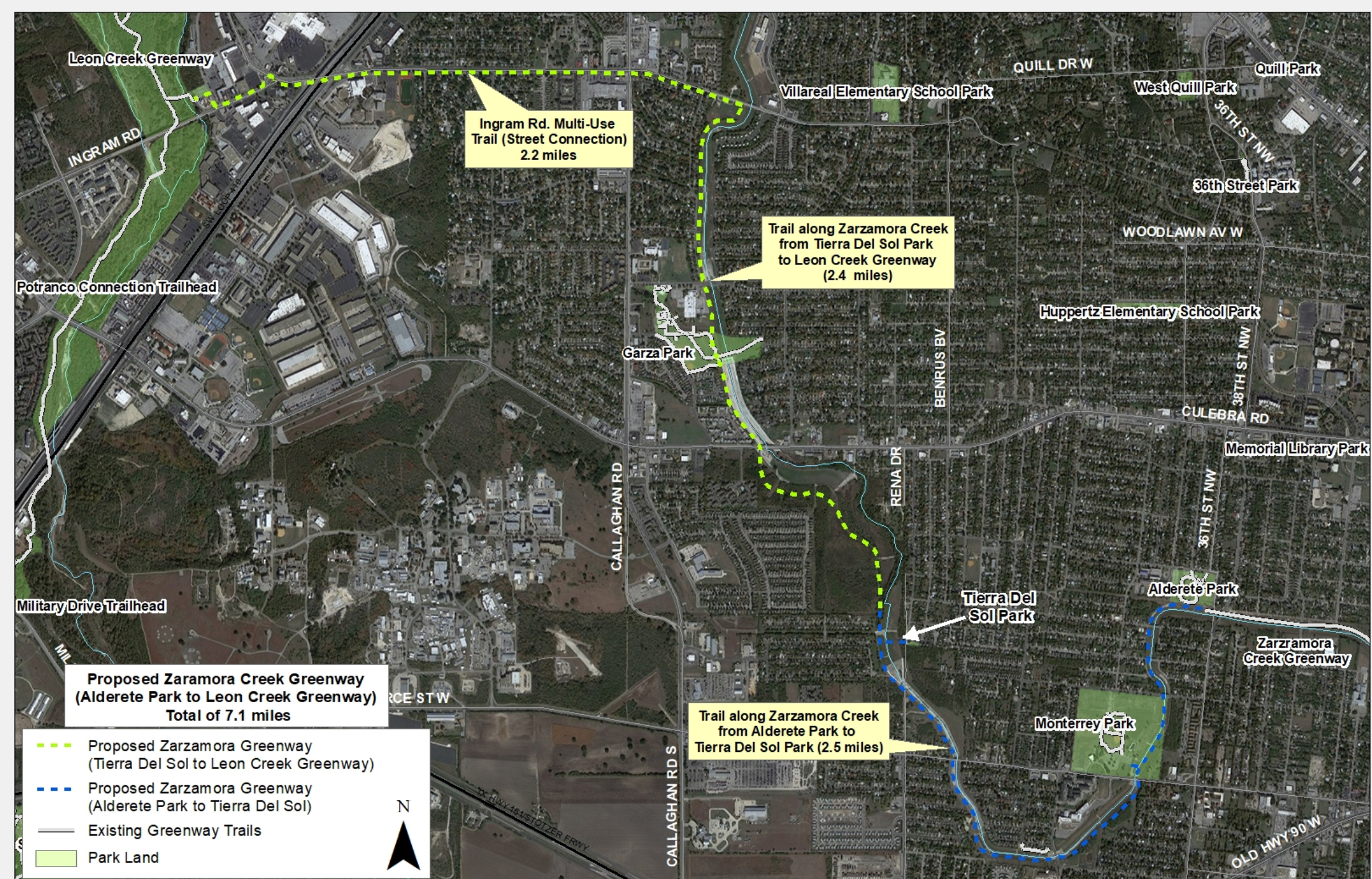
FY 22 Appropriation Status

- \$2.34 million included in House and Senate committee versions of FY 22 Energy and Water Development Appropriations bills
 - Passed House on July 29
 - Senate vote unlikely anytime soon
- USACE updated their FY 22 Work Plan request asking for an additional \$1.97 million for PED for the WSCs

Rebuilding **A**merican Infrastructure with Sustainability and **E**quity

Zarzamora Creek hike and bike trail

- City, County and River Authority coordinated the application submission
 - Support letters from chambers of commerce, stakeholder groups and others



Questions?



Westside Creeks Fish Kill Restitution

Tuesday, August 17, 2021



June/July 2020 Fish Kill

- Results
 - Approximately 5,500 dead fish
 - River Authority notified SAWS, SAWS issued a notice of violation June 30
 - River Authority notified TPWD on July 1, Restitution value calculated at \$33,750.73
 - River Authority notified the TCEQ on July 1



TCEQ Investigation

- Unauthorized discharge of ammonia (~7,000 lbs) resulting in a fish kill.
- Recommended Corrective Action:

Design, install, and maintain best management practices (BMPs) to prevent future releases and submit a signed documentation of such BMPs to the TCEQ. Additional recommended corrective actions may be provided by the Enforcement Division.



Environmental Impact

- 20 fish species impacted, 14 native species
- Total individuals impacted approximated
- Data submitted to TPWD for restitution calculation



Native Species
Spotted Bass
Largemouth Bass
Guadalupe Bass
Warmouth
Green Sunfish
Gizzard Shad
Yellow Bullhead
Bluegill
Central Stoneroller
Mexican Tetra
Amazon Molly
Western Mosquitofish
Sailfin Molly
Red Shiner
Grey Redhorse
Channel Catfish
Longear Sunfish
Common Carp
Blue Tilapia
Rio Grande Cichlid



Restitution Calculation

Species	Length	Count By Length	Weight Per Unit	-----Value Per Unit-----		Total Value Per Unit	Total For Length Class
				Basic Value Adjusted For Inflation	Recreational Value Adjusted For Inflation		
Green Sunfish <i>Lepomis cyanellus</i>							
	1	185	0.000000	\$0.1168797	\$0.0000000	\$0.1168797	\$21.62
	2	573	0.000000	\$0.4568935	\$0.0000000	\$0.4568935	\$261.80
	3	434	0.000000	\$0.5312715	\$0.0000000	\$0.5312715	\$230.57
	4	406	0.000000	\$0.7119038	\$0.0000000	\$0.7119038	\$289.03
	5	148	0.000000	\$0.9350379	\$0.6642832	\$1.5993210	\$236.70
	6	18	0.000000	\$1.2219245	\$1.3285663	\$2.5504908	\$45.91
Species Totals		1,764					\$1,085.63



Restitution Calculation

Species	Length	Count By Length	Weight Per Unit	-----Value Per Unit-----		Total Value Per Unit	Total For Length Class
				Basic Value Adjusted For Inflation	Recreational Value Adjusted For Inflation		
Largemouth Bass <i>Micropterus salmoides</i>							
	2	37	0.000000	\$1.1475465	\$0.0000000	\$1.1475465	\$42.46
	3	536	0.000000	\$1.2431754	\$0.0000000	\$1.2431754	\$666.34
	4	406	0.000000	\$1.8381995	\$0.0000000	\$1.8381995	\$746.31
	5	18	0.000000	\$2.2207150	\$0.0000000	\$2.2207150	\$39.97
	11	9	0.000000	\$6.6408940	\$68.7290037	\$75.3698977	\$678.33
	12	9	0.000000	\$7.4378013	\$80.1838377	\$87.6216390	\$788.59
Species Totals		1,015					\$2,962.00



Restitution Actions

- Six sites under evaluation for habitat introduction/augmentation
- Site visit planned for Friday, August 20th
 - River Authority engineers will determine site feasibility
 - If sites deemed feasible, Watershed and Park Operations staff will assess access



- Site selection criteria:
 - Proximity to SPC confluence
 - Provide *unique* habitat opportunities
 - Target intolerant or notable species



Proposed Sites



- Sites not chosen in the WSC system in recognition of upcoming restorations
- Proximity to SPC confluence will encourage migration to the WSC system



Proposed Habitat Augmentation

- *Habitat bundles* placed at the end of riffles or kayak chutes
- Preferred habitat for Guadalupe Bass
- Bundles in water >3.5 feet in depth



WSC Biological Surveys



- Surveys will begin in summer/fall 2021
- Progress to all WSC in the next 3-5 years, timeline dependent on restoration activities
- Provide a baseline for post-construction comparison





SAN
PEDRO
CREEK

CULTURE PARK



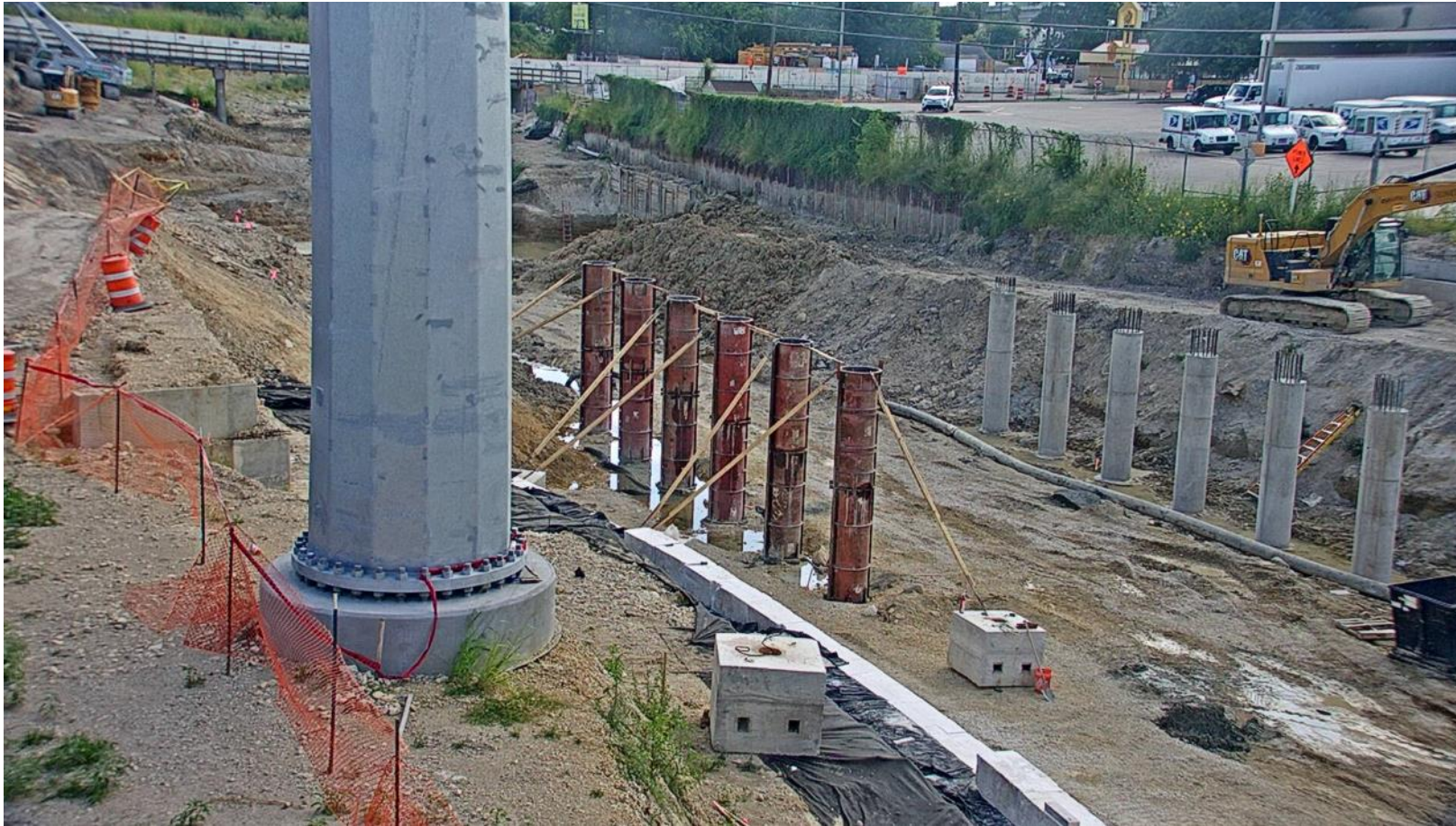
Phase 1.2 Archaeological Site



Phase 1.3 Construction



Phase 2 Construction



Phase 2 Construction



Phase 3 Design



Phase 3 Design



QUESTIONS?





SAN PEDRO CREEK

CULTURE PARK



PHASE 1.1: Creek Lines

- Installation began on July 19 (concrete work)
- Installation of the sculpture will begin later this month and is expected to be complete mid-September
- Project will be featured in upcoming Creekside Chats episode



Phase 1.1: Mural Repair Work

- Started Monday, August 16
- Work performed by Vault Fine Art Services LLC
- Mural tiles (Lopez) to be replaced at a later date



PHASE 1.2: Five Panel Mural

- Artist team and design concept was unanimously approved by Bexar County Commissioners Court on July 13, 2021
 - Kathy and Lionel Sosa with Dr. Ellen Clark, Dr. Jennifer Speed, Dr. Carey Latimore, and John Phillip Santos
- Design development process underway; Focus Group met August 5/6
- Artwork to be fabricated by Tile Artisans Digital Imaging LLC
- Artwork will include a virtual reality component
- Installation is scheduled to occur December 2021 – March 2022



QUESTIONS?

