

WESTSIDE CREEKS RESTORATION OVERSIGHT COMMITTEE QUARTERLY MEETING



CITY OF SAN ANTONIO
PARKS & RECREATION

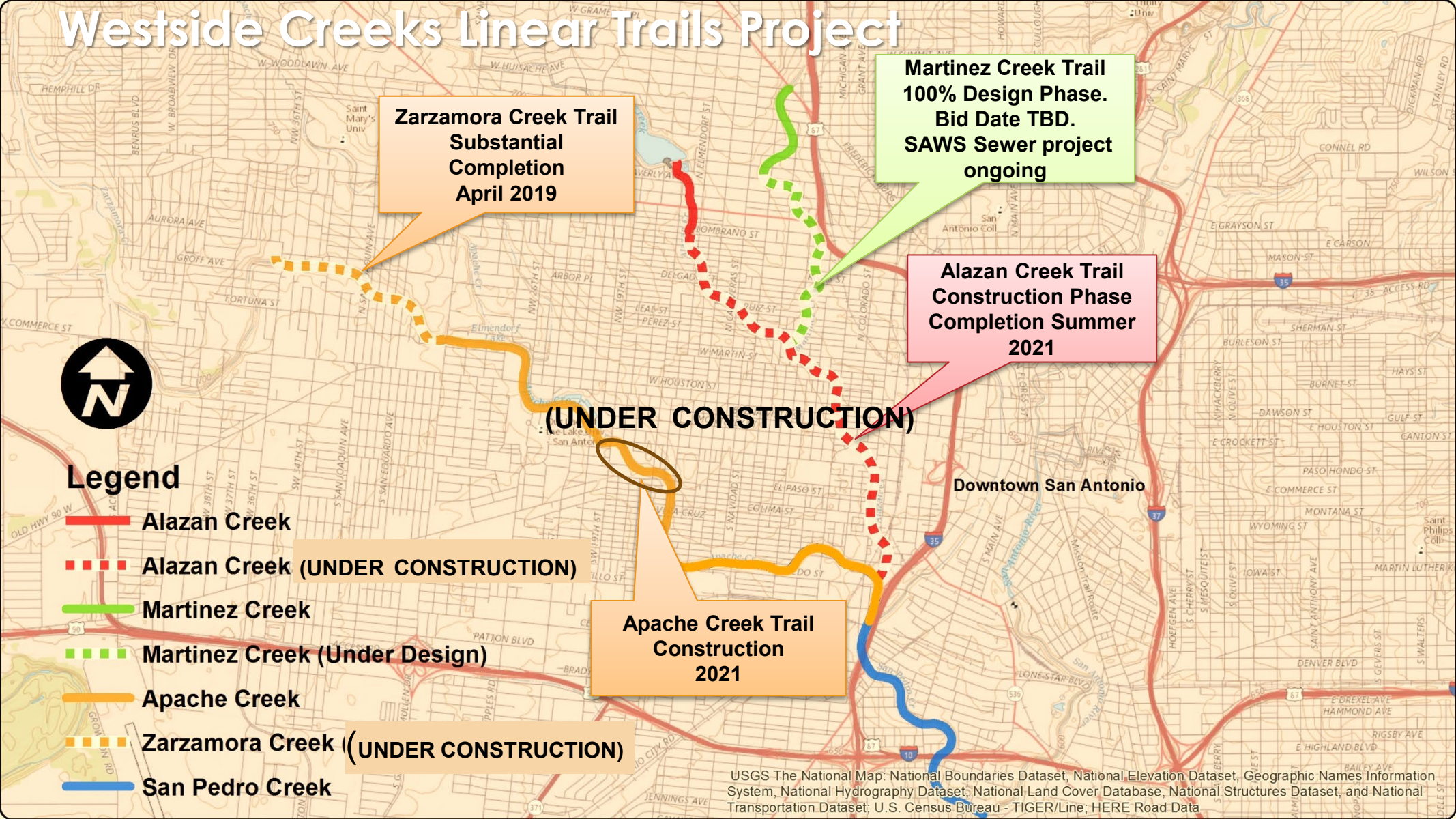


SAN ANTONIO
RIVER AUTHORITY

LINEAR CREEKWAY TRAILS

Reuben Bazan, Richard De La Cruz, P.E., Meera Keshav
February 16, 2021

Westside Creeks Linear Trails Project



APACHE CREEK TRAIL

Apache Creek Trail



APACHE CREEK TRAIL

TRAIL DETAILS

- **Joint Bid contract between SAWS and CoSA. SARA Managing hike and bike trail and park amenities.**
- **Trail connects to existing trails between Elmendorf lake and Cassiano park.**
- **Project amenities to include shade structure, tables & benches, trash receptacles, drinking fountain, signage and ADA parking**
- **Conducted a walk-thru in Dec 2020, project failed TDLR inspection along with other punch items. Contractor is currently repairing the ADA issues identified.**
- **Estimated completion of all repairs is estimated at six months.**



CITY OF SAN ANTONIO
PARKS & RECREATION



SAN ANTONIO
RIVER AUTHORITY



APACHE CREEK TRAIL

CONSTRUCTION PHASE – OSCAR RENDA



CITY OF SAN ANTONIO
PARKS & RECREATION



SAN ANTONIO
RIVER AUTHORITY



APACHE CREEK TRAIL

CONSTRUCTION PHASE – OSCAR RENDA



ZARZAMORA CREEK TRAIL

TRAIL DETAILS

- **Phase I – Approx. 1.0 Miles long – 10' wide concrete hike & bike trail from Knoke St. to Memorial St.**
- **Phase II – Approx. 0.45 miles long – 10' wide concrete hike & bike trail from Memorial St. to Alderete Park (add alternate)**
- **8 overall trail street connections**
- **Trailheads at the pedestrian bridge at 29th Street, San Ignacio and Alderete Park.**
- **Park amenities to include shade structures, drinking fountains, benches, signage, trash receptacles and solar lights at trailheads.**



CITY OF SAN ANTONIO
PARKS & RECREATION



SAN ANTONIO
RIVER AUTHORITY



ZARZAMORA CREEK TRAIL

CONSTRUCTION PHASE – CONTRACTOR RCO, LLC

- **Concrete trail continuous between Aldrete Park and Gen McMullen with exception of creek crossing and SAWS conflict at San Felipe**
- **Placed seeding on west end of project, landscape on hold due to theft.**
- **Construction of the San Ignacio trail head**
- **Drill piers and abutments installed and curing for the pedestrian bridge. Bridge will arrive onsite on March 5.**
- **Currently working on trail and creek crossing at San Felipe and east of Gen McMullen.**
- **Substantial completion scheduled for April 2021.**



CITY OF SAN ANTONIO
PARKS & RECREATION



SAN ANTONIO
RIVER AUTHORITY



ZARZAMORA CREEK TRAIL

CONSTRUCTION PHASE – CONTRACTOR RCO, LLC



CITY OF SAN ANTONIO
PARKS & RECREATION



SAN ANTONIO
RIVER AUTHORITY



ZARZAMORA CREEK TRAIL

CONSTRUCTION PHASE – CONTRACTOR RCO, LLC



CITY OF SAN ANTONIO
PARKS & RECREATION



SAN ANTONIO
RIVER AUTHORITY



ALAZAN CREEK TRAIL - PROJECT LOCATION



Alazan Creek Trail
2.90 miles long
10' wide hike & bike trail

ALAZAN CREEK TRAIL

TRAIL DETAILS

- **2.9 mile long – 10' wide concrete hike & bike trail from Lombrano St. to confluence at Apache creek**
- **5 total street connections (Lombrano, Poplar, Guadalupe, Arbor Pl, Colorado St.)**
- **Connects to Existing trail at Woodlawn Lake (North) and Apache Creek confluence (south)**
- **Awarded Contractor – SpawGlass Civil Construction**
- **Construction start date – February 17, 2020**
- **Expected end date Summer 2021**
- **Contract amount - \$8.665.031.33**



ALAZAN CREEK TRAIL

CONSTRUCTION PHASE

- **Excavation occurring up to Colorado St.**
- **New fencing along SAHA apts.**
- **Stone seating wall at Elmendorf/Poplar St. and Arbor Pl.**
- **Retaining wall construction on going**
- **Concrete installation up to Commerce St.**



CITY OF SAN ANTONIO
PARKS & RECREATION



SAN ANTONIO
RIVER AUTHORITY



ALAZAN CREEK TRAIL

TRAIL PHOTOS



Elmendorf/ Poplar St



Arbor Pl

ALAZAN CREEK TRAIL

TRAIL PHOTOS



Zarzamora St upstream



Zarzamora St downstream

ALAZAN CREEK TRAIL

TRAIL PHOTOS



Farias Park



San Jacinto St.

ALAZAN CREEK TRAIL

TRAIL PHOTOS



Las Moras St



Commerce St upstream

ALAZAN CREEK TRAIL

TRAIL PHOTOS



Buena Vista St upstream



Colorado St

MARTINEZ CREEK TRAIL

DESIGN PHASE

- 1.45 miles long – 10' concrete hike & bike trail
- Ties to existing trail at Cincinnati (north) and Farias Park (south)
- 8 proposed street connections
- SAWS sanitary sewer replacement project due for completion Jan 2021.

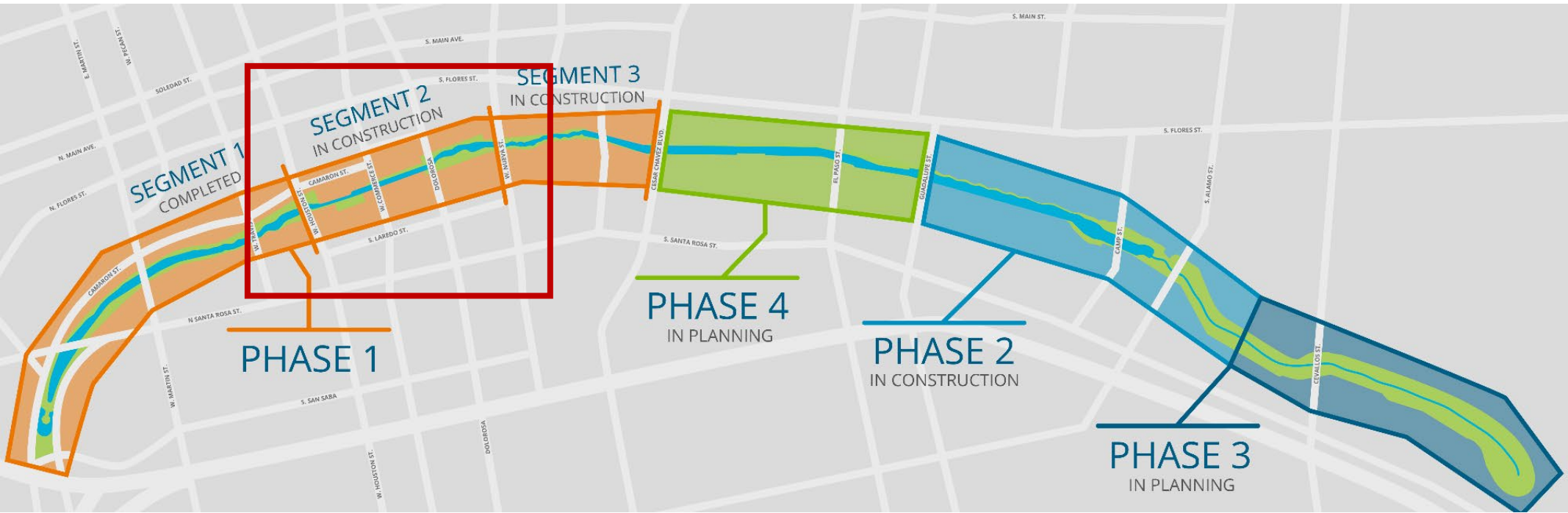


SAN
PEDRO
CREEK
CULTURE PARK

November 17, 2020



Phase 1.2 Construction



Archaeological Site

- Archaeological Site Public Notice through March 8th
- Second public meeting Feb. 16th
- USACE sending us the comments they receive so we can post on the website

TUESDAY
FEBRUARY 16
2021
6:00 P.M.

To access the Virtual Public Meeting go to:
<https://global.gotomeeting.com/join/154347917>

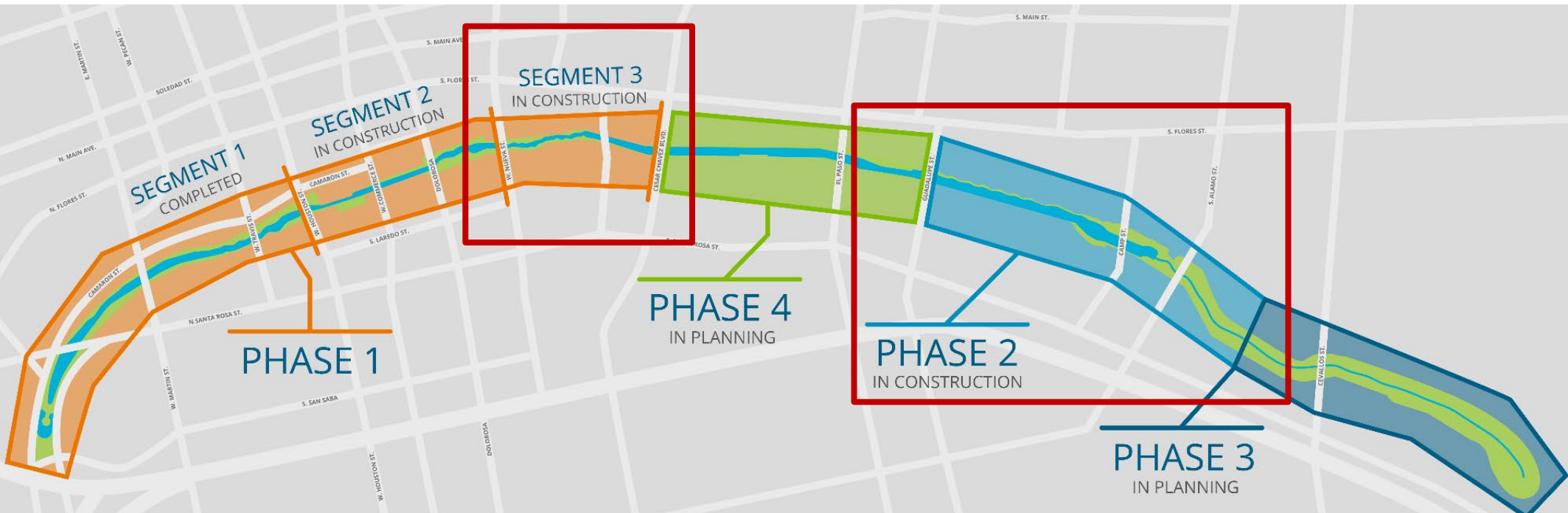
DIAL IN: +1 (646) 749-3122
ACCESS CODE: 154-347-917



For more information, please contact:
Leslie Crippen, U.S. Army Corps of Engineers
DLL-CESWF-SPCIPComments@usace.army.mil **(817) 886-1470**



Phase 1.3 and Phase 2



Phase 1.3 and Phase 2 Construction

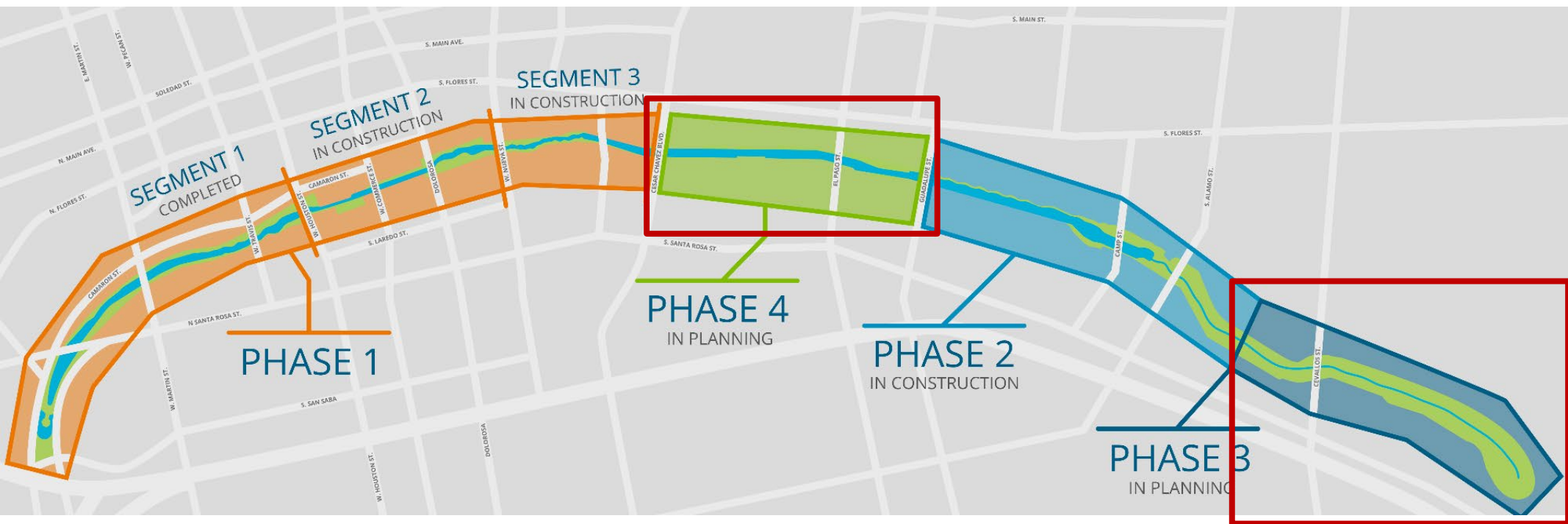
- Ph. 1.3: Nueva to Cesar Chavez
 - Nueva low water crossing columns
 - Nueva Street underground electric and gas work ongoing
- Ph. 2: Guadalupe to RR Bridge
 - Culvert Park slabs
 - Southern half of Alamo bridge moving along quickly; traffic switch expected in April



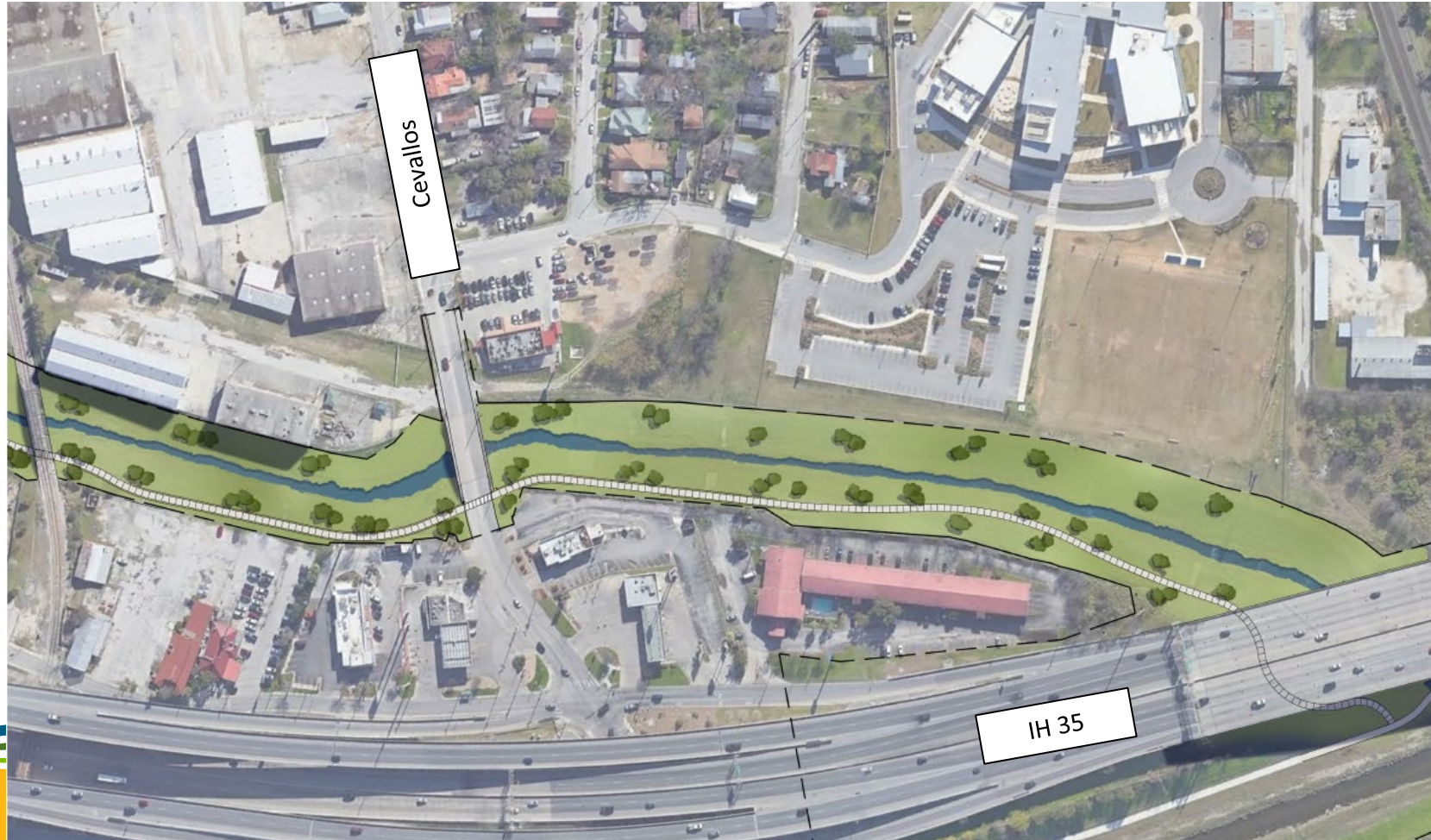
- Street closures:
 - Nueva: Closed
 - Graham: Closed
 - Camp Street: Closed
 - Guadalupe: Closed
 - Alamo: Partially Closed
- Substantial Completion:
 - Phase 1.2: Spring 2022
 - Phase 1.3 & 2: Feb 2023



Phase 3 and Phase 4



Phase 3 Preliminary Layout



Cesar Chavez

El Paso



Public Outreach Efforts

Monica Treviño-Ortega

SARA, Executive Office – Special Projects



Community Engagement Prior to Discovery

- San Pedro Creek Culture Park Interpretive Plan Committee
 - Provided guidance and feedback on the San Pedro Creek Culture Park Interpretive Plan and Interpretive Sign topics executed by Dr. Anne Toxey.
- AME Church Focus Group
 - Initially appointed by Commissioner Tommy Calvert.
 - Consisted of AME Church leadership, historians, and African American community experts to provide additional resources and feedback on the archaeological site.



Interpretive Plan Committee

- Sullora Alcaarez, Zona Cultural
- Dan Arellano, Historian and Bexar County Historical Commission
- Betty Bueche, Bexar County
- Jerry Geyer, San Pedro Creek Subcommittee
- Claudia Guerra, San Antonio Office of Preservation
- David Haynes, Historian
- Kay Hindes, San Antonio Office of Preservation
- Mickey Killian, Bexar County Historical Commission
- Michael W. Lackey, SARA board member
- Dr. Carey Latimore, Trinity University
- Jimmy LeFlore, San Antonio Office of Public Art
- Clinton McKenzie, UTSA Center for Archaeological Research
- Jo Anne Gonzalez Murphy, 1718 San Antonio Founding Families and Descendants
- Maria Pfeiffer, Historian
- Jesus “Corky” Rubio, Los Bexareños and Bexar County Historical Commission
- John Phillip Santos, artist and historian
- Mari Tamez, Canary Island Descendants
- Stella Tenorio-De La Garza, San Antonio Conservation Society
- Tomas Ybarra-Frausto, historian
- Belinda Gavallos, Casa Navarro
- Steve Tillotson, Munoc & Co.



Focus Group

- Dr. Raymond Bryant, St. James AME Church Elder
- Betty Bueche, Bexar Heritage and Parks, Bexar County Historical Commission
- Everett Fly, Architect, Landscape Architect, San Antonio African American Community Archive and Museum
- Gary Houston, Bexar County Historical Commission
- Dr. Cary Latimore, Trinity University, SPC Interpretive Plan Committee
- Clinton McKenzie, UTSA, Bexar County Historical Commission, SPC Interpretive Plan Committee
- Vincent Michael PhD, Executive Director The Conservation Society of San Antonio
- Rev. Alvin Smith, St. James AME Church
- Lon Taylor, Active St. James AME Church leadership, & African American Community Expert
- Johnnie Davis, AME Church



Public Outreach Strategies

- Virtual Public Meetings
- Website Resource Page
- Direct Mail
- Dedicated Email Blasts
- Social Media Promotion
- Media Contacts
- Community Partners



For more information regarding
Archaeological Site 41BX2359 at San
Pedro Creek Culture Park, please visit:

[WWW.SPCCULTUREPARK.COM/THE-PROJECT/
ARCHAEOLOGICAL-SITE-41BX2359](http://WWW.SPCCULTUREPARK.COM/THE-PROJECT/ARCHAEOLOGICAL-SITE-41BX2359)

If you do not have access to the internet and inquire more
information, please call Monica Trevino-Ortega with the
San Antonio River Authority at 210-302-3257.



Points of Contact

- Send all comments to:

U.S. Army Corps of Engineers

Attn: Leslie Crippen

819 Taylor Street

Room 3A12

Fort Worth, TX 76102

Email: DLL-CESWF-SPCIPComments@usace.army.mil

- For questions about access to information or requests for printed copies:

Monica Treviño-Ortega, San Antonio River Authority

mtrevino-ortega@sariverauthority.org



QUESTIONS & COMMENTS





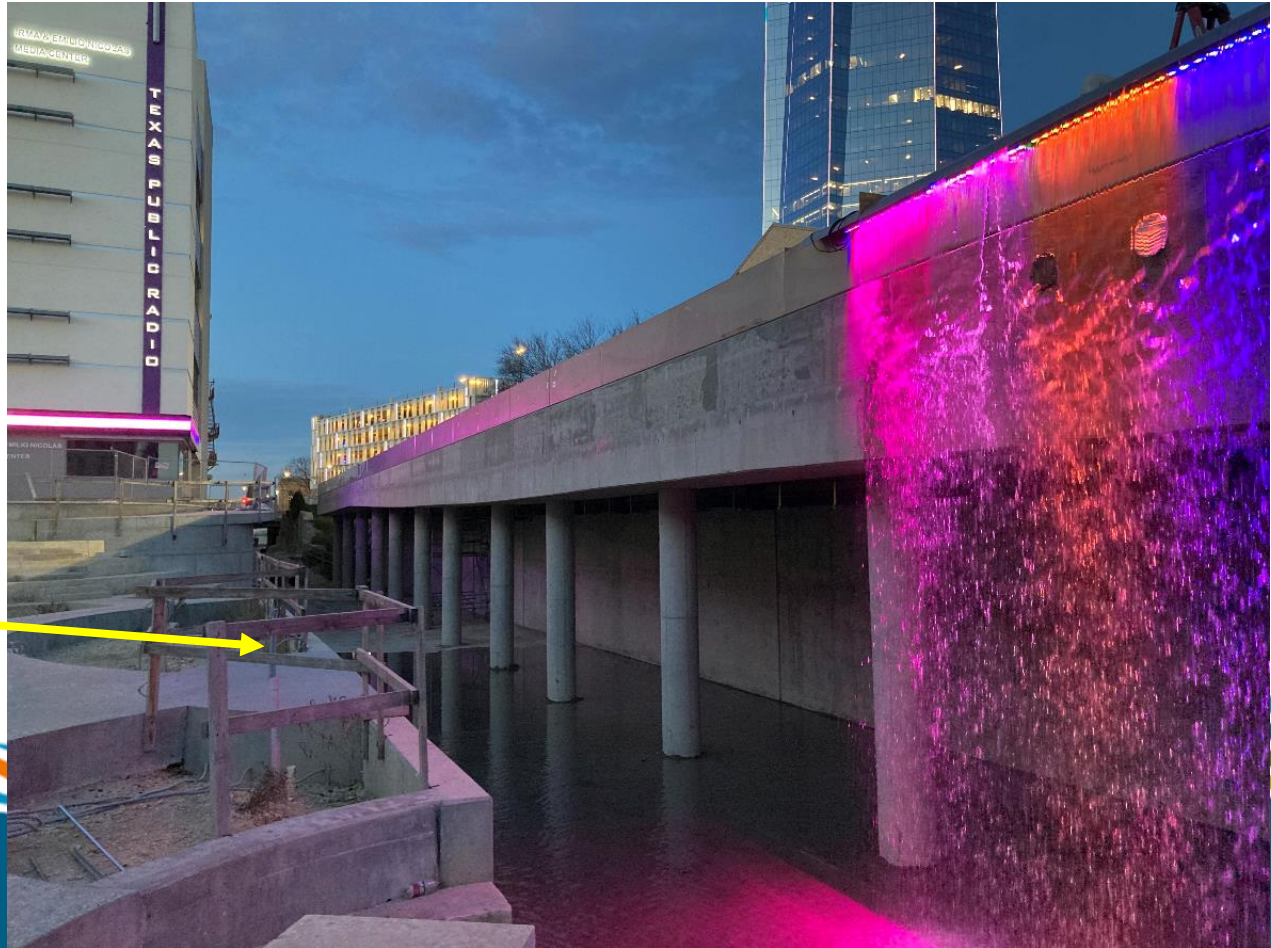
SAN
PEDRO
CREEK
CULTURE PARK



PHASE 1.2: *Stream* by Adam Frank

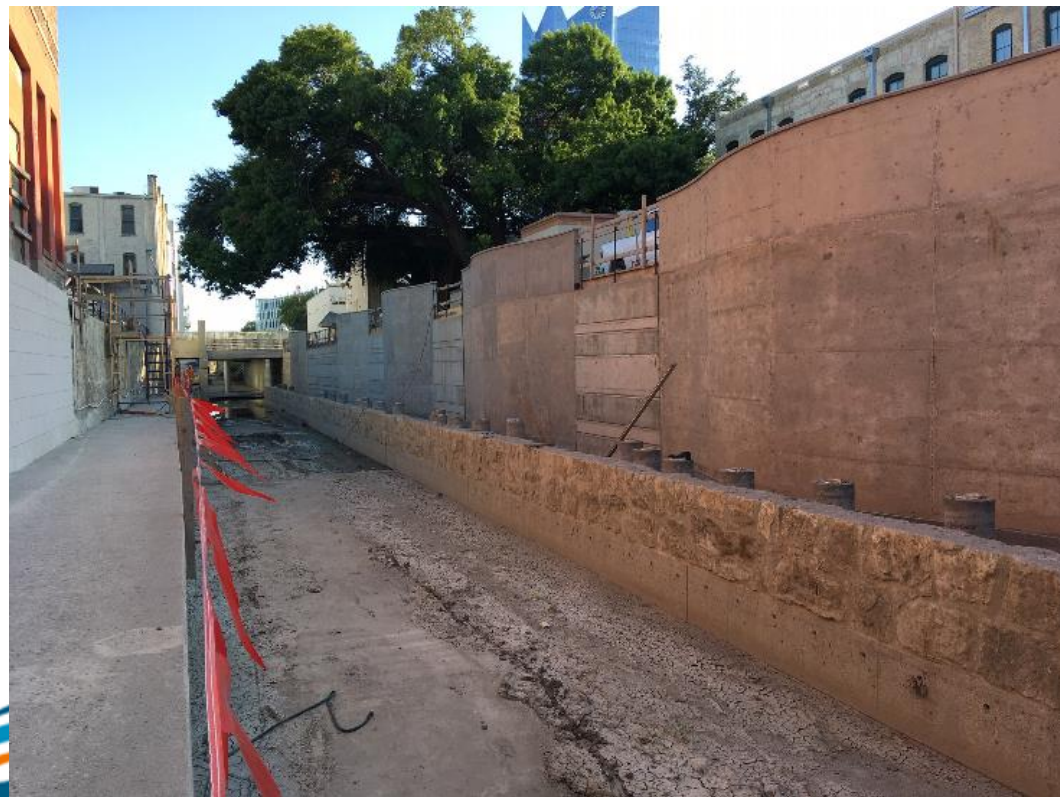
- Water Wall mockup on February 2, have solution to achieve desired effect
- Light coordination with area stakeholders

Microphone
location



PHASE 1.2: Five Panel Mural

- Request for Qualifications drafted, presentation to River Authority BOD February 17
- Professional artists residing in Bexar County are eligible; must apply as a team
- Artist team under contract est. May



PHASE 1.1: Temporary Artwork

COMING SOON!

- Budgets up to \$2,500; up to 4 projects selected
- Professional artists residing in Bexar County are eligible to apply
- Installed throughout the year; schedule depending on projects selected



Upcoming Events (virtual)

- Through June 30: Monday Night Yoga
- February 17: Creekside Chats (John Mize, FPC)
- March 13: Fit & Flow (YMCA of San Antonio)
- March 20-21: World Water Day (scavenger hunt with SARF)
- April 24: Get Creative (TBD)



Welcome Taylor Galvan!

- First ever Public Art Intern
- Brings event planning and art education experience
- Resident artist at Clamp Light Artist Studio and Gallery
- Assisting with all aspects of SPC Art Program



QUESTIONS?

