

Community | A Commitment To
Creativity | Culture

unfolding lives through art

say sí

WEST SIDE CAMPUS

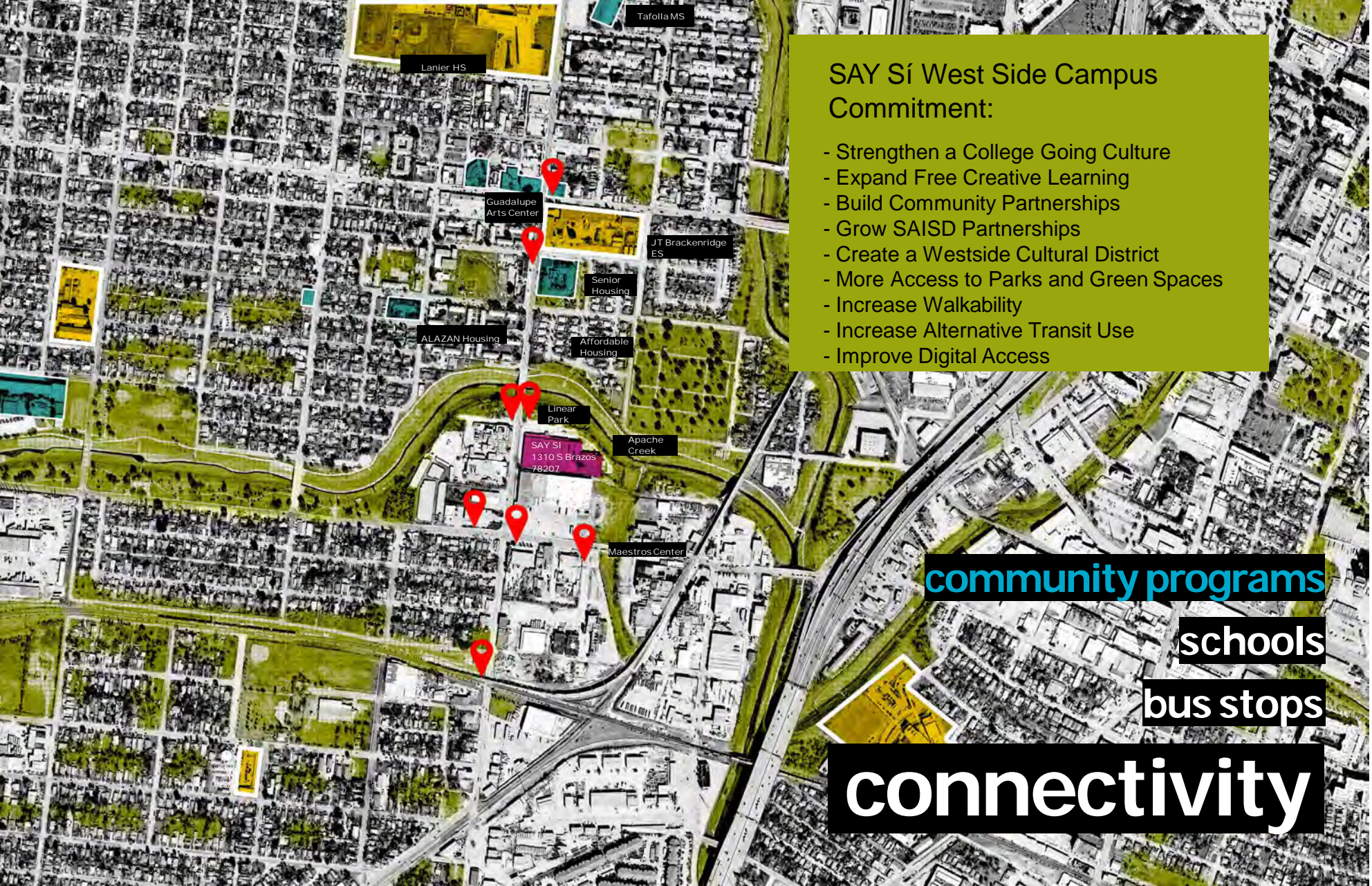
1310 South Brazos San Antonio, TX 78207

Tax Increment Reinvestment Zone
Opportunity Zone

Architects: Gensler
StructureTone

Landscape: MP Studio Contractor:

Conceptual Plans as of 07/01/2019 - Subject to Change



SAY Sí West Side Campus Commitment:

- Strengthen a College Going Culture
- Expand Free Creative Learning
- Build Community Partnerships
- Grow SAISD Partnerships
- Create a Westside Cultural District
- More Access to Parks and Green Spaces
- Increase Walkability
- Increase Alternative Transit Use
- Improve Digital Access

community programs

schools

bus stops

connectivity

NORTH VIEW



CONCEPT DESIGN | DECEMBER 2018

LAKE | FLATO | SAY SI RELOCATION

1 ORIGINAL BUILDING VIEW

Ariel View from Apache Creek



Gensler



Main Entrance

Gensler



sept ember 30, 2019

say si
siteplan

MP
STUDIO











SAY Sí West Side Campus

Move in Date: Late Fall 2020
20 Million Dollar Reinvest

Opportunities for
New market Tax Credits
Historic Tax Credits
TIRZ Funds
Infrastructure Funds

Private Support to include Foundations, Corporations and Individuals



SAY SI Track Record of Success

100% High School Graduation and 100% College Placement

The SAY Sí Class of 2019 has been offered over 3.2 Million dollars in scholarships and Aid and have been accepted into over 100 colleges and universities including UT Austin, NYU, Columbia, MIT, Vassar, Oberlin, Texas A&M, Harvard, Bard, The School of the Art Institute of Chicago and Savannah College of Art and Design.

For additional information please email
Jon Hinojosa, Artistic/Executive Director
jon@saysi.org
210-212-8666
saysi.org

WESTSIDE CREEKS RESTORATION OVERSIGHT COMMITTEE QUARTERLY MEETING



CITY OF SAN ANTONIO
PARKS & RECREATION



SAN ANTONIO
RIVER AUTHORITY

LINEAR CREEKWAY TRAILS







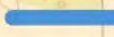
Reuben Bazan, Richard De La Cruz, P.E., Hillary Lilly

May 19, 2020

Westside Creeks Linear Trails Project



Legend

-  Alazan Creek
-  Alazan Creek (Under Design)
-  Martinez Creek
-  Martinez Creek (Under Design)
-  Apache Creek
-  Zarzamora Creek (Under Design)
-  San Pedro Creek

Zarzamora Creek Trail
Construction Phase
Fall 2019

Elmendorf Pool
100% Construction

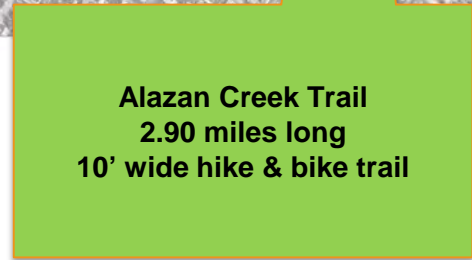
SAWS
Construction

Apache Creek Trail
Terra Design Group
Construction

Martinez Creek Trail
100% Design Phase.
Bid Date TBD.
SAWS Sewer project
ongoing

Alazan Creek Trail
Construction Phase
Spring 2020

Downtown San Antonio



ALAZAN CREEK TRAIL

TRAIL DETAILS

- **2.9 mile long – 10' wide concrete hike & bike trail from Lombrano St. to confluence at Apache creek**
- **5 total street connections (Lombrano, Poplar, Guadalupe, Arbor Pl, Colorado St.)**
- **Connects to Existing trail at Woodlawn Lake (North) and Apache Creek confluence (south)**
- **Awarded Contractor – SpawGlass Civil Construction**
- **Construction start date – February 17, 2020**
- **Expected end date Summer 2021**
- **Contract amount - \$8.665.031.33**



CITY OF SAN ANTONIO
PARKS & RECREATION



SAN ANTONIO
RIVER AUTHORITY



ALAZAN CREEK TRAIL

CONSTRUCTION PHASE

- **Excavation occurring up to station 30+00 (Ruiz St.)**
- **Concrete forms constructed up to station 25+00 (Zarzamora St.)**
- **Concrete installation up to station 22+00 (Delgado St.)**

ALAZAN CREEK TRAIL

TRAIL PHOTOS



ALAZAN CREEK TRAIL

TRAIL PHOTOS



MARTINEZ CREEK TRAIL

DESIGN PHASE

- **Design Completed April 2019**
- **1.45 miles long – 10' concrete hike & bike trail**
- **Ties to existing trail at Cincinnati (north) and Farias Park (south)**
- **8 proposed street connections**
- **Bidding on hold due to SAWS sanitary sewer replacement project under construction along same creek areas.**

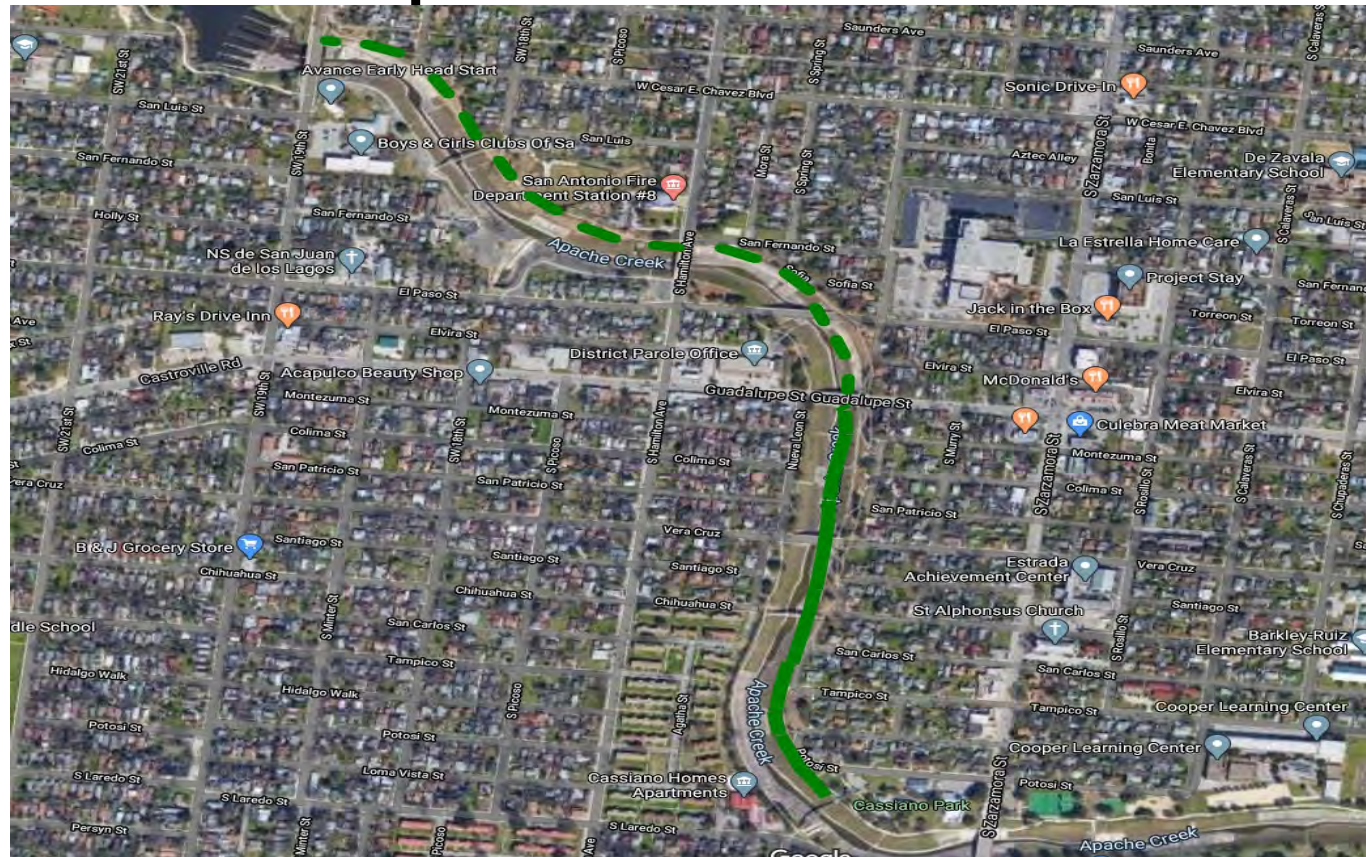
APACHE CREEK TRAIL

Apache Creek Trail



APACHE CREEK TRAIL

Apache Creek Trail



CITY OF SAN ANTONIO
PARKS & RECREATION



SAN ANTONIO
RIVER AUTHORITY



APACHE CREEK TRAIL

CONSTRUCTION PHASE – OSCAR RENDA



APACHE CREEK TRAIL

TRAIL DETAILS

- **Joint Bid contract between SAWS and CoSA. SARA Managing hike and bike trail and park amenities.**
- **Trail connects to existing trails between Elmendorf lake and Cassiano park.**
- **Approximately 35% of trail has been placed**
- **Contractor is behind schedule**
- **Expected completion Summer 2020**



CITY OF SAN ANTONIO
PARKS & RECREATION



SAN ANTONIO
RIVER AUTHORITY



ZARZAMORA CREEK TRAIL

TRAIL DETAILS

- **Phase I – Approx. 1.0 Miles long – 10' wide concrete hike & bike trail from Knoke St. to Memorial St.**
- **Phase II – Approx. 0.45 miles long – 10' wide concrete hike & bike trail from Memorial St. to Alderete Park (add alternate)**
- **8 overall trail street connections**
- **Bridge at 29th Street**
- **San Ignacio Trailhead**



CITY OF SAN ANTONIO
PARKS & RECREATION



SAN ANTONIO
RIVER AUTHORITY



ZARZAMORA CREEK TRAIL

CONSTRUCTION PHASE – CONTRACTOR RCO, LLC

- Starting construction at Alderete Park Sta
- Concrete trails and retaining wall continuing east to 34th ST.
- Stormwater protection fencing being installed
- Preliminary grading started
- Concrete outfall structure demolition started
- Contract amount - \$3,622,870.70



CITY OF SAN ANTONIO
PARKS & RECREATION

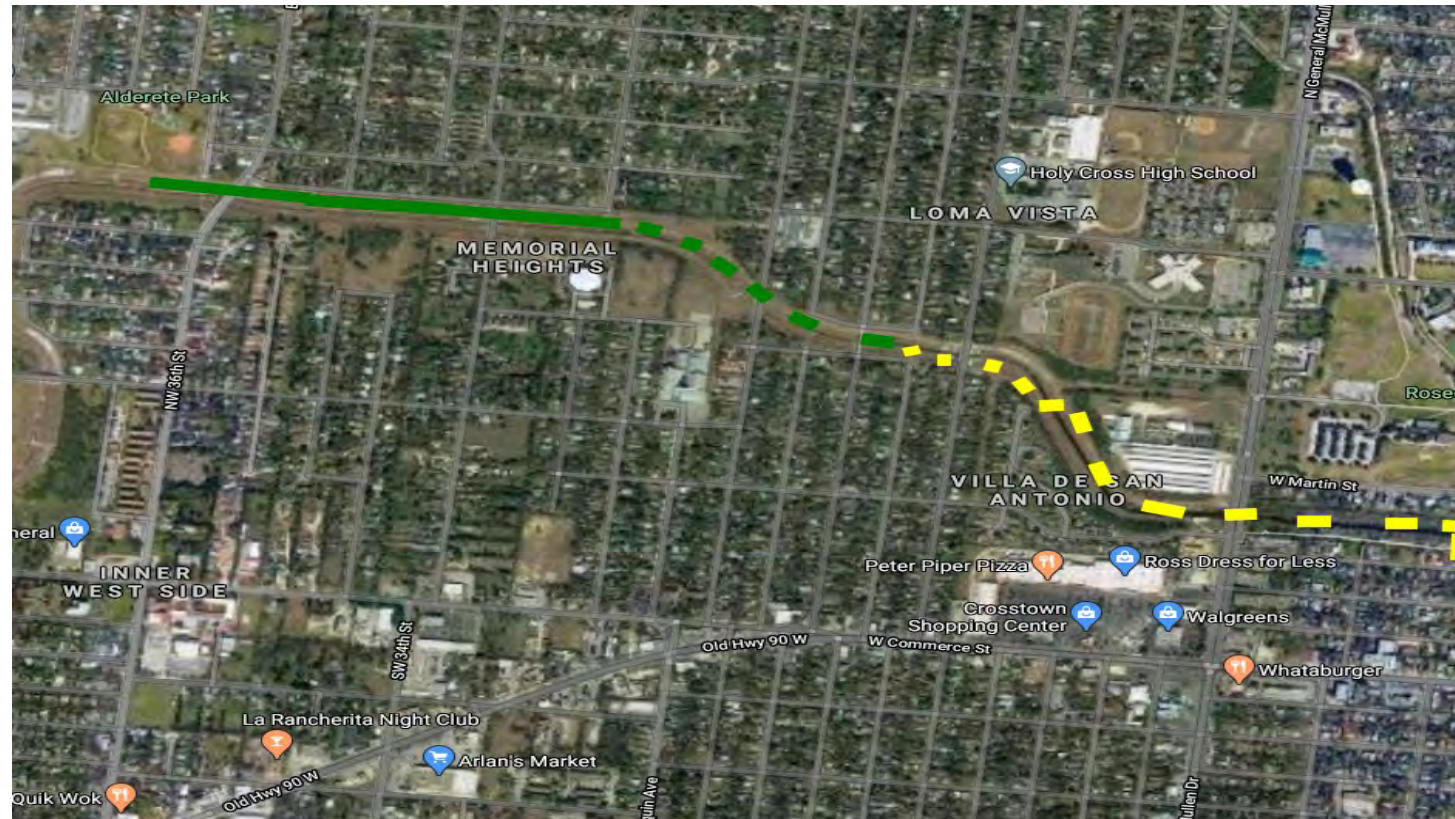


SAN ANTONIO
RIVER AUTHORITY



ZARZAMORA CREEK TRAIL

Zarzamora Creek Trail



CITY OF SAN ANTONIO
PARKS & RECREATION



SAN ANTONIO
RIVER AUTHORITY



ZARZAMORA CREEK TRAIL

CONSTRUCTION PHASE – CONTRACTOR RCO, LLC



CITY OF SAN ANTONIO
PARKS & RECREATION



SAN ANTONIO
RIVER AUTHORITY



ZARZAMORA CREEK TRAIL

CONSTRUCTION PHASE – CONTRACTOR RCO, LLC



CITY OF SAN ANTONIO
PARKS & RECREATION



SAN ANTONIO
RIVER AUTHORITY



Questions?



CITY OF SAN ANTONIO
PARKS & RECREATION



SAN ANTONIO
RIVER AUTHORITY





SAN
PEDRO
CREEK
CULTURE PARK

May 19, 2020

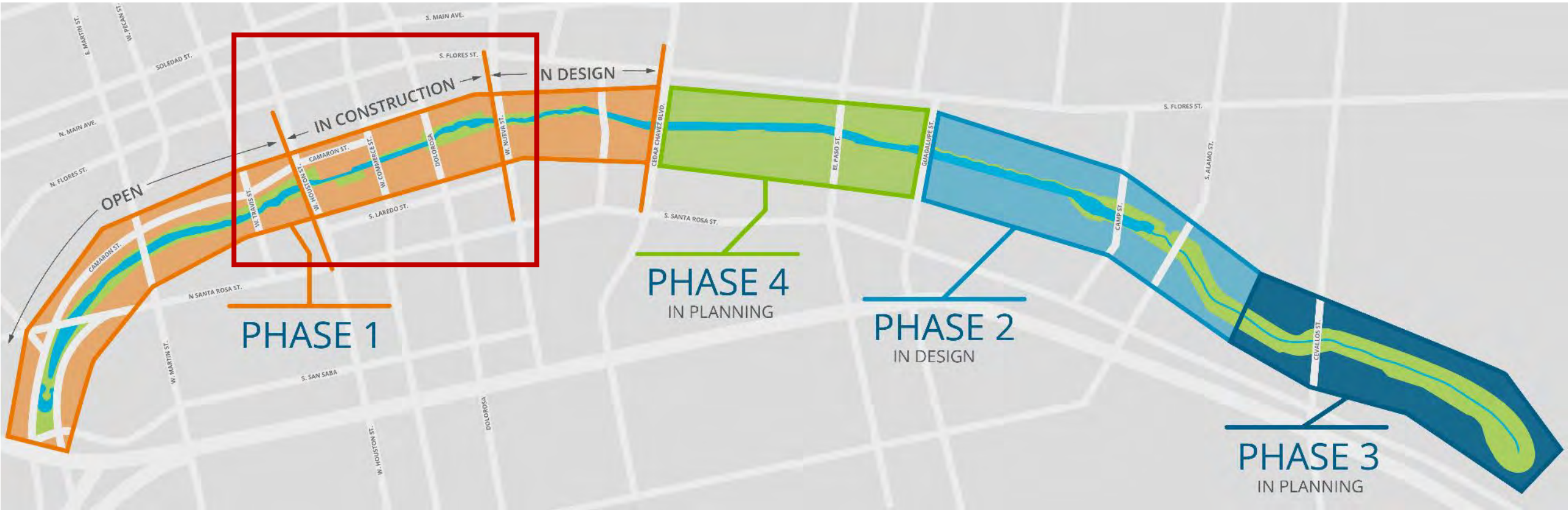


Updates

- Phase 1.2
 - Construction activities
 - Archaeological exploration
- Phases 1.3 and 2
 - Design Activities
 - Construction activities
- Partner Coordination



Phase 1.2 Construction



Phase 1.2 Construction

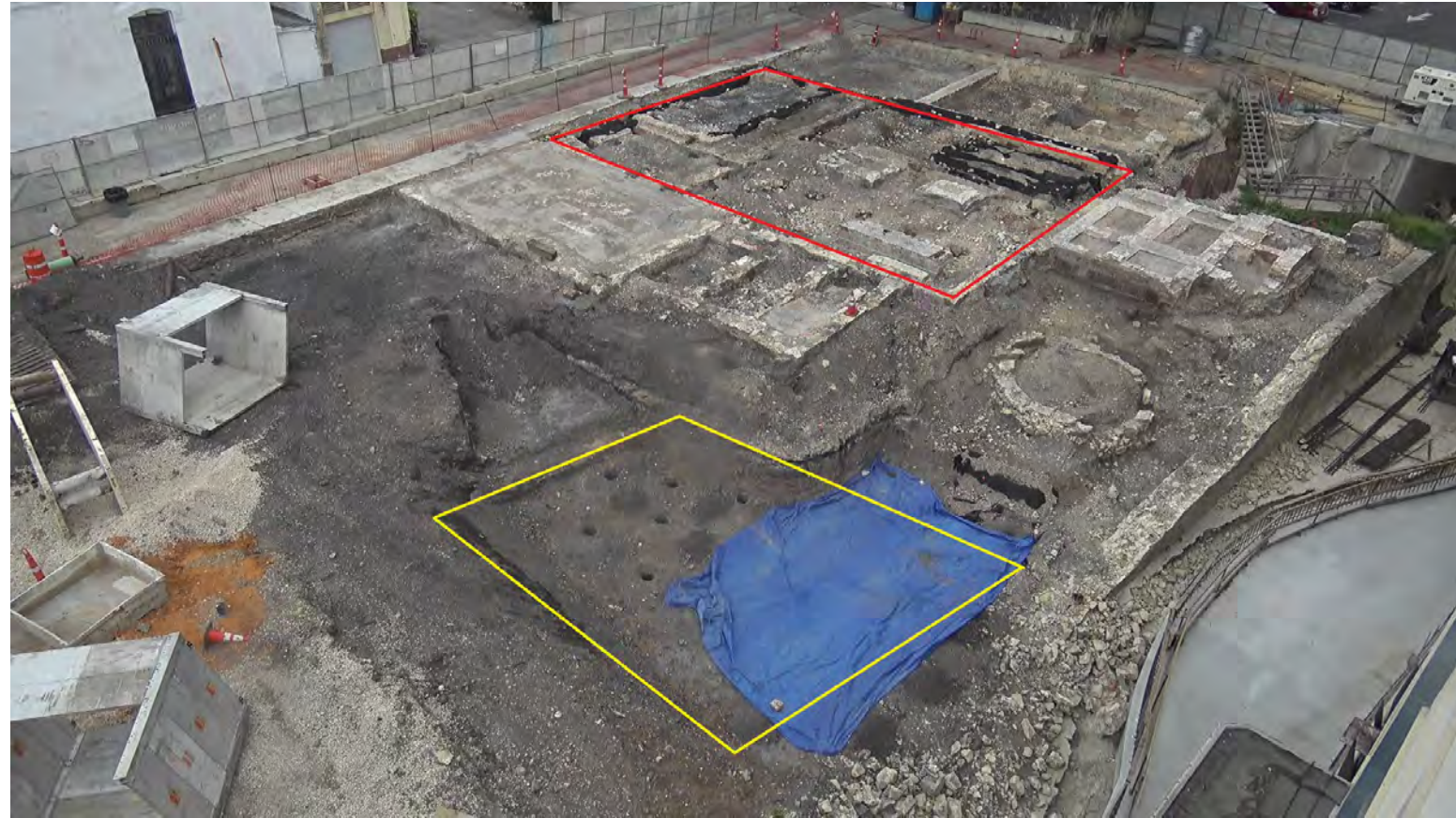
- Houston to Commerce
 - Utility installation
 - Archaeological exploration
- Commerce to Dolorosa
 - Dolorosa street bridge
 - Spanish Governor's Palace wall
- Dolorosa to Nueva
 - Paseo/plaza paving





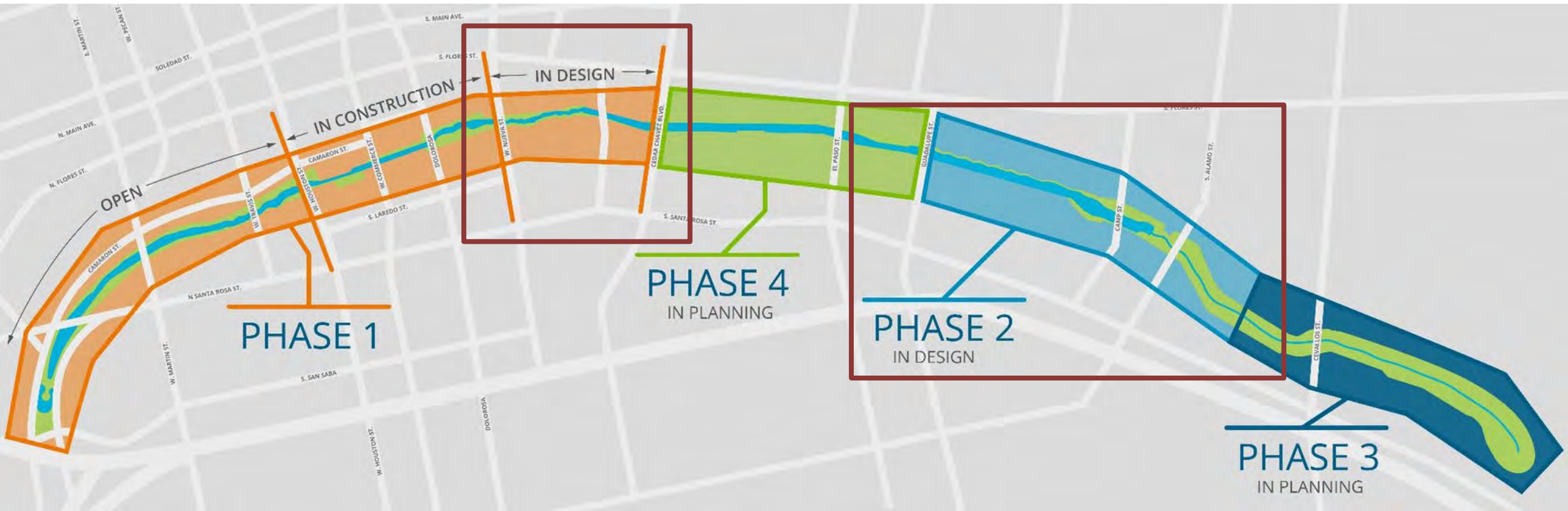
Archaeological Exploration

- Coordination with USACE, THC and COSA OHP ongoing





Phase 1.3 and Phase 2 Design



Phase 1.3 and Phase 2 Design

- Design ongoing
- 90% design submittal May 5
- 100% design submittal July 2020













Phase 1.3 and Phase 2 Construction

- Early Work Package 20: Heavy Civil
 - Construction started in Phase 1.3
- Early Work Package 21: SAWS Relocations
 - SAWS Board approved costs
- Phase 2 construction delayed
 - ROW acquisitions
 - USACE Permit
 - Century Link relocation



Phase 1.3 and Phase 2 Construction

- Street closures:
 - Camp Street: May 18th
 - Guadalupe: June 1st
 - Alamo: Early July
- Substantial Completion:
February 2023



Partner Coordination

- Phases 1 and 2 Coordination ongoing
 - TPR/Alameda
 - Camaron Street
 - Commerce Street
 - GSA/Federal Courthouse
 - TxDOT
 - Linda Pace Foundation/Ruby City
 - UTSA downtown campus expansion
 - SAISD Administration building



Partner Coordination

- Executive Committee
 - David Smith, County Manager, Bexar County
 - Lori Houston, Assistant City Manager, City of San Antonio
 - Razi Hosseini, Director, Public Works, City of San Antonio
 - Suzanne Scott, General Manager, San Antonio River Authority
- Meeting held May 13



QUESTIONS & COMMENTS

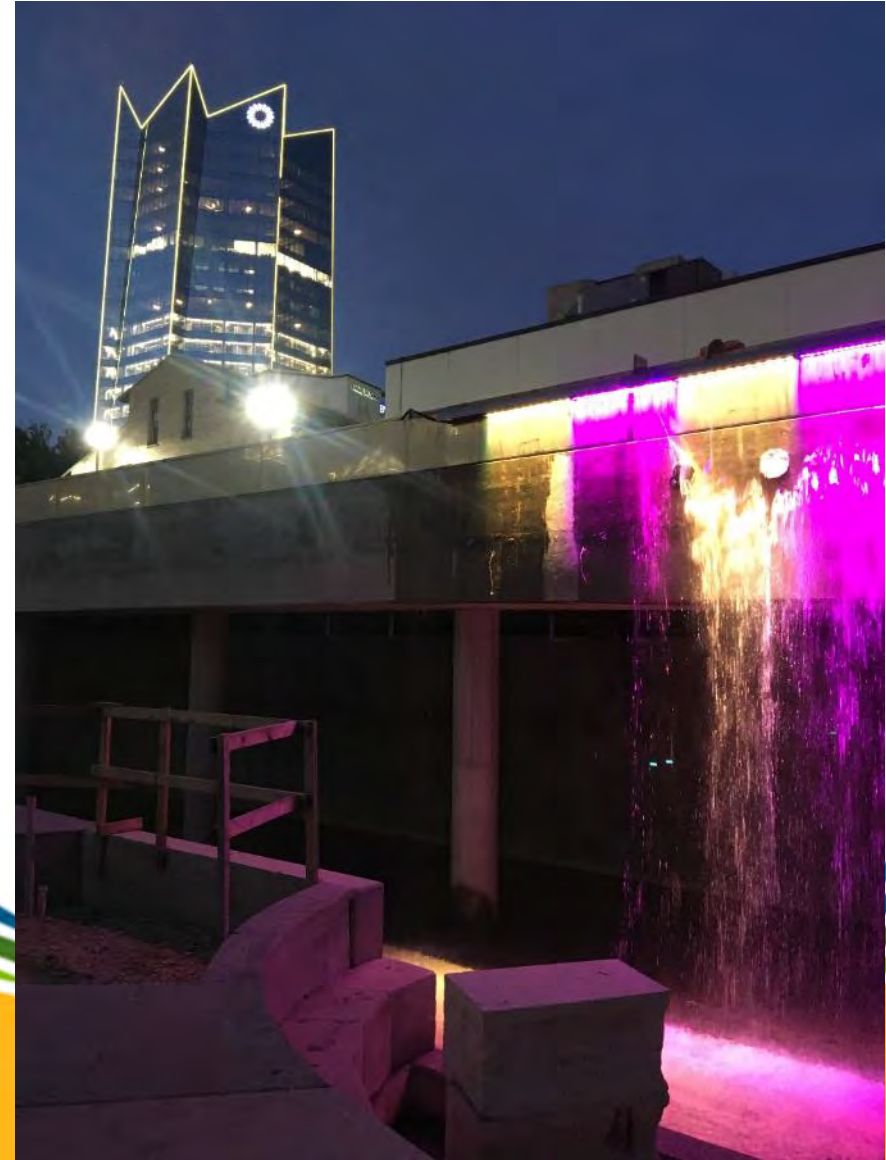
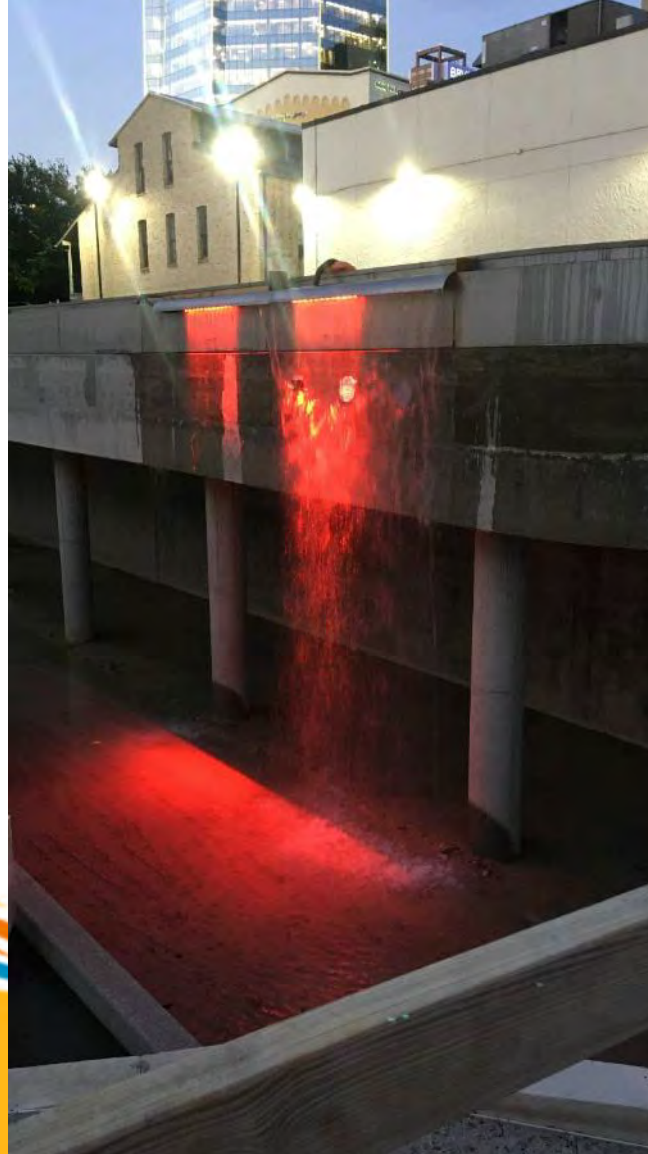




SAN
PEDRO
CREEK
CULTURE PARK



PHASE 1.2: Interactive Water Wall (Stream)



PHASE 1.2: Five Panel Mural

Artist Team:

Carlos Cortes + Fernando
Andrade, Rolando Briseno,
Jenelle Esparza, and Ernesto
Ibanez



PHASE 1.2: Five Panel Mural

Virtual Public Meetings

- Begin late May
- Artwork design complete in July
- Bexar County Commissioners Court approval, tentatively late July
- Fabrication/Installation schedule



INTERPRETIVE PLAN

- Final draft submitted April 28
 - Internal review, final edits for branding
 - Distribution
- Archeological discoveries
 - Houston-Commerce block includes panel for AME church
- Historians Maria Pfeiffer and David Haynes are working on panels for Ph. 1.2



INTERPRETIVE PLAN COMMITTEE

- Sullora Alcarez, Zona Cultural
- Dan Arellano, historian
- Betty Beuche, Bexar County
- Jerry Geyer, San Pedro Creek Subcommittee
- Claudia Guerra, San Antonio Office of Preservation
- David Haynes, historian
- Kay Hindes, San Antonio Office of Preservation
- Mickey Killian, Bexar County Historical Commission
- Michael W. Lackey, SARA board member
- Dr. Cary Latimore, Trinity University
- Jimmy LeFlore, San Antonio Office of Public Art
- Clinton McKenzie, UTSA Center for Archaeological Research
- Jo Anne Gonzalez Murphy, 1718 San Antonio Founding Families and Descendants
- Maria Pfeiffer, historian
- Jesus “Corky” Rubio, Los Bexareños and Bexar County Historical Commission
- John Phillip Santos, artist and historian
- Mari Tamez, Canary Islander Descendants
- Stella Tenorio-De La Garza, San Antonio Conservation Society
- Steve Tilloston, Muñoz & Company
- Tomas Ybarra-Frausto, historian



EVENTS



Virtual workshop
May 20



Virtual classes
through June 30



www.facebook.com/SanPedroCreek

QUESTIONS?

