

Westside Creeks Restoration Oversight Committee Meeting



CITY OF SAN ANTONIO
PARKS & RECREATION



SAN ANTONIO
RIVER AUTHORITY
Leaders in Watershed Solutions

Elmendorf Pool & Linear Creekway Trails

SARA: Reuben Bazan, Richard De La Cruz, P.E., Hillary Lilly

May 21, 2019

Alazan Creek

■ ■ ■ ■ Alazan Creek (Under Design)

Martinez Creek

■ ■ ■ Martinez Creek (Under Design)

Apache Creek

 Zarzamora Creek (Under Design)

San Pedro Creek

**Zarzamora Creek
Trail
Bid Phase
Bid Summer 2019**

Elmendorf Pool
45% Construction

SAWS Construction

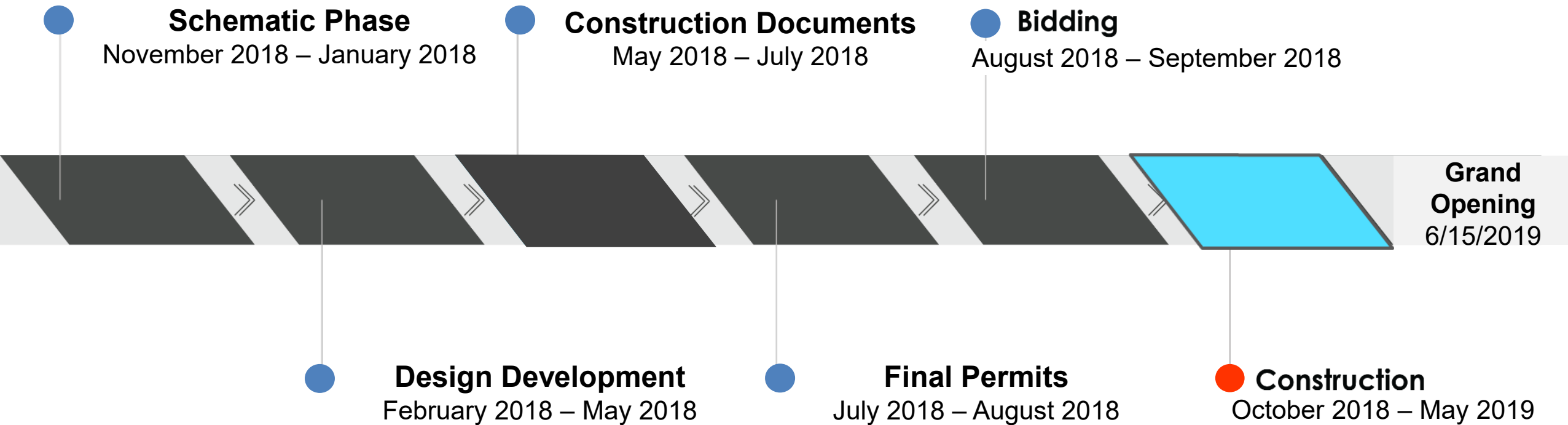
Apache Creek Trail Terra Design Group Construction

**Martinez Creek Trail
100% Design Phase.
Bid Date TBD.
SAWS Sewer project
ongoing**

Alazan Creek Trail 100% Design Phase Bid Summer 2019

USGS The National Map: National Boundaries Dataset, National Elevation Dataset, Geographic Names Information System, National Hydrography Dataset, National Land Cover Database, National Structures Dataset, and National Transportation Dataset; U.S. Census Bureau - TIGER/Line; HERE Road Data

ELMENDORF POOL SCHEDULE



ELMENDORF POOL LAYOUT



ELMENDORF POOL IMPROVEMENTS



- City of San Antonio Funding through the 2017 Bond Program
- Managed by the San Antonio River Authority
- Features a beach entrance in the pool
- Swimming area with three 25m lap lanes
- Pool area 5,068 square feet
- Restrooms with changing stalls
- Seating areas around pool
- Canopies surrounding pool

Elmendorf Lake Park Pool Groundbreaking

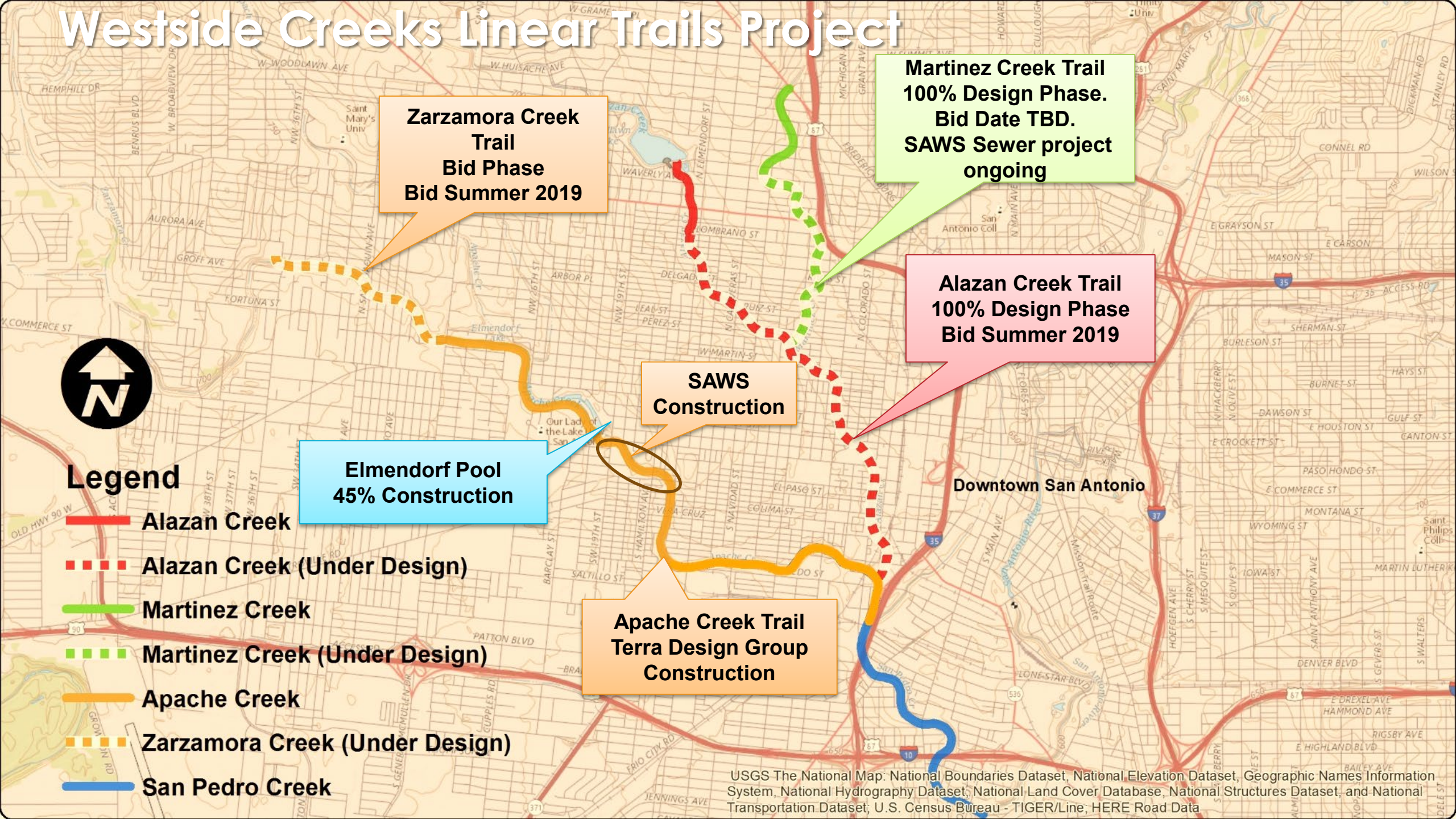
10/27/2018



ELMENDORF POOL PROGRESS PHOTOS



Westside Creeks Linear Trails Project



ZARZAMORA CREEK TRAIL

Zarzamora Creek Trail

Bid received May 17, 2019.
SARA June Board Presentation
Approval for Contractor Recommendation

ZARZAMORA CREEK TRAIL OVERVIEW

TRAIL DETAILS

- **Phase I – Approx. 1.0 Miles long – 10' wide concrete hike & bike trail from 29th Street to Memorial St.**
- **Phase II – Approx. 0.45 miles long – 10' wide concrete hike & bike trail from Memorial St. to Alderete Park (add alternate)**
- **8 Street Connections**
- **Bridge at 29th Street**
- **San Ignacio Trailhead**

ZARZAMORA CREEK

29th STREET

PAPE-DAWSON
ENGINEERS

**FORD
POWELL
& CARSON**
Architects & Planners, Inc.



Ximenes &
Associates, Inc.

ZARZAMORA CREEK @ GEN McMULLEN DR.



SAN IGNACIO TRAILHEAD

ALAZAN CREEK TRAIL

Alazan Creek Trail

**Pending approvals from
Texas Dept of Transportation
Union Pacific**

**Expected SARA June Board Presentation
Approval for Contractor Recommendation**

ALAZAN CREEK TRAIL OVERVIEW

TRAIL DETAILS

- **2.9 mile long – 10' wide concrete hike & bike trail from Lombrano St. to confluence at Apache creek**
- **3 base bid street connections (Lombrano, Poplar, Guadalupe)**
- **4 alternate street connections (Arbor Pl, Colorado, Sabinas, Martin)**
- **Connects to Existing trail at Woodlawn Lake (North) and Apache Creek (south)**
- **Martinez Creek trail ties to Alazan trail at Farias Park**

MARTINEZ CREEK TRAIL

Martinez Creek Trail

Design Completed April 2019

**On Hold for bidding
SAWS Sanitary Sewer Line Replacement Project Construction
Jan 2019 – June 2021**

MARTINEZ CREEK TRAIL OVERVIEW

TRAIL DETAILS

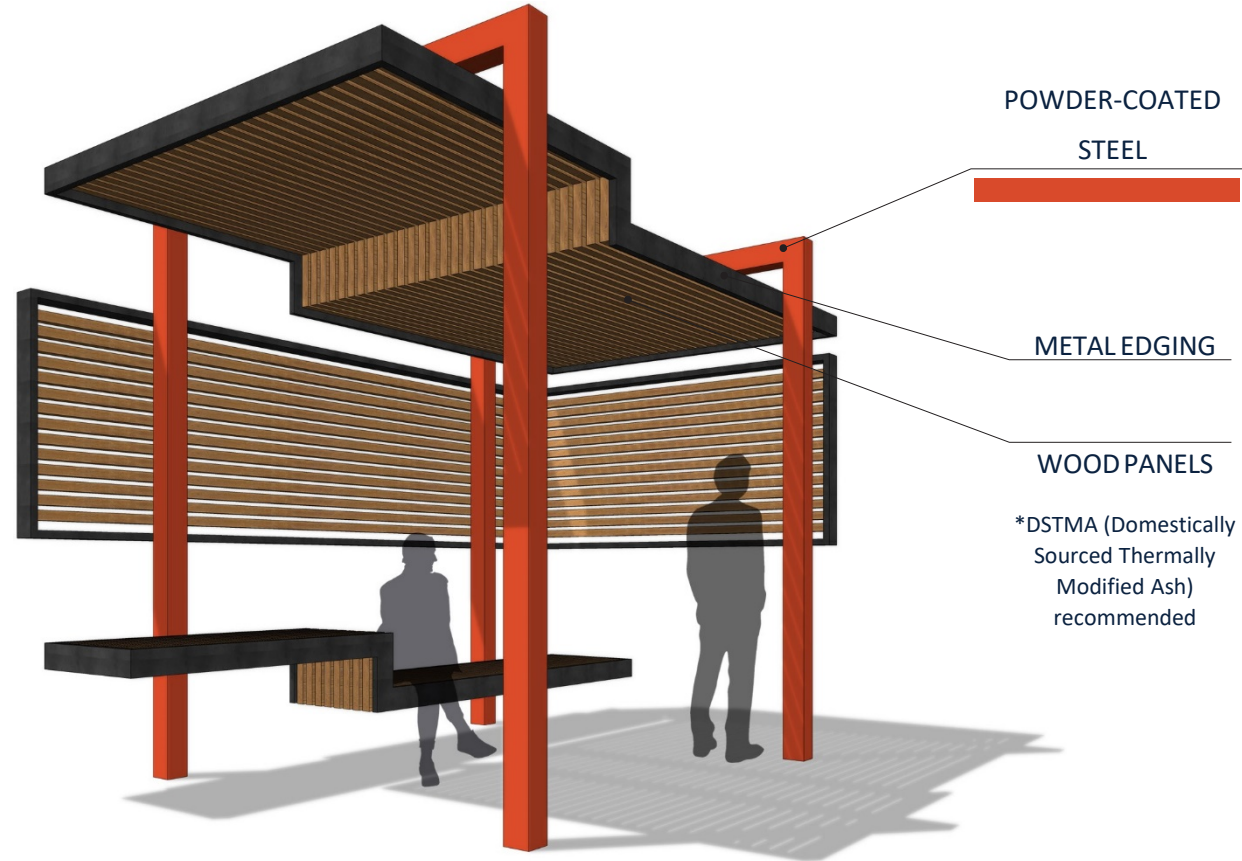
- **1.45 mile long – 10' wide concrete hike & bike trail**
- **Ties to existing trail @ Cincinnati (North) and Alazan Creek at Farias Park (South)**
- **8 Street Connections (4 Trailheads - Add Alternates in bid package.)**
- **Sabinas St. Trailhead**
- **University Ave. St. Connection**

MARTINEZ CREEK TRAIL



**UNIVERSITY AVE CONNECTION
(add alternate)**

TYPICAL SHADE STRUCTURE



City of San Antonio Trail Design Strategy

Questions?





SAN
PEDRO
CREEK
CULTURE PARK

May 21, 2019





Phase 1.1 Remaining Items

- Additional railing at Travis Gatehouse
 - Installation completed
- Inlet lighting
 - Installation completed
- Trash screen at inlet pump station
 - Work postponed until late 2019
- Santa Rosa Pedestrian Crossing
 - Installation completed



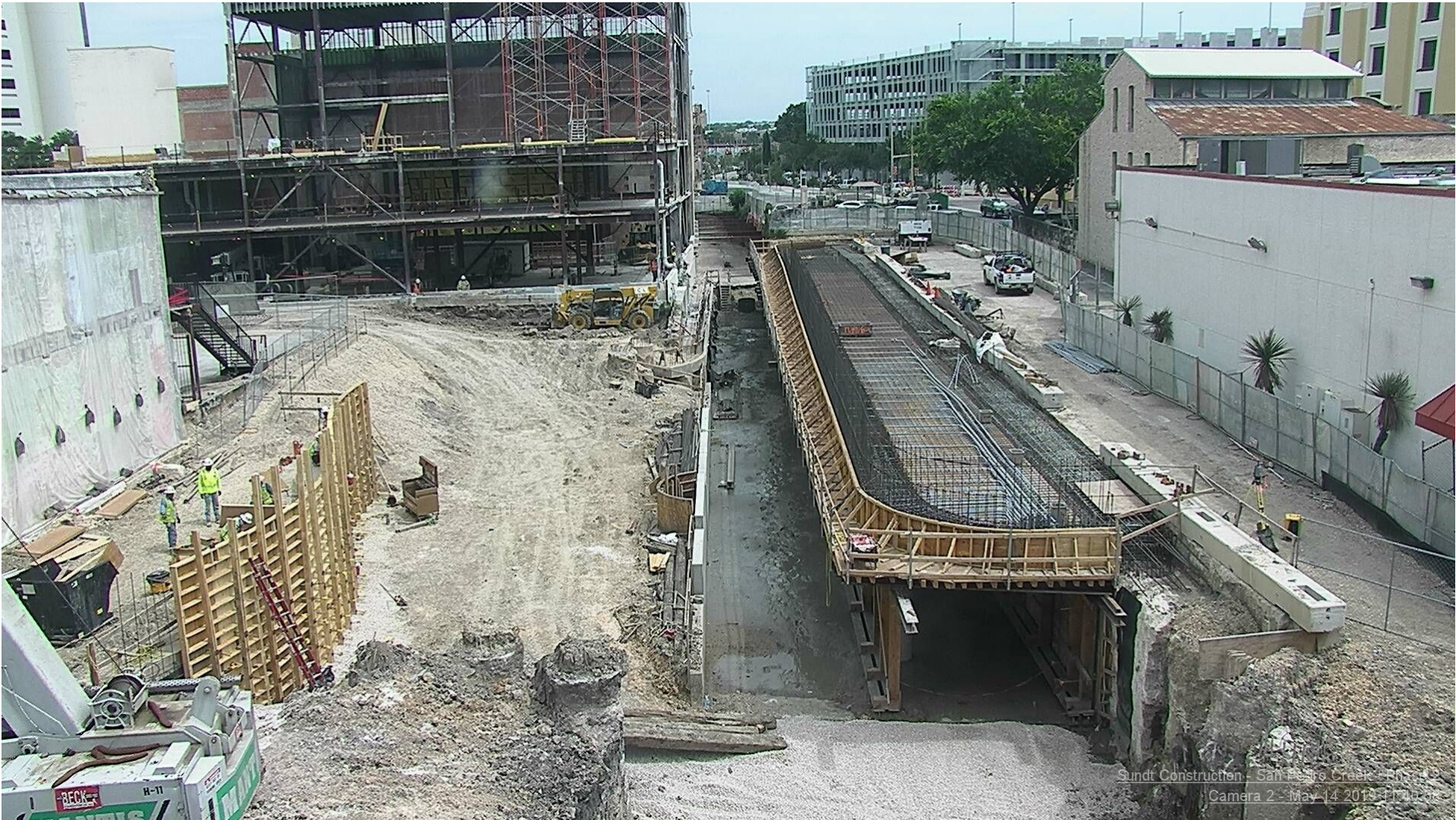




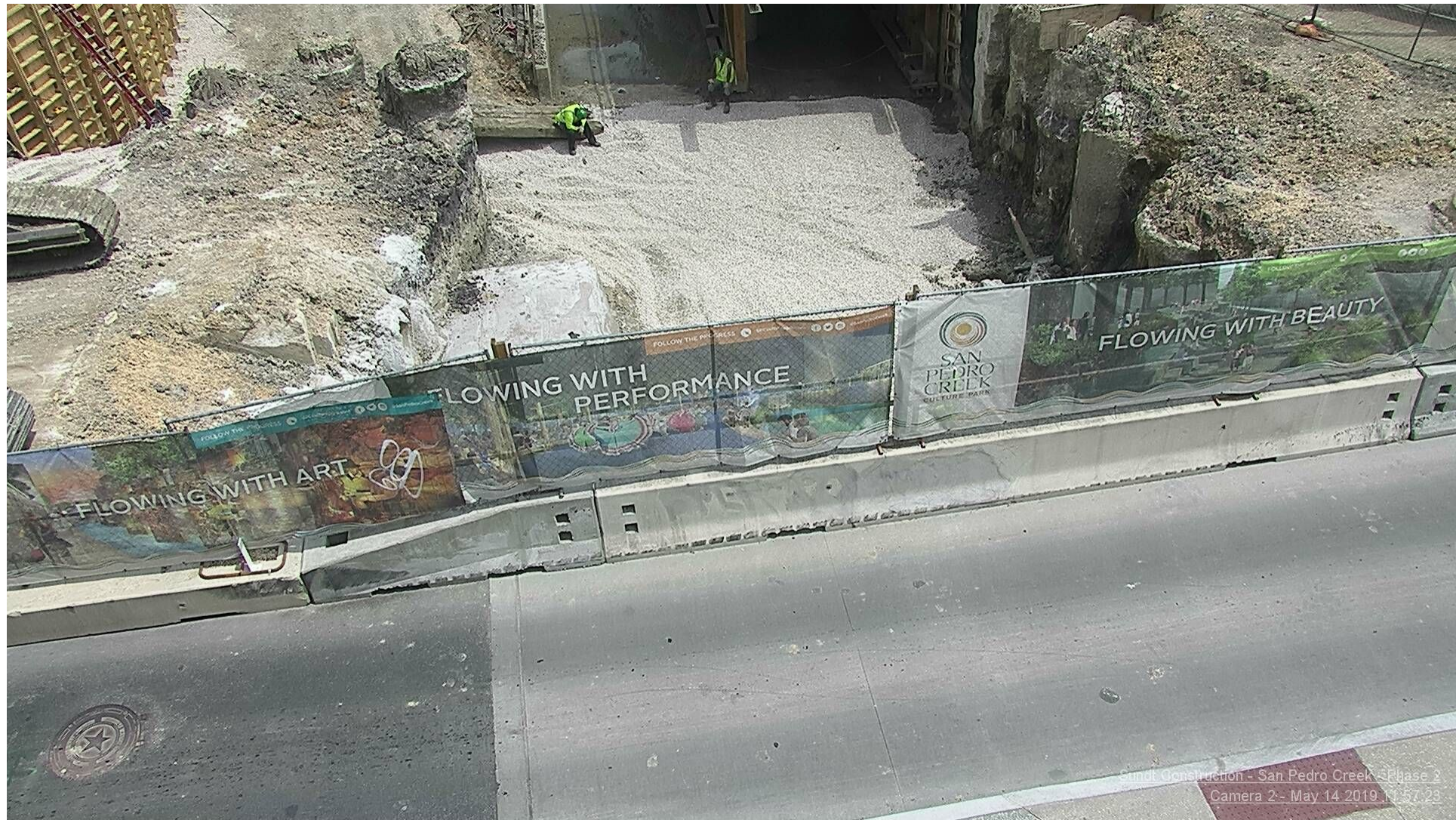
Phase 1.2 Construction

- Commerce Street Bridge
 - Construction of south half completed
 - South lane reopened
 - Full closure still planned from mid-June through July
- Dolorosa Street Bridge
 - Demolition of north half of bridge started
 - Traffic will be reduced to one lane until April 2020



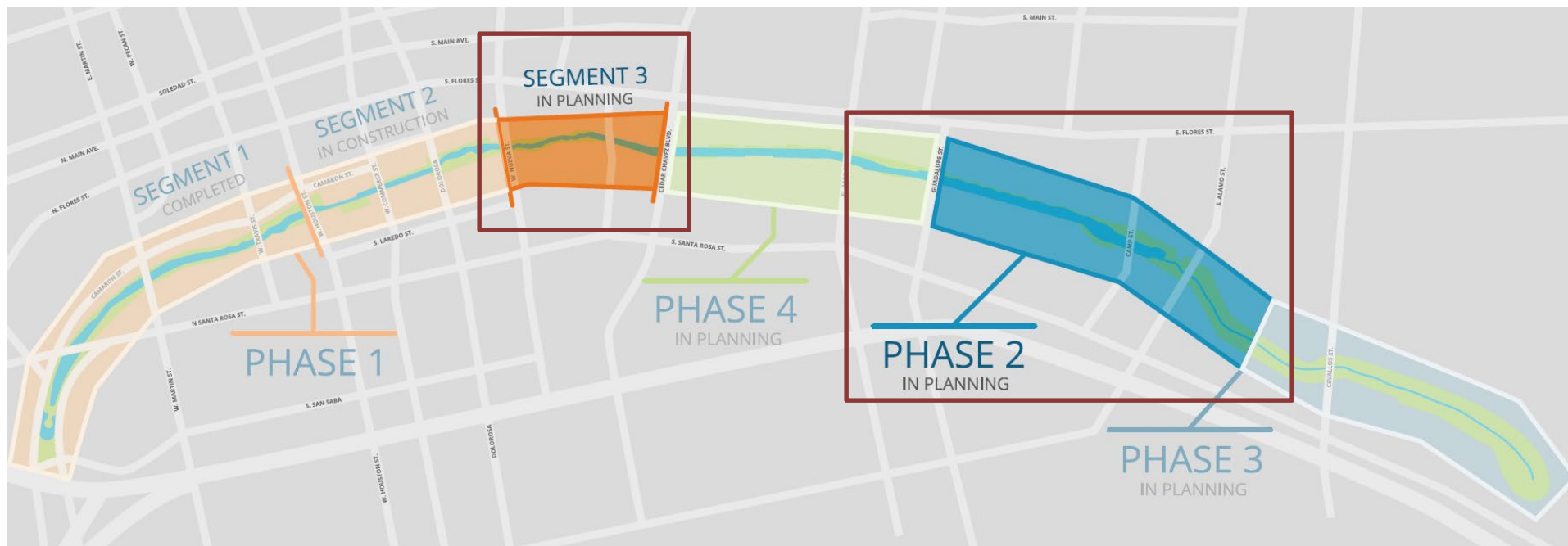








Phase 1.3 and Phase 2



Phase 1.3 and Phase 2 Design

- Second series of charrettes conducted
- Design concepts presented to Judge Wolff and Commissioner Justin Rodriguez
- Design team developing design concepts
- Request Commissioner Court approval in June



Partner Coordination

- Subcommittee – May 9
- Phase 1.2 Coordination ongoing
 - SAISD Administration building
 - UTSA downtown campus
 - TPR/Alameda
 - Commerce Street
 - GSA/Federal Courthouse
- Camaron Street construction
 - Houston to Travis block completed
 - Remainder of work to begin in late 2019





Partner Coordination

- Executive Committee
 - David Smith, County Manager, Bexar County
 - Lori Houston, Assistant City Manager, City of San Antonio
 - Razi Hosseini, Interim Director, Transportation and Capital Improvements, City of San Antonio
 - Suzanne Scott, General Manager, San Antonio River Authority
- Next Regular Monthly Meeting: June 6



Questions



Alameda Plaza



Alameda Gardens



Calder Alley



Culture Mural



El Merodeo





SAN
PEDRO
CREEK
CULTURE PARK





GET FIT

At San Pedro Creek Culture Park

SATURDAY, FEBRUARY 23

▶▶▶ 9:00AM - 1:00PM ◀◀◀

Free parking available at 231 W. Salinas

PROGRAMMING



THE CREEK REMEMBERS

GRAY AND THREATENING SKIES
FILLED WITH WET PROMISE AND LONG MEMORY
COURSES CHANGE BUT STORIES REMAIN
THE CREEK REMEMBERS.

WINDING, WATERY WAY SCRATCHED INTO
ANCIENT EARTH
AS WITH THE FINGERNAIL OF A CHILD AT PLAY
ONCE WILD AND GROWING, NOW TAMED AND
MANICURED
NO MATTER. CHANGE IS THE CONSTANT.
BUT THE CREEK REMEMBERS.
THE STORYTELLERS WORK TO TELL THE TALES,
OLD AND OLDER
WORDS. PAINT. CLAY. LOVE. LIGHT. WATER.
BECAUSE PEOPLE FORGET, YOU KNOW.
BUT THE CREEK WILL ALWAYS REMEMBER.

— DEAN LOCKWOOD



PROGRAMMING

- April 13: Writers Take a Walk
- Monday Night Yoga
- May 14: Community Drum Circle



In honor of World Environment Day,
San Pedro Creek Culture Park
introduces CreekFest – a celebration of
sustainability!

CreekFest makes sustainability fun,
accessible and engaging in an effort to
build awareness and interest in
environmental responsibility and
sustainable practices including low-
impact development, renewable
energy, preventing pollution and
reducing waste.

PROGRAMMING



June 8, 10:00am – 2:00pm



PHASE 1.2 INTERACTIVE WATER WALL

- RFQ closed May 8
 - 27 applications received
- Currently assembling selection panel
- Three finalists will be selected to develop proposals
- Anticipate having artist/artist team on board by late July



PHASE 1.3/PHASE 2 PLANNING

- Working with Design Team to identify art and programming opportunities as part of recent charettes
- Art opps/budgets will be approved as part of project approval (anticipated June)
- Exploring partnerships (COSA, UTSA, Linda Pace)



QUESTIONS?





SAN
PEDRO
CREEK
CULTURE PARK

5/21/2019



Communications

Monica Trevino-Ortega, SARA





SAN
PEDRO
CREEK
CULTURE PARK

ONE YEAR
ANNIVERSARY

Website & Mobile App

Audio-Guia en Espanol

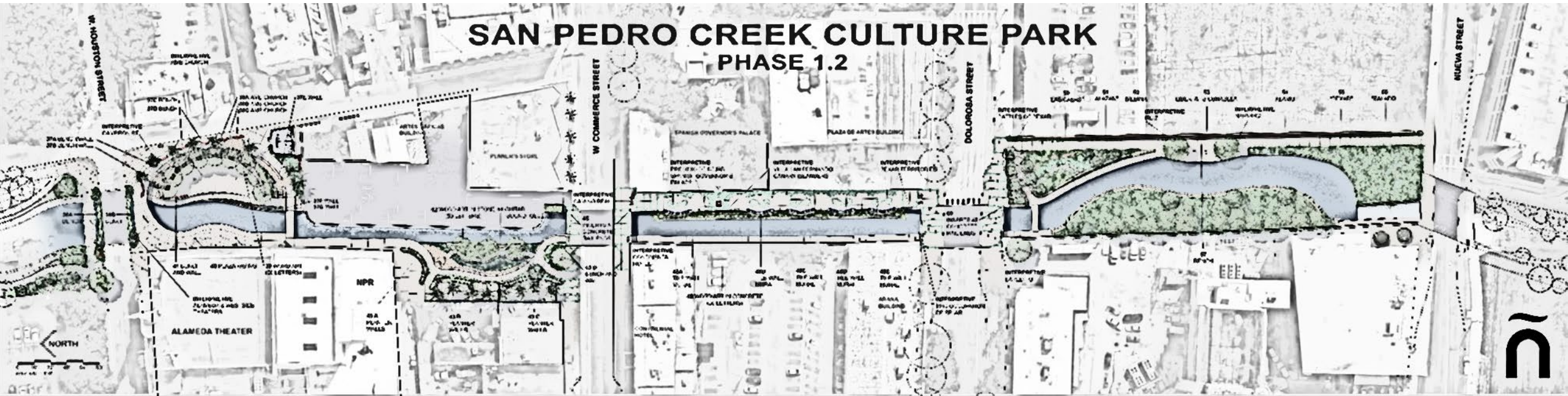


www.spcculturepark.com



Interpretive Plan Update

- Interpretive panel topics finalized
- Phase 1.2 interpretive panel content – ongoing
- Next committee meeting
 - Review final draft
- Commissioner's Court Presentation



Media Coverage

- KSAT
 - Water on/off in wading area
 - Communication to the public
- Solutions
 - Text Alerts
 - Permanent Signage
 - Tracking



IMPORTANT NOTICE: WATER SHUT-OFFS

During times of rain, the water in the Plaza de Fundación may be temporarily turned off for water quality monitoring purposes, without advance notice. The San Antonio River Authority regularly conducts water quality testing to monitor levels of bacteria in the water, which typically increase following rain events as a result of stormwater runoff. Water in this area will remain off until bacteria levels return to levels appropriate for wading, as outlined by the Texas Commission on Environmental Quality. To learn more about water quality and affects from stormwater runoff or to obtain the latest water quality report, please go [here](#).





ACEC Texas Engineering Excellence Awards Gala

May 7 - Washington, DC

- American Council of Engineering Companies
- Submission by design team partner HDR

State Award – March 23, Irving Tx

Grand Award – May 7, Washington DC



SPCCP Awards

2018

- TxA Citation of Honor Award
- ENR Best Project Award – Landscape
- Mayor's Choice Award – Best Project
- ACEC Texas Engineering Excellence Award – Water and Wastewater Gold Medal
 - State Award
 - Grand Award Winner (1 of 16)

2019

- Best of the City Ongoing Transformation Award – San Antonio Magazine
- Building San Antonio Awards SABJ
 - Best Government/Public Project
- American Advertising Awards (Addy's)
 - Gold - Best Online/Interactive Campaign
 - Bronze - FIESTA Medal



Upcoming Dates

- CreekFest
 - June 8, 2019
- SPCCP Subcommittee Meeting
 - June 13, 2019
- International Yoga Day at San Pedro Creek
 - June 21, 2019
- To be determined
 - SPCCP Stakeholder Mixer
 - WCROC Construction Tour



QUESTIONS





SAN ANTONIO
RIVER AUTHORITY

Stormwater Monitoring at Elmendorf Lake

Mick Bartlett
May 21, 2019

Background

- **Problems:** Water quality concerns within the study area (Westside Creeks Restoration Project Conceptual Plan) include low dissolved oxygen, high bacterial loading (i.e., E. coli concentrations), elevated nutrient concentrations, high turbidity and floatable trash debris following storm events and periodic unpleasant odors.
- **Recommendations:**
 - Public education, regulations to specific structural measures such as trash booms, catch basin inserts and netting devices.
 - Bioretention cells.





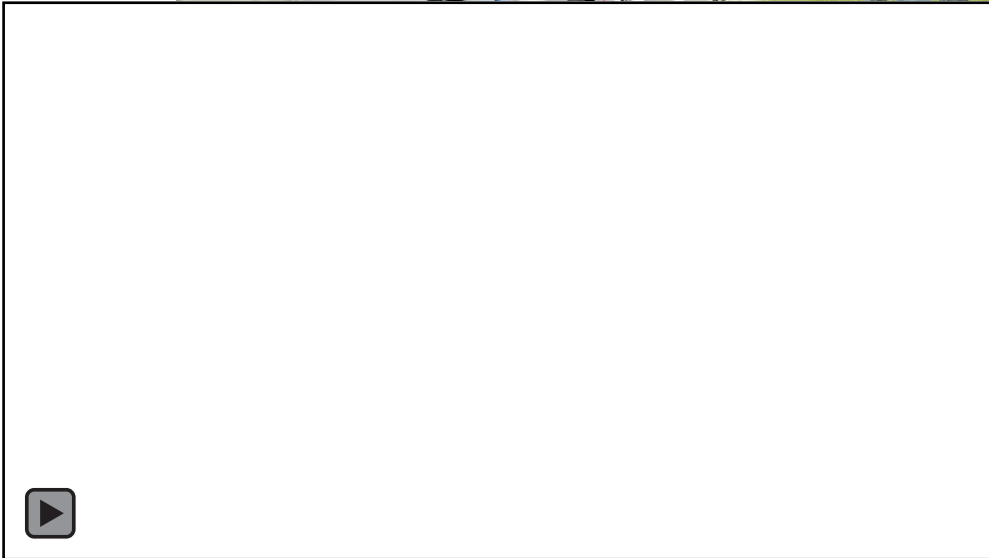
COMMITTED TO SAFE, CLEAN, ENJOYABLE CREEKS AND RIVERS

Objectives

- Quantify pollutant removal effectiveness of the selected bioretention system.
 - Collect a minimum of 5 qualifying storm events
 - ≥ 0.25 " rain
 - ≥ 3 day antecedent period without rain and flow
- Determine water storage characteristics (retention time, flow rate, etc.).



Inlet Design



1. Sampler intake tube
2. PT sensor (level, temp and SpCond)
3. Bubbler tube



Outlet Design



1. Overflow Structure
2. Underdrain with bubbler
3. Collection Container
4. Storm Drain



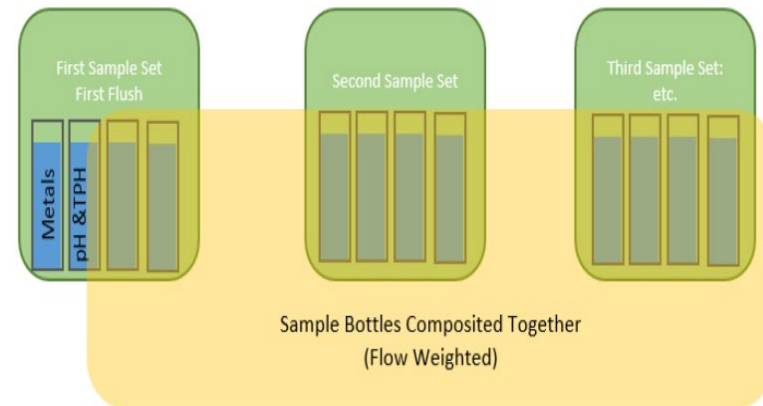
Sampling Process Design

Two samples (first flush & composite) will be collected for each storm event.

Each set of four bottles is collected at defined time intervals.

First flush (Bottles 1-4)

Composite is made up of remainder of sample sets based on flow.



Field Parameters

Rainfall (inches)

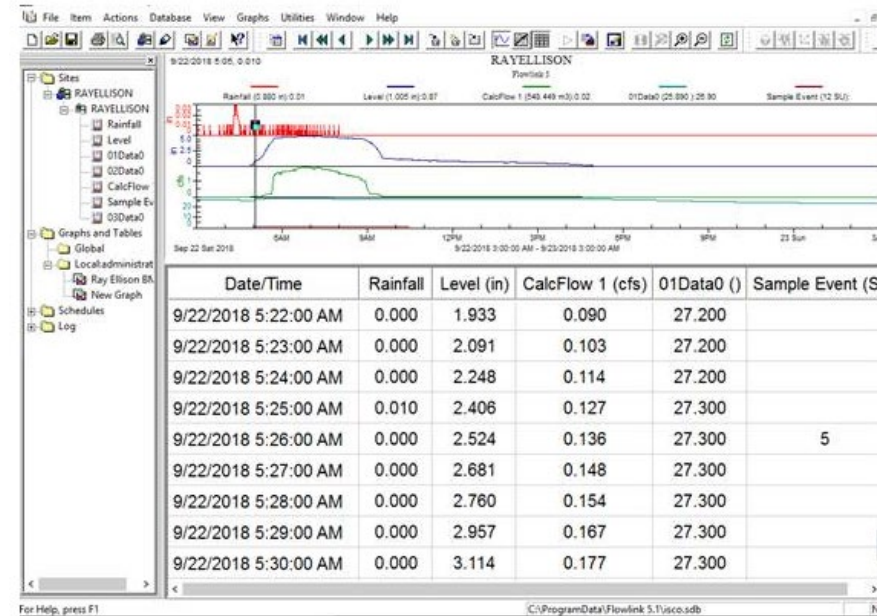
Temperature C°

Specific Conductance
(us/cm)

pH (std. units)

Days Since Last
Precipitation (days)

Discharge (cfs)



Questions?



COMMITTED TO SAFE, CLEAN, ENJOYABLE CREEKS AND RIVERS