

ZARZAMORA CREEK LINEAR CREEKWAY TRAIL

Westside creeks



restoration project



Public Meeting
February 6, 2018

LINEAR CREEKWAY TRAILS PROJECT

- Howard Peak Greenway Trail System: City-wide trails network
- Trail network on the Westside Creeks to complement the Westside Creeks Restoration Project vision

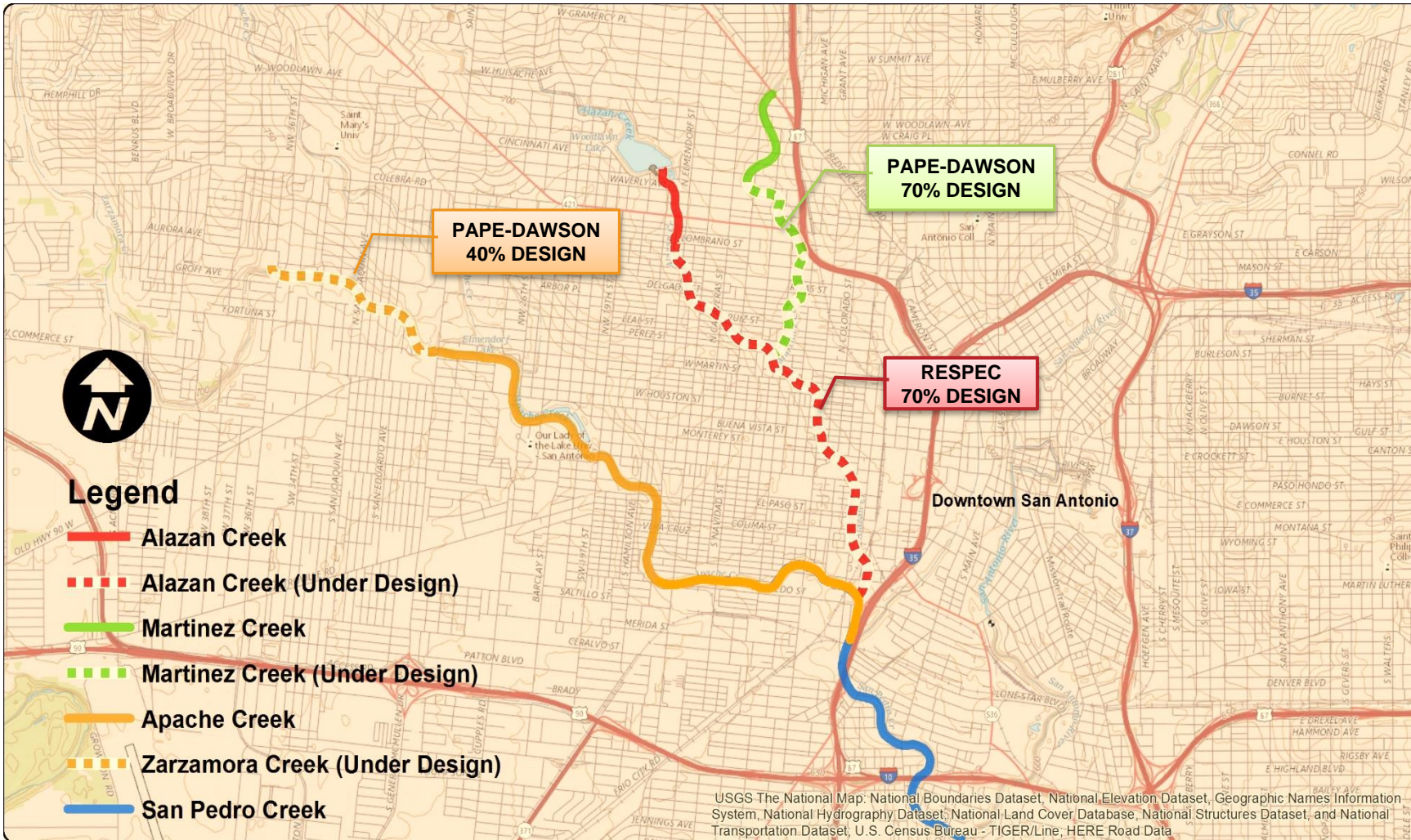


XIMENES ASSOCIATES, INC.
Facilitating Communication and Consensus Since 1984

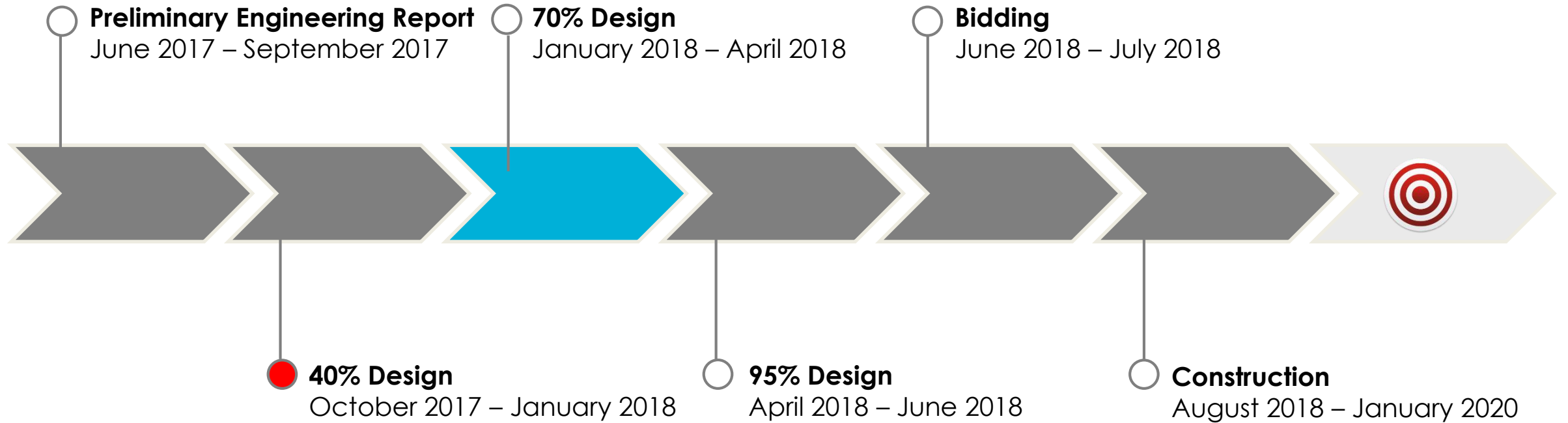


LINEAR CREEKWAY TRAILS PROJECT

- Initial segments of trail completed prior to 2017
- New segment of Zarzamora Creek Trail will be 10 feet wide and 1.5 miles long
- Trail to begin at W. 36th St. and end at Gen McMullen (tie to existing Trail)



SCHEDULE



COMPONENTS OF GOOD TRAIL DESIGN

- Safe
- Accessible
- Accommodate walkers, strollers, wheelchairs, bicycles, etc.
- Provides different experiences through winding trail alignments, elements of surprise, and a variety of views
- Environmental, social and economic sustainability
- Provide connections to neighborhoods, landmarks ,schools etc.
- Rest areas with shade
- Educational and interpretive opportunities
- Amenities: drinking fountains, bike racks, picnic tables, etc.

PROPOSED TRAIL ALIGNMENT

Western Termination at 36th Street (for Future Extension)

Eastern Connection Point at General McMullen (Existing Trail)

(9) Proposed Street Connections

- 36th Street (Alderete Park)
- Esmeralda Street
- 34th Street
- San Joaquin Street
- San Ignacio Street
- Dartmouth Street
- San Felipe Street
- General McMullen Street
- W. Martin Street

PROPOSED TRAIL ALIGNMENT

Street Connection Selection Criteria

- Property currently owned by SARA or City of San Antonio
- Adequate space for trail connection
- Priority placed on connections to landmarks, schools and parks
- Main trail is on same side of the creek.

EXAMPLE STREET CONNECTION

Tobin Park Trailhead @ Salado Creek



Broadway St. @ Brackenridge Park



ZARZAMORA CREEK STREET CONNECTIONS

- Provide access points to the trail for the community
- Connect to existing and proposed landmarks
 - schools
 - parks
- Provide areas of rest and shade
- Slow down bicycle traffic at streets
- Provide signage with interpretive elements, wayfinding, and trail rules



ZARZAMORA CREEK @ GEN McMULLEN DR.



PAPE-DAWSON ENGINEERS

FORD POWELL & CARSON
Architects & Planners, Inc.



Ximenes & Associates, Inc.

XIMENES & ASSOCIATES, INC.
Facilitating Communication and Consensus Since 1984



CITY OF SAN ANTONIO PARKS & RECREATION

SAN ANTONIO RIVER AUTHORITY
Leaders in Watershed Solutions

PAPE-DAWSON ENGINEERS

FORD POWELL & CARSON
ARCHITECTS & PLANNERS, INC.

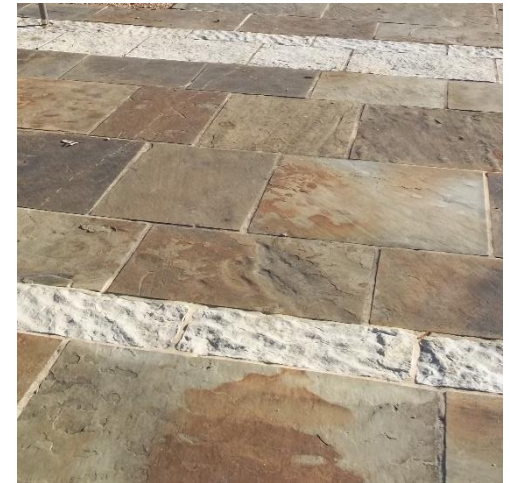
MATERIALS: SIGNAGE



MATERIALS: CONCRETE & STONE WALLS



MATERIALS: STONE PAVING



AMENITIES



XIMENES & ASSOCIATES, INC.
Facilitating Communication and Consensus Since 1984



**CITY OF SAN ANTONIO
PARKS & RECREATION**

**SAN ANTONIO
RIVER AUTHORITY**
Leaders in Watershed Solutions

**PAPE-DAWSON
ENGINEERS**

**FORD
POWELL
& CARSON**
ARCHITECTS & PLANNERS, INC.

PUBLIC INPUT

Form groups at each Trail Map

Mark up maps with any comments

Place dots for trail connection points

- Dots can be placed on currently proposed connection points or additional recommended points
- (8) Dots will be provided to each person

Comment Cards are also available for any additional comments