

# MARTINEZ CREEK LINEAR CREEKWAY TRAIL

Westside creeks



restoration project



Public Meeting  
January 18, 2018

# LINEAR CREEKWAY TRAILS PROJECT

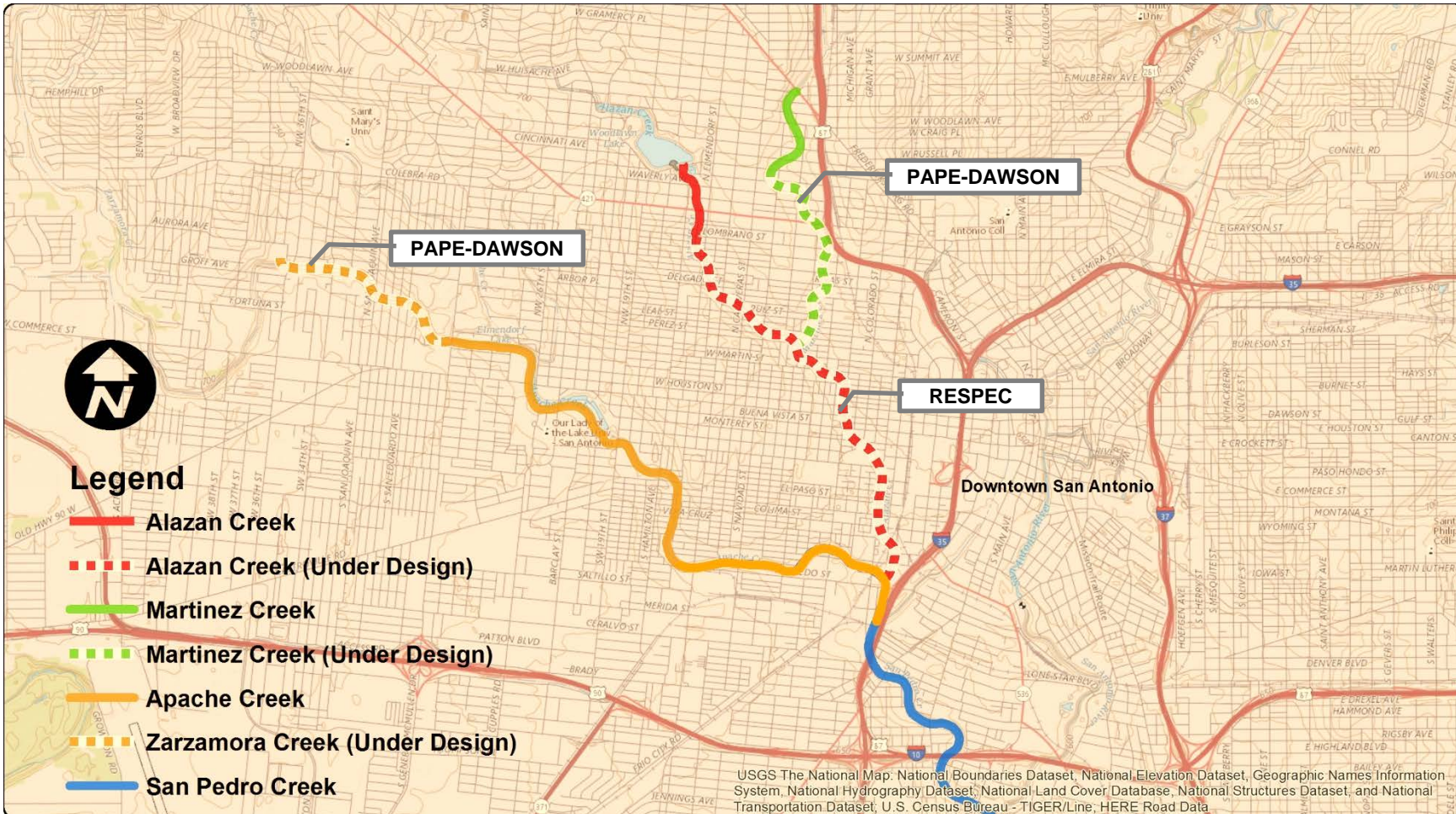


- Howard Peak Greenway Trail System: City-wide trails network
- Trail network on the Westside Creeks to complement the Westside Creeks Restoration Project vision





# LINEAR CREEKWAY TRAILS PROJECT



- Initial segments of trail completed prior to 2017
- New segment of Martinez Creek Trail will be 10 feet wide and 1.5 miles long
- Trail to begin at the existing Cincinnati and end at the Farias Park (tie to Alazan Creek Trail)

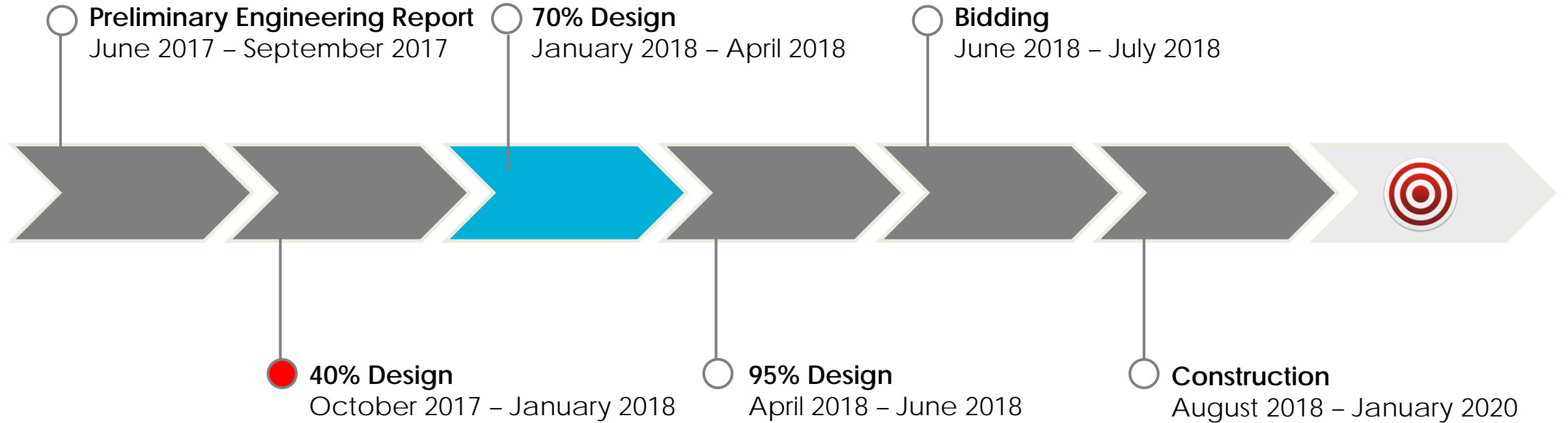


# FUNDING

- \$3,100,000 in funding allocated by the City of San Antonio City Council through the 2015 Proposition 2 Sales Tax initiative for the design and construction of Martinez Creek
- SARA is constructing trail which will be given to the City once completed.
- City of San Antonio is providing funding to plant trees and install the corresponding irrigation systems along the trail.



# SCHEDULE



# COMPONENTS OF GOOD TRAIL DESIGN

- Safe
- Accessible
- Accommodate walkers, strollers, wheelchairs, bicycles, etc.
- Provides different experiences through curvilinear alignment, elements of surprise, and a variety of views
- Environmental, social and economic sustainability
- Provide connections to neighborhoods, landmarks, schools etc.
- Rest areas with shade
- Educational and interpretive opportunities
- Amenities: drinking fountains, bike racks, picnic tables, etc.





# PROPOSED TRAIL ALIGNMENT

Northern Connection Point at Cincinnati Street (Existing Trailhead)

Southern Connection Point at Farias Park (Alazan Creek Trail)

## (8) Proposed Street Connections

- University Ave
- N. Sabinas Street
- Laurel Street
- Poplar Street
- Delgado Street
- Arbor Place
- Ruiz Street
- Leal Street



# PROPOSED TRAIL ALIGNMENT

## Street Connection Selection Criteria

- Property currently owned by SARA or City of San Antonio
- Adequate space for trail connection
- Priority placed on connections to landmarks, schools and parks
- Main trail is on that side of the creek.





# EXAMPLE STREET CONNECTION

Tobin Park Trailhead @ Salado Creek



Broadway St. @ Brackenridge Park





# MARTINEZ CREEK STREET CONNECTIONS

- Provide access points to the trail for the community
- Connect to existing and proposed landmarks
  - schools
  - parks
- Provide areas of rest and shade
- Slow down bicycle traffic at streets
- Provide signage with interpretive elements, wayfinding and trail rules





# MATERIALS: SIGNAGE



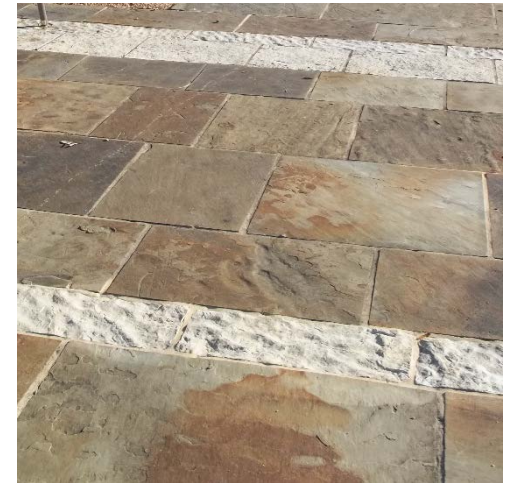


# MATERIALS: CONCRETE & STONE WALLS





# MATERIALS: STONE PAVING





# AMENITIES



# PUBLIC INPUT

Form groups at each Trail Map

Mark up maps with any comments

Place dots for trail connection points

- Dots can be placed on currently proposed connection points or additional recommended points
- (8) Dots will be provided to each person

Comment Cards are also available for any additional comments

