

ALAZAN CREEK LINEAR CREEKWAY TRAIL

Westside creeks



restoration project



City of San Antonio



CITY OF SAN ANTONIO
PARKS & RECREATION



SAN ANTONIO
RIVER AUTHORITY
Leaders in Watershed Solutions

Public Meeting
November 14, 2017

LINEAR CREEKWAY TRAILS PROJECT

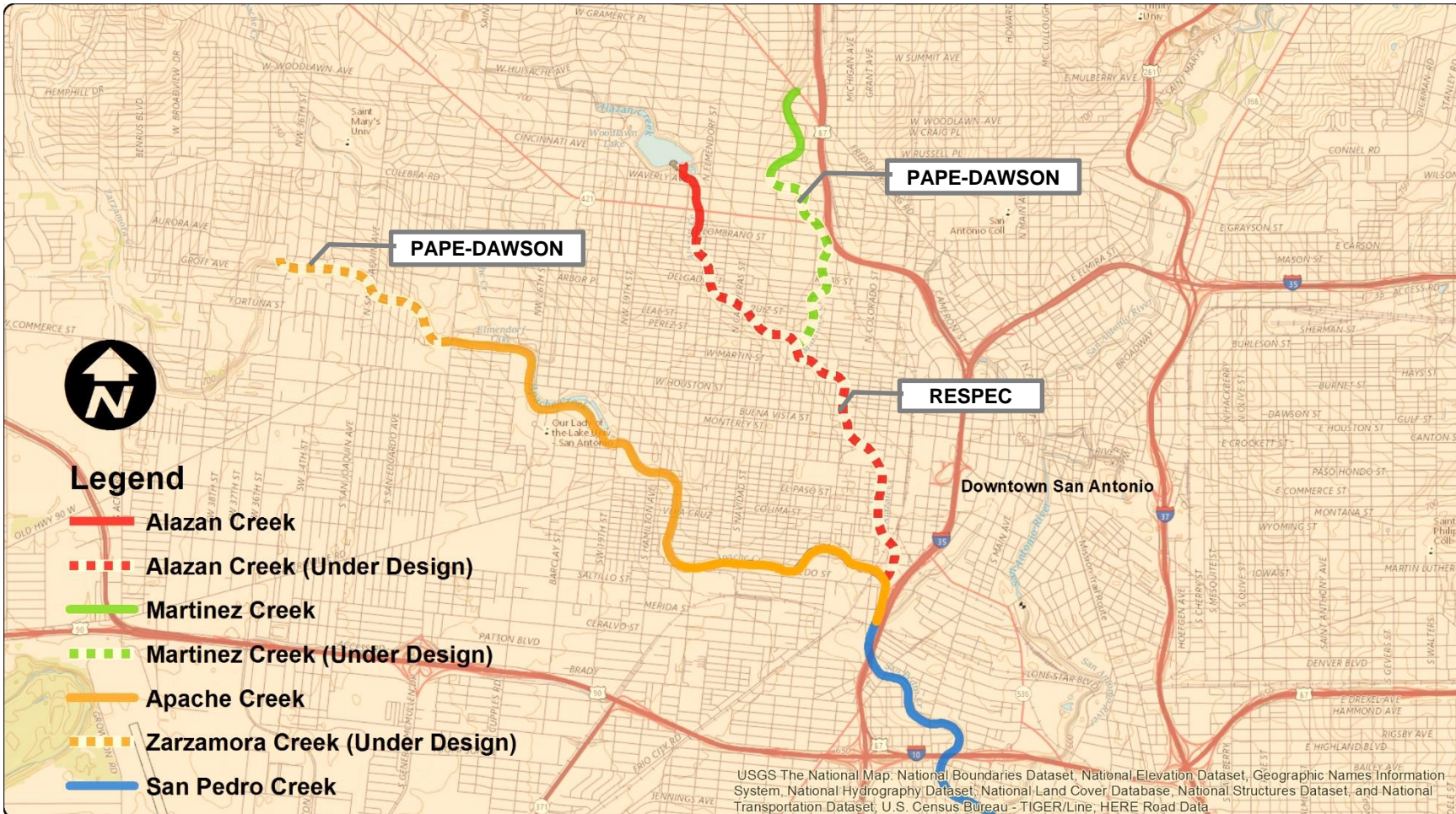


- Howard Peak Greenway Trail System: City-wide trails network
- Trail network on the Westside Creeks to complement the Westside Creeks Restoration Project vision



LINEAR CREEKWAY TRAILS PROJECT

- Initial segments of trail completed in 2016
- New segment of Alazan Creek Trail will be 10 feet wide and 2.9 miles long
- Trail to begin at the existing Alazan Creek Trail and end at the existing Apache Creek Trail



PUBLIC PARTNERSHIPS



City of San Antonio



CITY OF SAN ANTONIO
PARKS & RECREATION

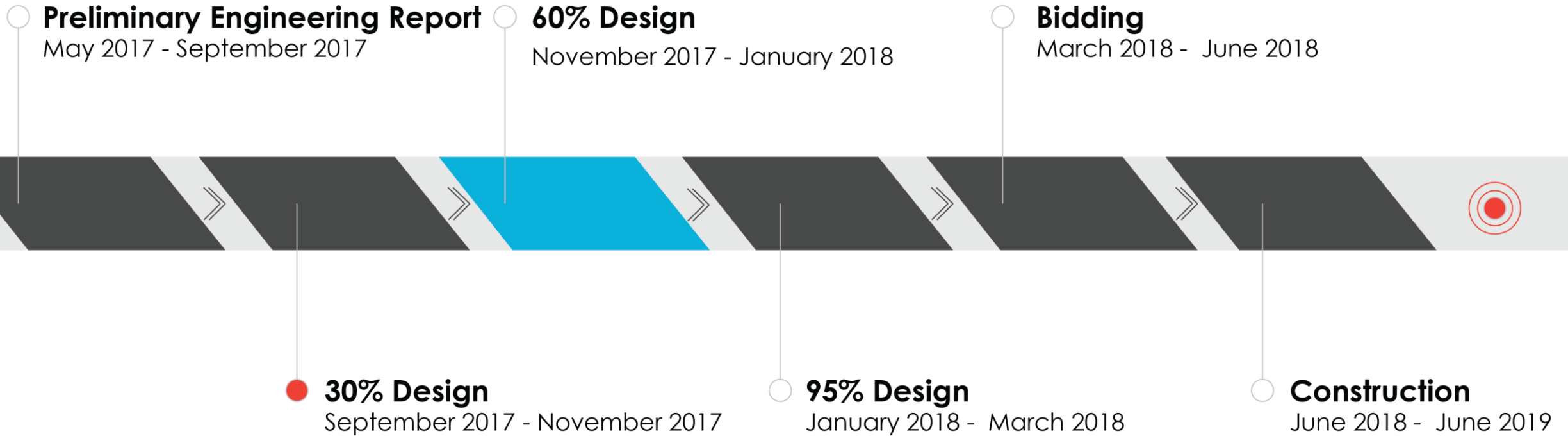


FUNDING

- \$3,500,000 in funding allocated by the City of San Antonio City Council through the 2015 Proposition 2 Sales Tax initiative for the design and construction of Alazan Creek
- Remaining funding awarded by Alamo Area Metropolitan Planning Organization Grant in 2017 for allowable reimbursement for up to \$2,500,000
 - Stringent guidelines for how funding can be appropriated
 - Funding is managed by TxDOT
 - Alazan Creek added to the Statewide Transportation Improvement Program (STIP)



SCHEDULE



COMPONENTS OF GOOD TRAIL DESIGN

- Safe
- Accessible
- Accommodate walkers, strollers, wheelchairs, bicycles, etc.
- Provides different experiences through curvilinear alignment, elements of surprise, and a variety of views
- Environmental, social and economic sustainability
- Provide connections to neighborhoods, landmarks ,schools etc.
- Rest areas with shade
- Educational and interpretive opportunities
- Amenities:, drinking fountains, bike racks, picnic tables, etc.



PROPOSED TRAIL ALIGNMENT

Northern Connection Point at Lombrano Street

Southern Connection Point at an existing low water crossing near IH-10

(7) Proposed Street Connections

- Menchaca Street
- Elmendorf Street
- Arbor Place
- Sabinas Street
- Martin Street
- Colorado Street
- Chavez Boulevarde

Connection to Farias Park



PROPOSED TRAIL ALIGNMENT

Street Connection Selection Criteria

- Property currently owned by SARA or City of San Antonio
- Adequate space for trail connection
- Priority placed on connections to landmarks, schools and parks
- Main trail is on that side of the creek.



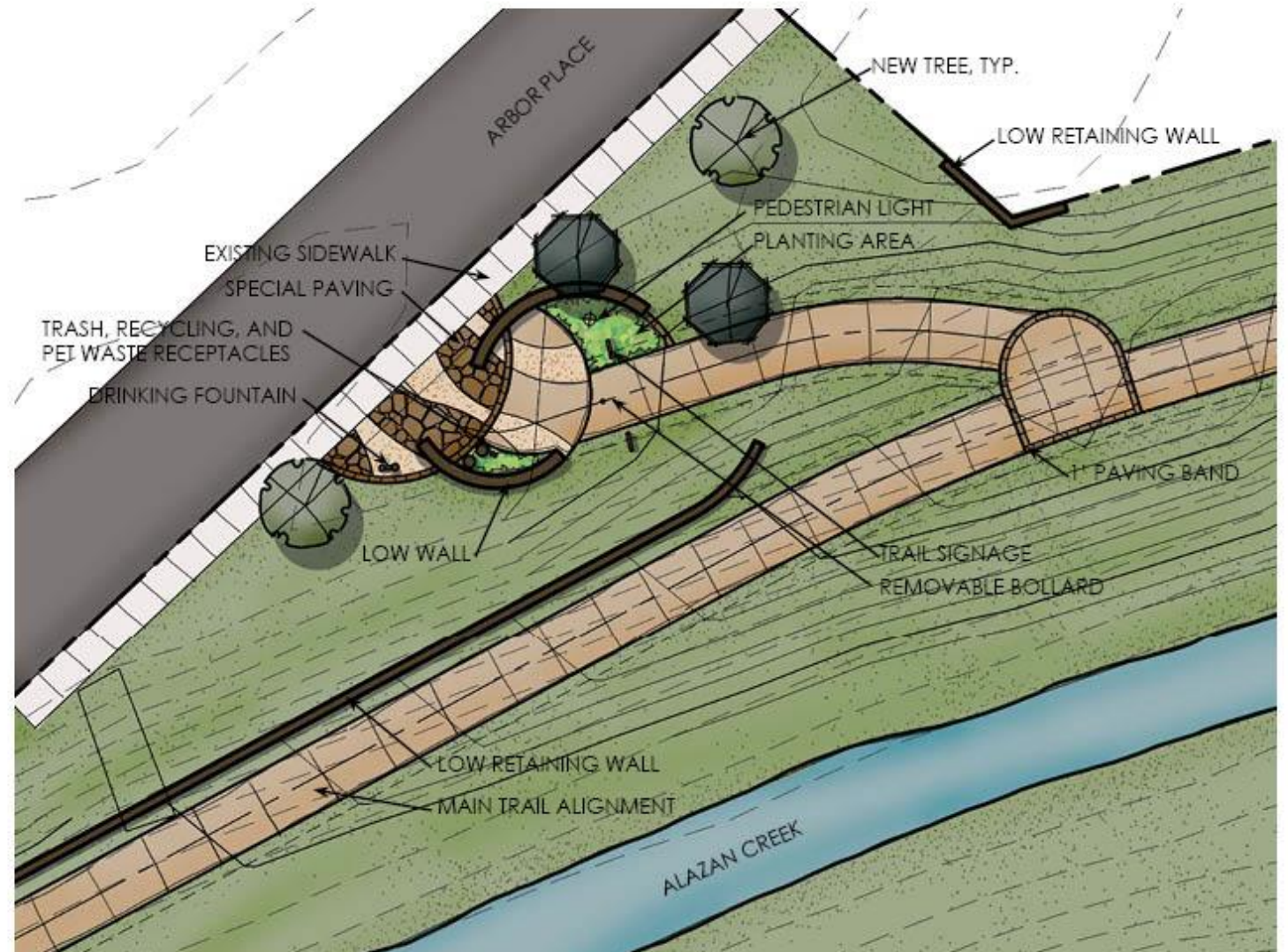
EXAMPLE STREET CONNECTION

Mission Reach: South Cross Street Connection



ALAZAN CREEK STREET CONNECTIONS

- Provide access points to the trail for the community
- Connect to existing and proposed landmarks
 - schools
 - parks
- Provide areas of rest and shade
- Slow down bicycle traffic at streets
- Provide signage with interpretive elements, wayfinding and trail rules



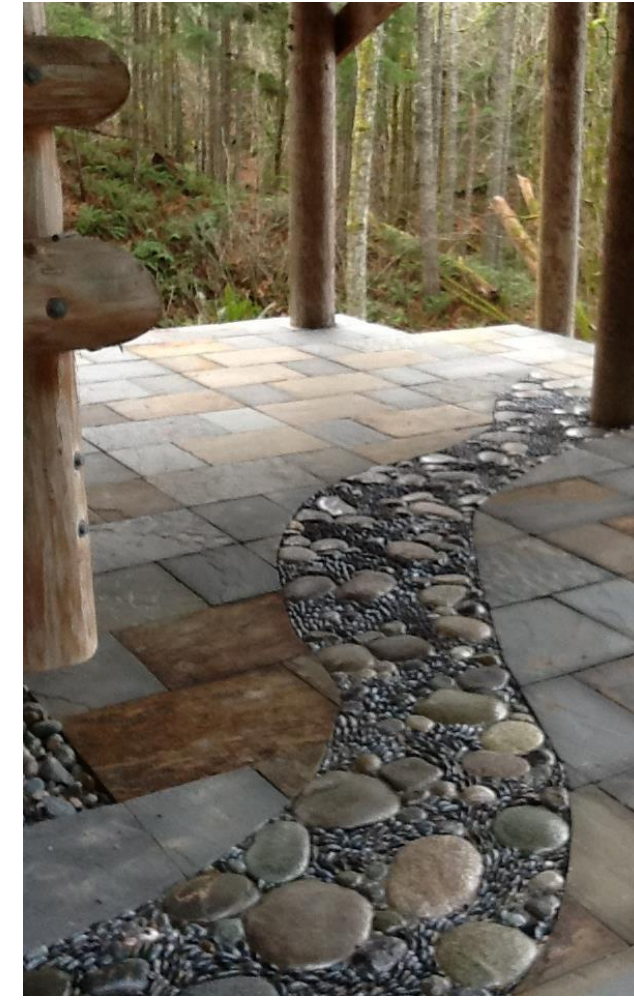
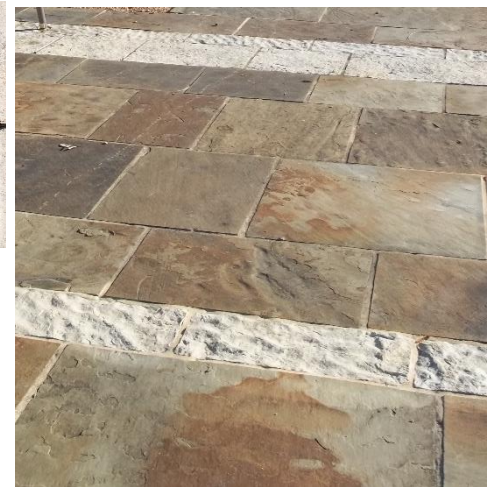
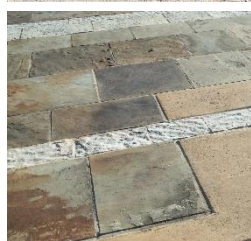
MATERIALS: SIGNAGE



MATERIALS: STONE WALLS



MATERIALS: STONE PAVING



AMENITIES



PUBLIC INPUT

Form groups at each Trail Map

Mark up maps with any comments

Place dots for trail connection points

- Dots can be placed on currently proposed connection points or additional recommended points
- (8) Dots will be provided to each person

Comment Cards are also available for any additional comments

