

# ALAZAN CREEK TRAIL



CITY OF SAN ANTONIO  
**PARKS & RECREATION**



SAN ANTONIO  
RIVER AUTHORITY  
Leaders in Watershed Solutions

Public Meeting  
March 20, 2018

# LINEAR CREEKWAY TRAILS PROJECT



- Howard Peak Greenway Trail System
- Safe connectivity







# FUNDING AND PUBLIC PARTNERSHIPS

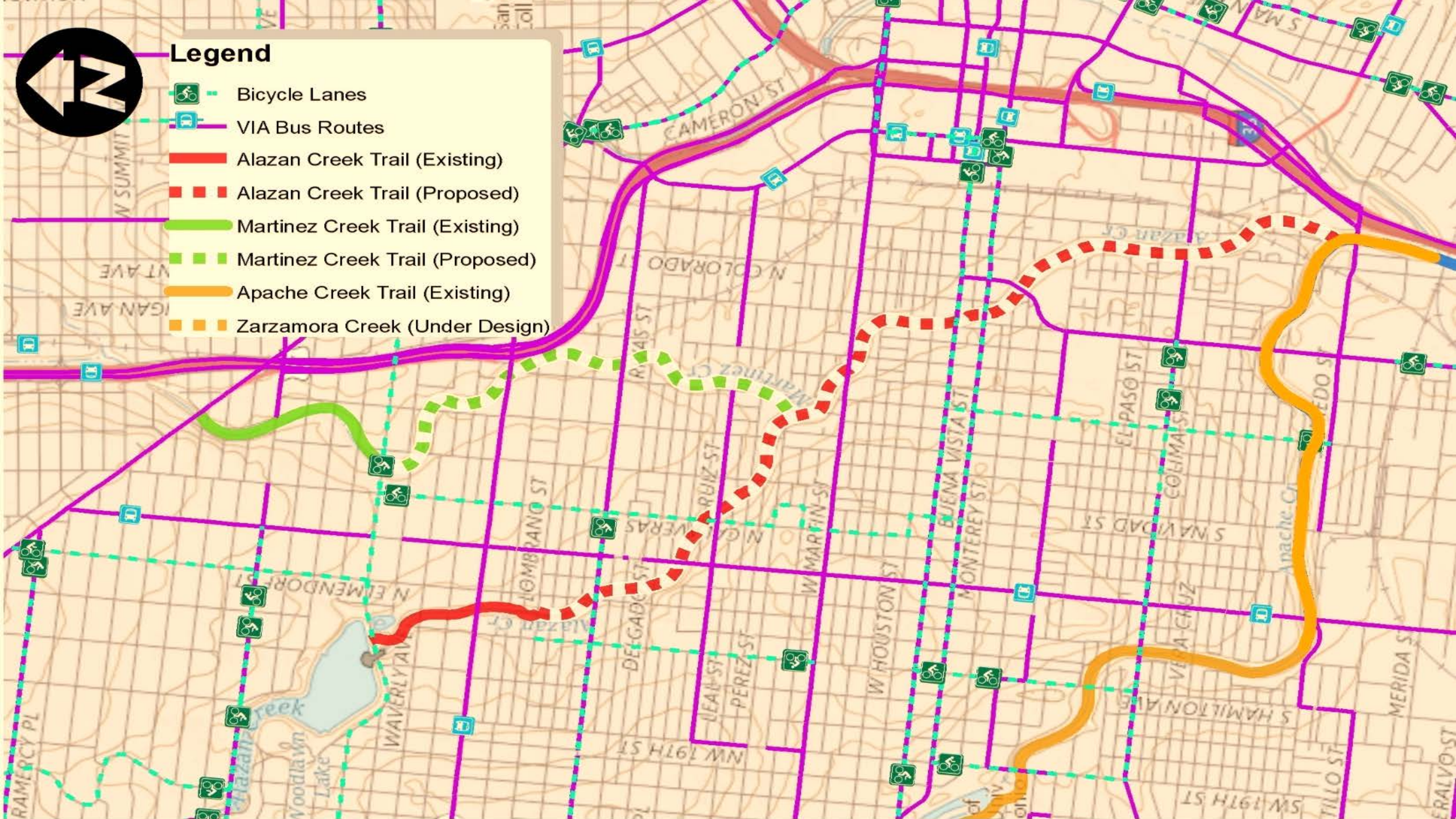
- ↓ \$3,500,000 in funding allocated by the **City of San Antonio** City Council through the 2015 Proposition 2 Sales Tax initiative
- ↓ **Parks and Recreation Department** allocated funds to **San Antonio River Authority** to manage and lend expertise in design and construction
- ↓ \$2,500,000 in federal funding awarded to **San Antonio River Authority** by **Alamo Area Metropolitan Planning Organization** in 2017
- ↓ **Texas Department of Transportation** is managing funding and reviewing plans to ensure we receive reimbursement





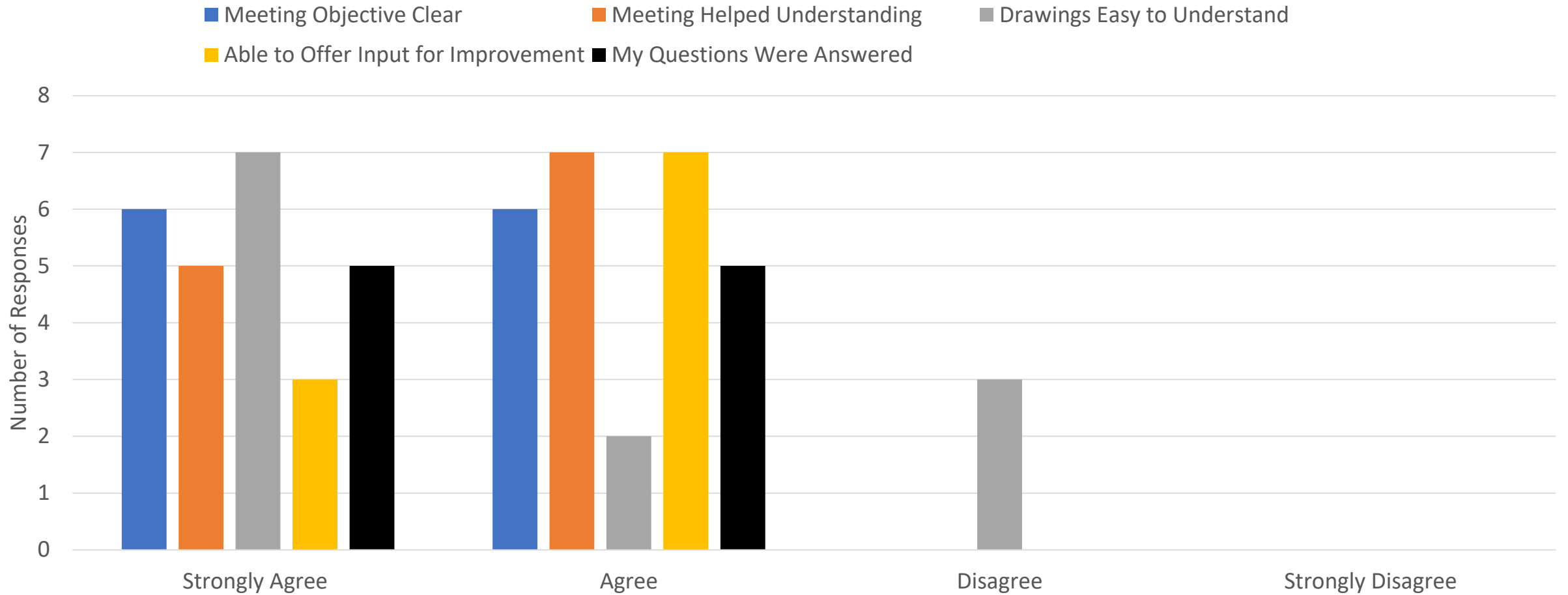
### Legend

-  Bicycle Lanes
-  VIA Bus Routes
-  Alazan Creek Trail (Existing)
-  Alazan Creek Trail (Proposed)
-  Martinez Creek Trail (Existing)
-  Martinez Creek Trail (Proposed)
-  Apache Creek Trail (Existing)
-  Zarzamora Creek (Under Design)



# COMMENTS FROM MEETING #1

## Alazan Trail Comments - 56 Responses



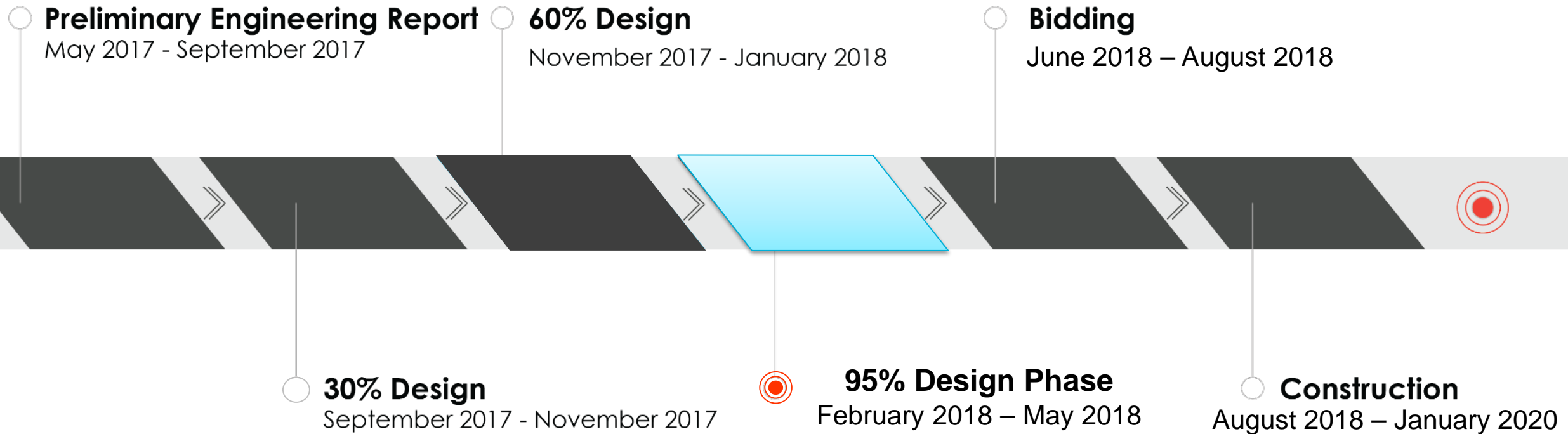
# COMMENT CARD SUMMARY

COMMENT	NUMBER
LIGHTING	4
RESTROOMS	4
SECURITY	2
CONNECTION (GUADALUPE)	2
WATER	2
OUTREACH	2
READABILITY	2
SHADE	2
BIKE LANES	1
COMMUNITY GARDEN	1
SIGNAGE	1
TRAIL MATERIAL	1



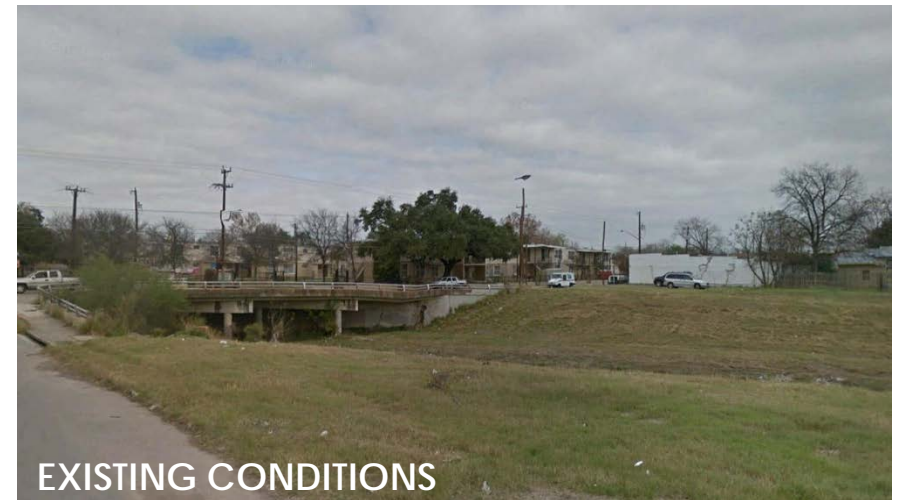


# ALAZAN CREEK TRAIL SCHEDULE





# POPLAR STREET CONNECTION



# LANDSCAPE, HARDSCAPE & LIGHTING

## TREES



MONTERREY OAK



CEDAR ELM



MEXICAN SYCAMORE

## ORNAMENTAL GRASSES



MEXICAN FEATHERGRASS



LINDHEIMER'S MUHLY



PINK FLAMINGO

## STONE WALLS



## DECORATIVE PAVING



## LIGHTING



## SHRUBS/PERENNIALS



RED YUCCA



INDIGO SPIRES



BULBINE



PINK SKULLCAP



COREOPSIS

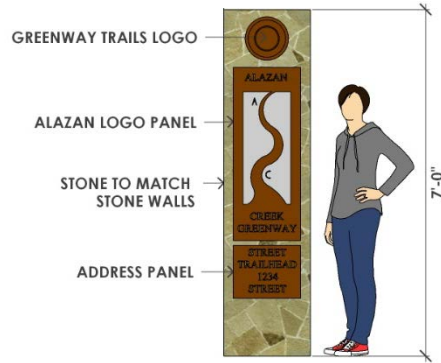


RED SALVIA

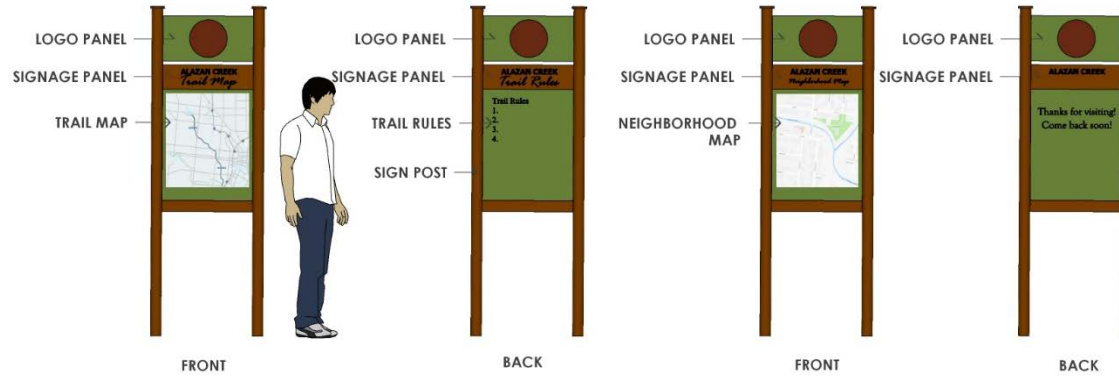


# TRAIL SIGNAGE

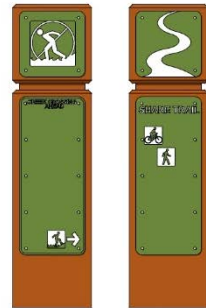
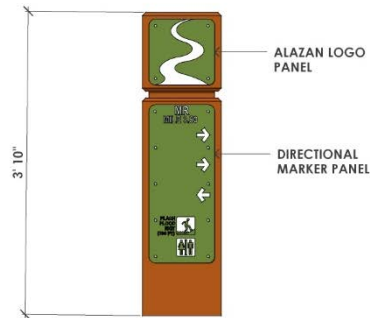
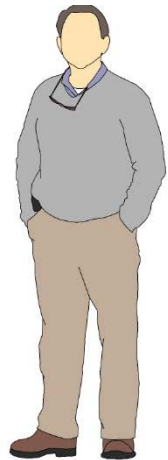
## MONUMENT SIGNAGE



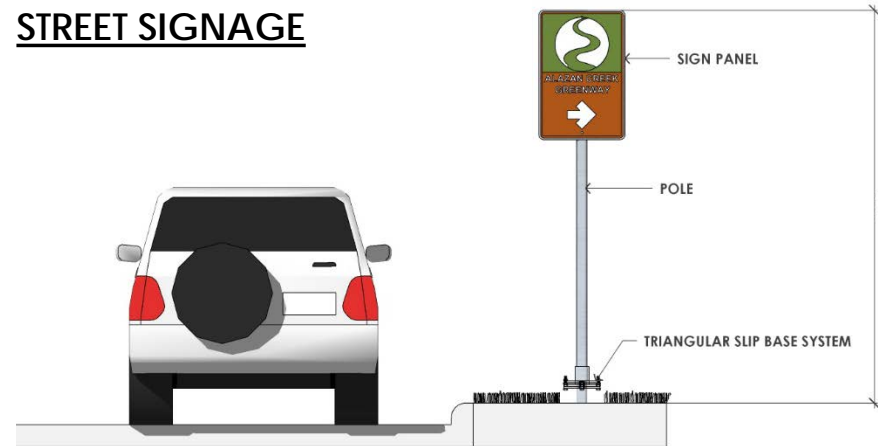
## WAYFINDING SIGNAGE



## DIRECTIONAL SIGNAGE



## STREET SIGNAGE



# WALLS

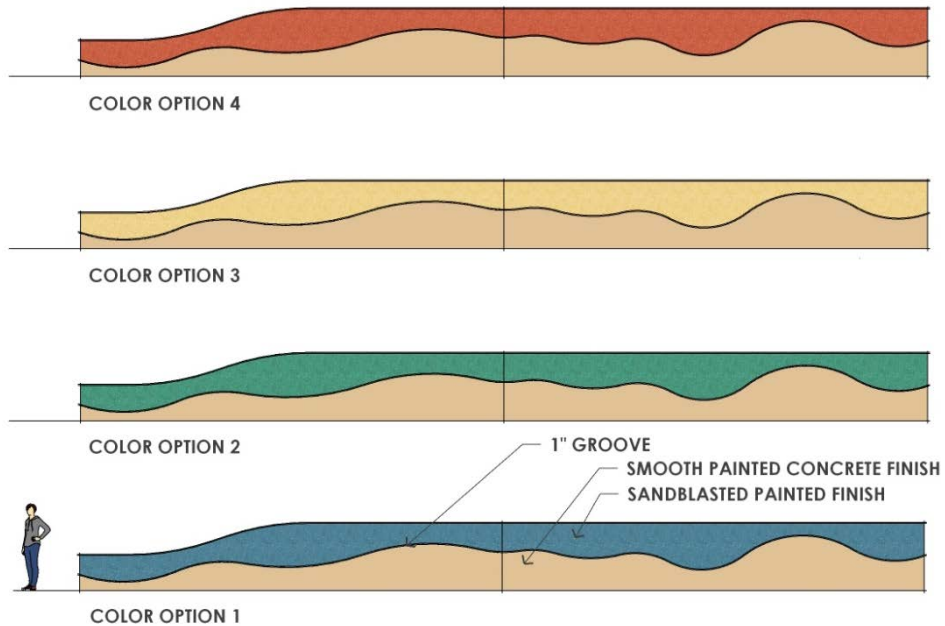
## EXISTING WALLS



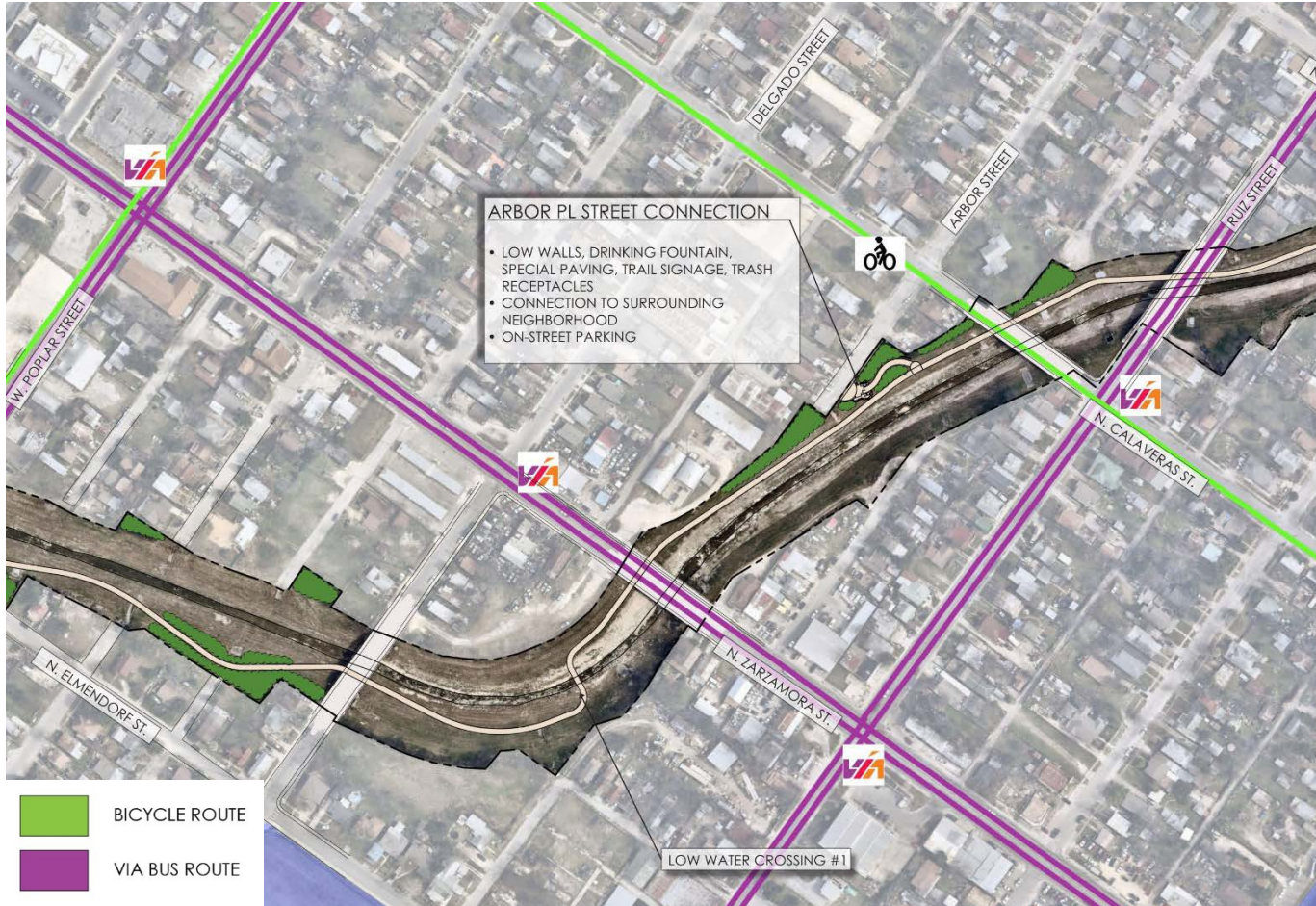
## SANDBLASTED WALLS



## PROPOSED WALLS



# ARBOR STREET CONNECTION



# SABINAS STREET CONNECTION



# MARTIN STREET CONNECTION

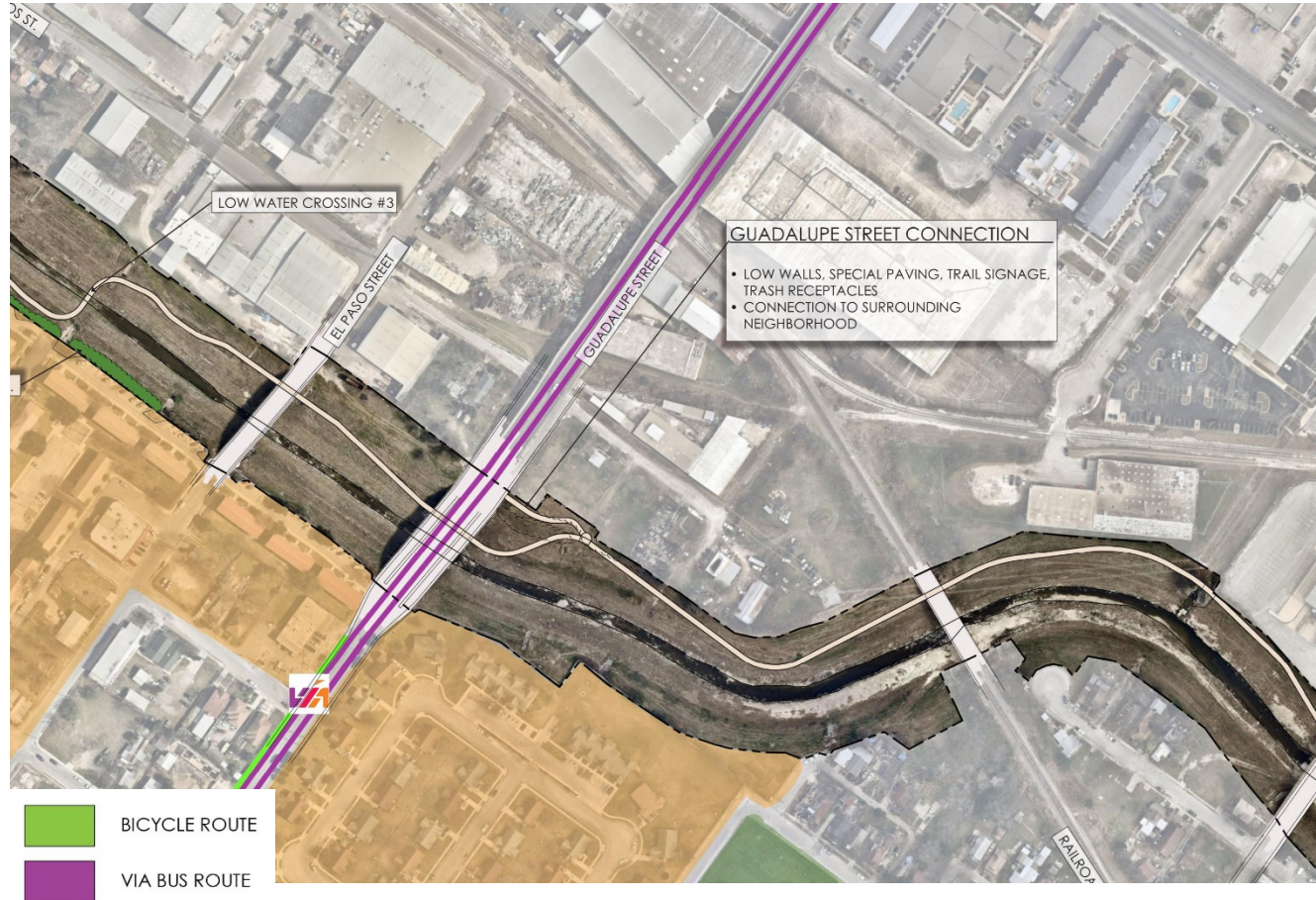


# COLORADO STREET CONNECTION





# GUADALUPE STREET CONNECTION



# PUBLIC INPUT

Form groups at each Trail Map

Mark up maps with any comments

Feel free to ask questions

Comment Cards are available for any additional input

