

SAN PEDRO CREEK IMPROVEMENTS

SAN ANTONIO, TX



SAN ANTONIO
RIVER AUTHORITY

Leaders in Watershed Solutions

Design Activity Update



- Schedule Coordination
 - Feb 20: Cost Estimation Begins
 - Feb 23-March 24: Internal QA/QC on 40% Design
 - March 27: 40% Design Submittal Due
 - April 1-30: 40% Design Approval and Next Steps

Design Activity Update



- Advancing the Design, Develop Deliverables:
 - Build on the Dec 6th site plan
 - Drawing Development
 - Basis of Design (BOD) documentation
 - Specifications (expanded Table of Contents)
 - Planning the cost estimate

Design Activity Update



Advancing the Design:

- Gate Facility Programming, Preliminary Design.
 - Project team working session (including SARA, COSA and Bexar County) conducted on December 11, 2014

WATER CHARACTER



Purpose of Gate Structures



- To hold back water and create a scenic cascade of stable pools in the reach of San Pedro Creek extending from the tunnel intake structure to South Alamo Street
- To appropriately respond to high flow events by passing excess water downstream without increasing established pre-project flood elevations
- To conserve and control water as appropriate

Gate Aesthetics

- Gates should be low profile
- Gates should provide views and sounds of falling water
- Gate operating and control features should be visually unobtrusive

Recommendation

- Hydraulically Actuated Steel Crest Gates Are Recommended at Each Location
 - State of the art gate systems
 - Used at Brooklyn Ave lock and dam
 - Used at modified gate six
 - Satisfies all SPC design criteria

Steel Crest Gates



Steel Crest Gates



Steel Crest Gate



Major System Components



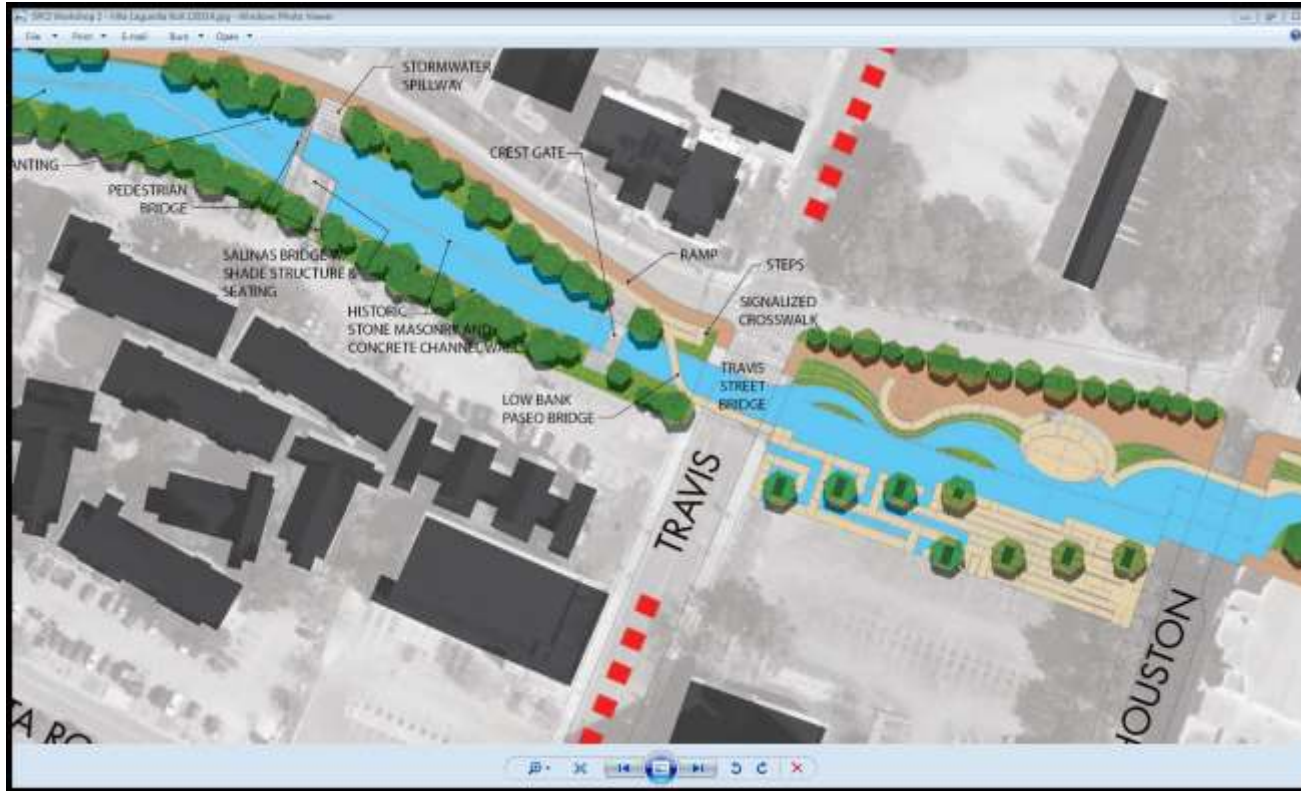
- Concrete foundation
- Gate leaf and hinge (torque tube) system; side seals
- Hydraulic cylinder
- Waterproof concrete cylinder vault (concealed option)
- Hydraulic pressure unit (HPU); lines & valves
- Control building for HPU and PLC; HVAC, transformer, backup power generator

San Pedro Creek Gate Locations



- Travis Street
- Nueva Street
- South Alamo Street

Travis St. Gate Structure



Travis St. Gate Structure

- Looking Downstream



- Looking Upstream



Travis St. Gate Structure



Nueva St. Gate Structure



Nueva St. Gate Structure

- Looking Downstream



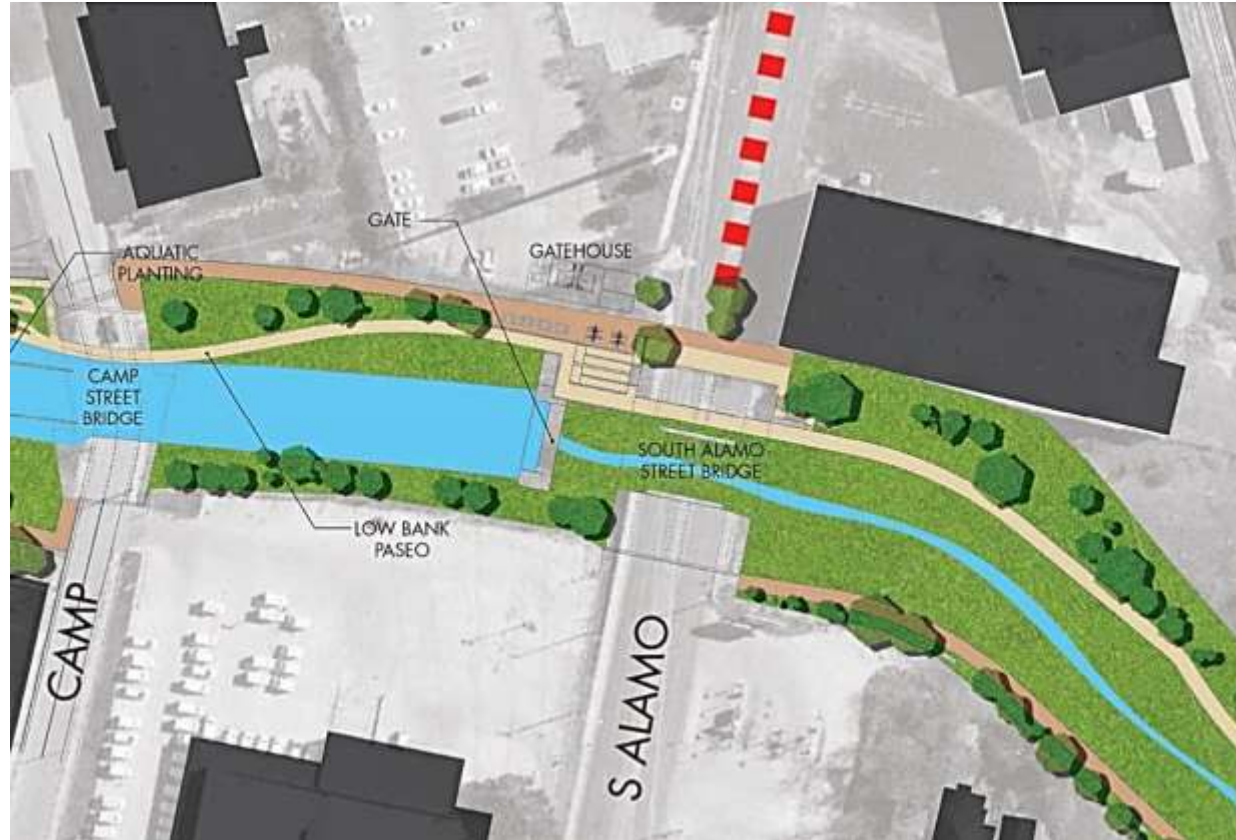
- Looking Upstream



Nueva St. Gate Structure



S. Alamo St. Gate Structure



S. Alamo St. Gate Structure

- Looking Downstream



- Looking Upstream



S. Alamo St. Gate Structure



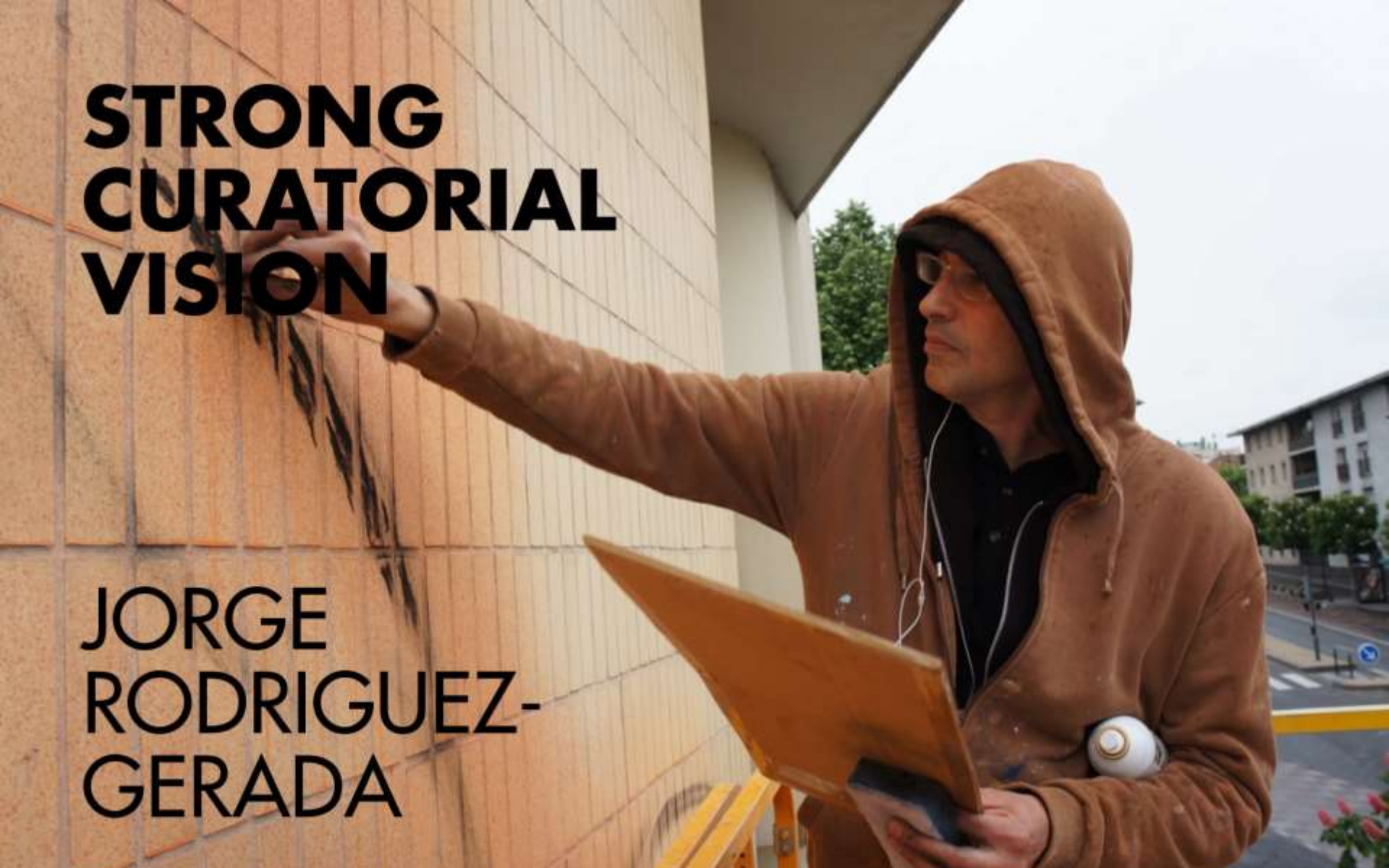
ART PROGRAM

Artist Scope

- Site tour December 22th, 2014
- Conceptualize an overarching artistic vision
- Assist in developing the public art program
- Assist in curating public art and artist selection
- Execute select portion of project public art

**STRONG
CURATORIAL
VISION**

**JORGE
RODRIGUEZ-
GERADA**



Westside Creeks Restoration Oversight Committee Meeting



Signage Work Group

Tuesday, February 10, 2015

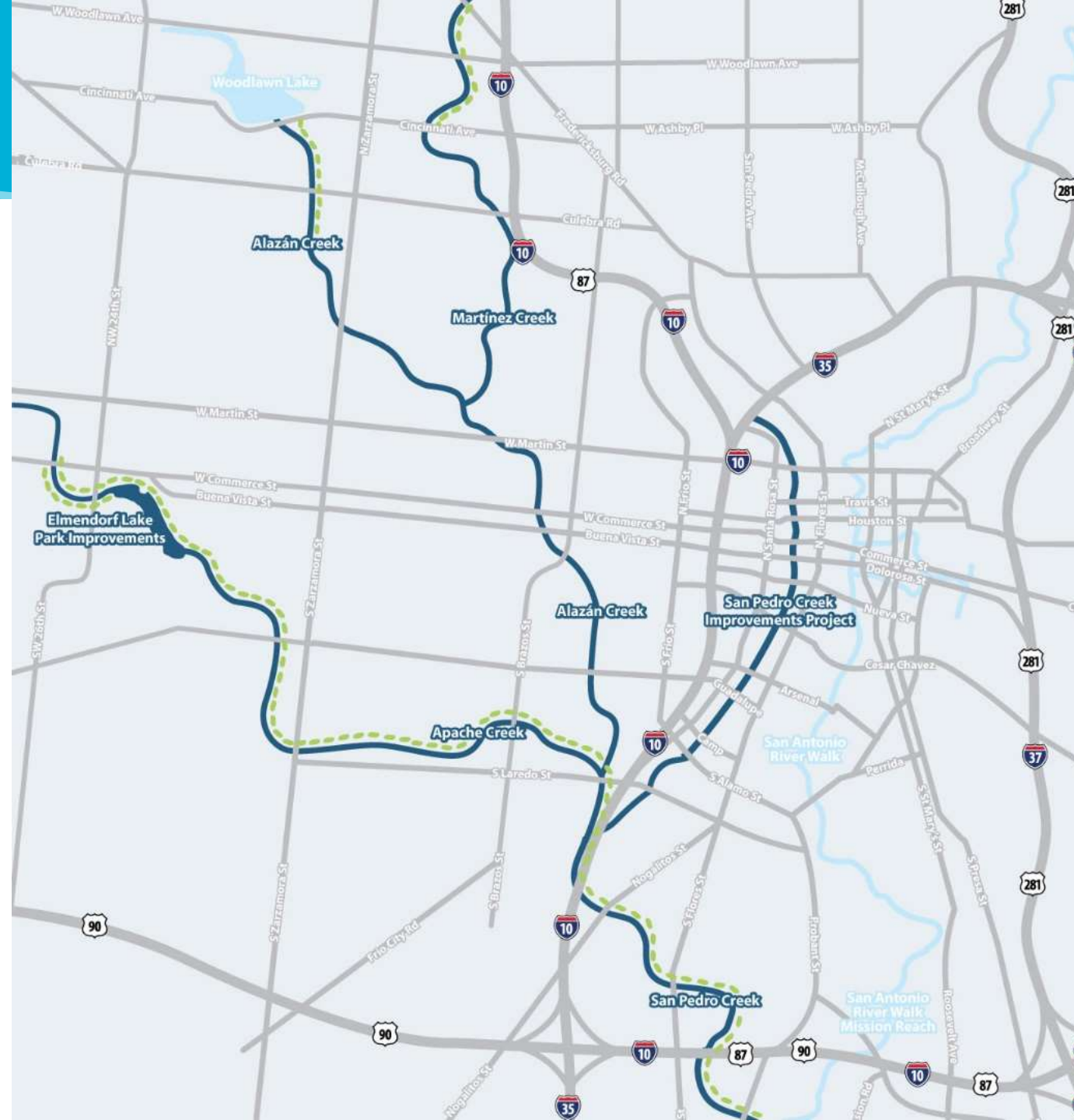
Signage Types & Projects

Projects

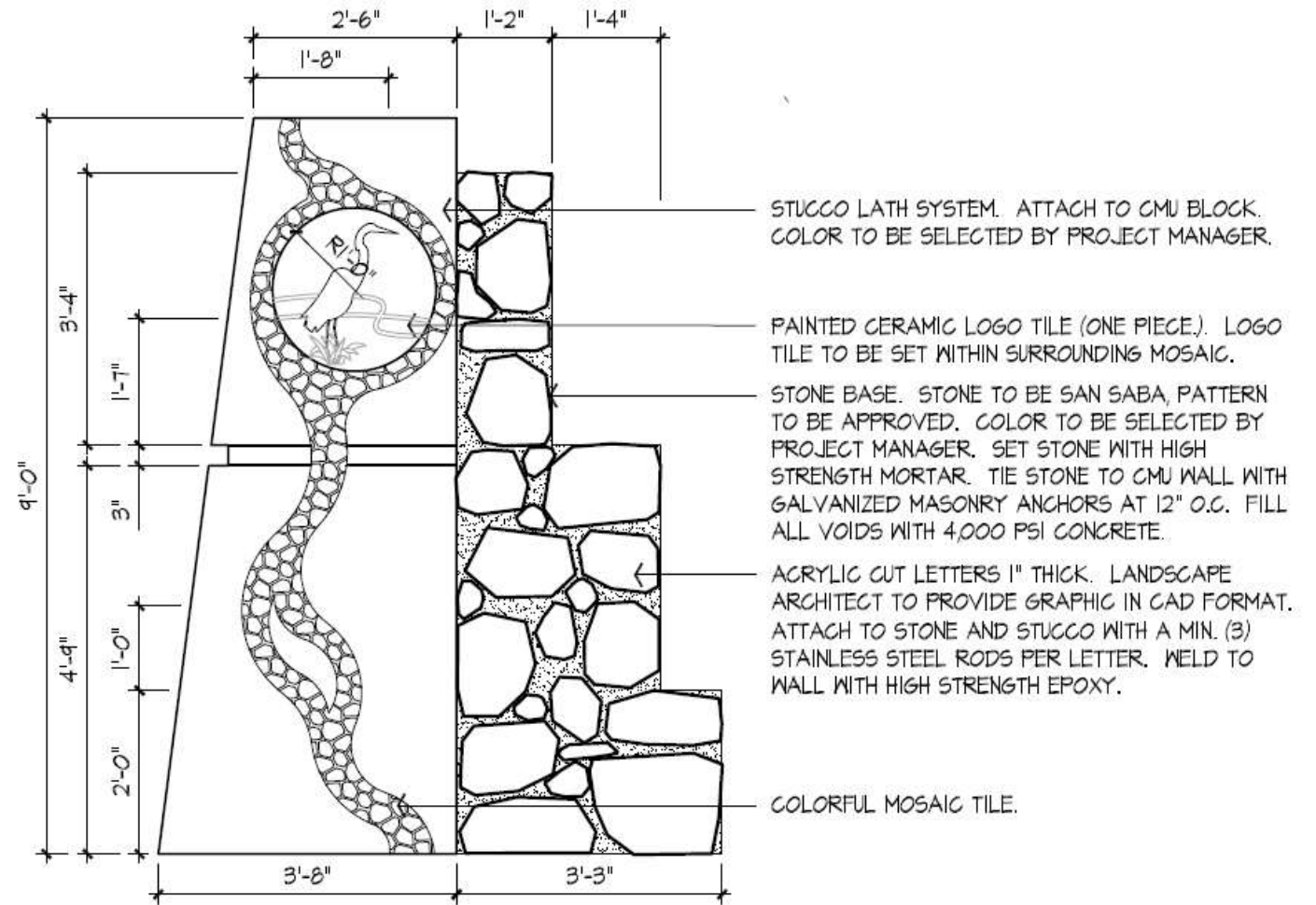
- Alazan/Martinez Creekway Trails
- Elmendorf Lake Park
- Apache/San Pedro Creekway Trails
 - North Segment
 - South Segment

Sign Types

- Monument / Trail Head
- Map
- Wayfinding
- Interpretative

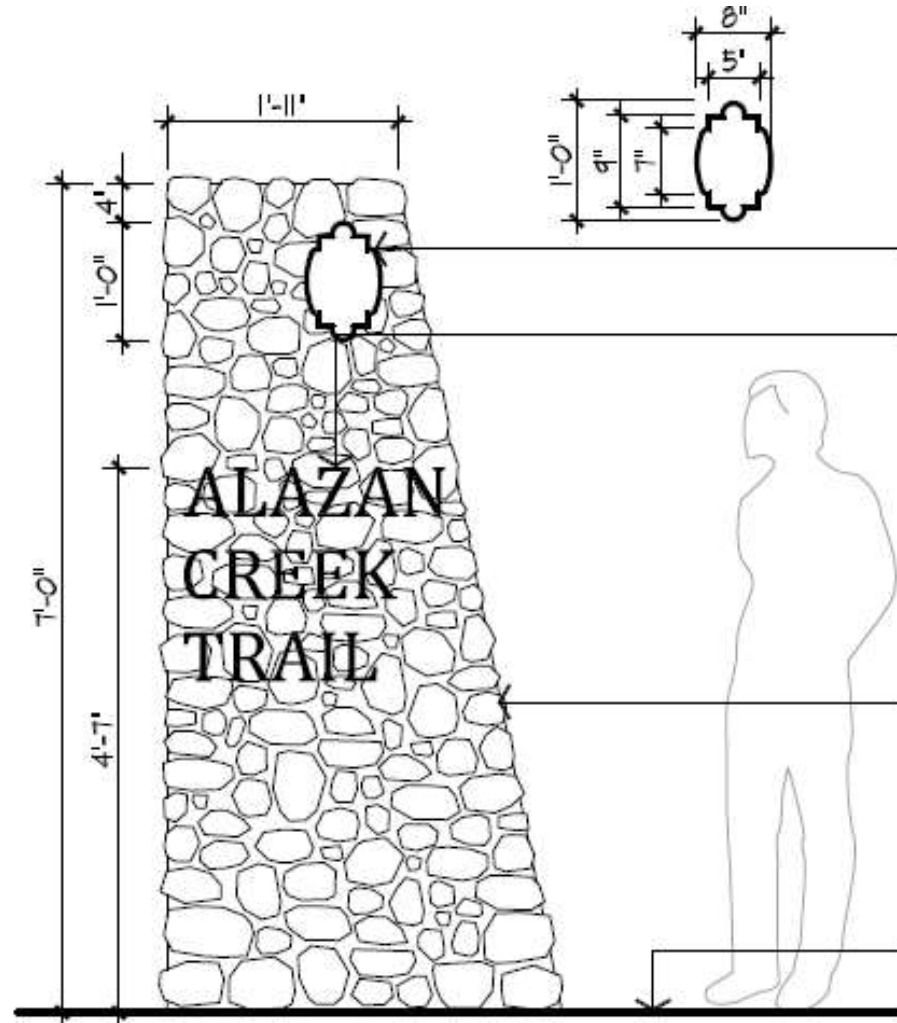


Monument / Trail Head Sign Examples



7 ELEVATION: ENTRY MONUMENT
Scale: 1/2" = 1'-0"

Monument / Trail Head Sign Examples



INLAID TILE ACCENT, (1) PER SIDE. SHAPE AND POSITION AS SHOWN. COLOR TO BE SELECTED.

TRAIL NAME, 3/8" ALUMINUM PLATE, CUT TO SHAPE AND WITH CUT OUTS AS SHOWN.

LANDSCAPE ARCHITECT TO PROVIDE GRAPHIC IN CAD FORMAT. ATTACH TO STONE MONUMENT WITH A MINIMUM OF (4) 9" THREADED RODS PER LETTER. WELD RODS TO BACK OF LETTERS, SET INTO STONE WITH HIGH STRENGTH EPOXY. FACE OF LETTERS TO BE SET 1" AWAY FROM THE FACE OF MONUMENT.

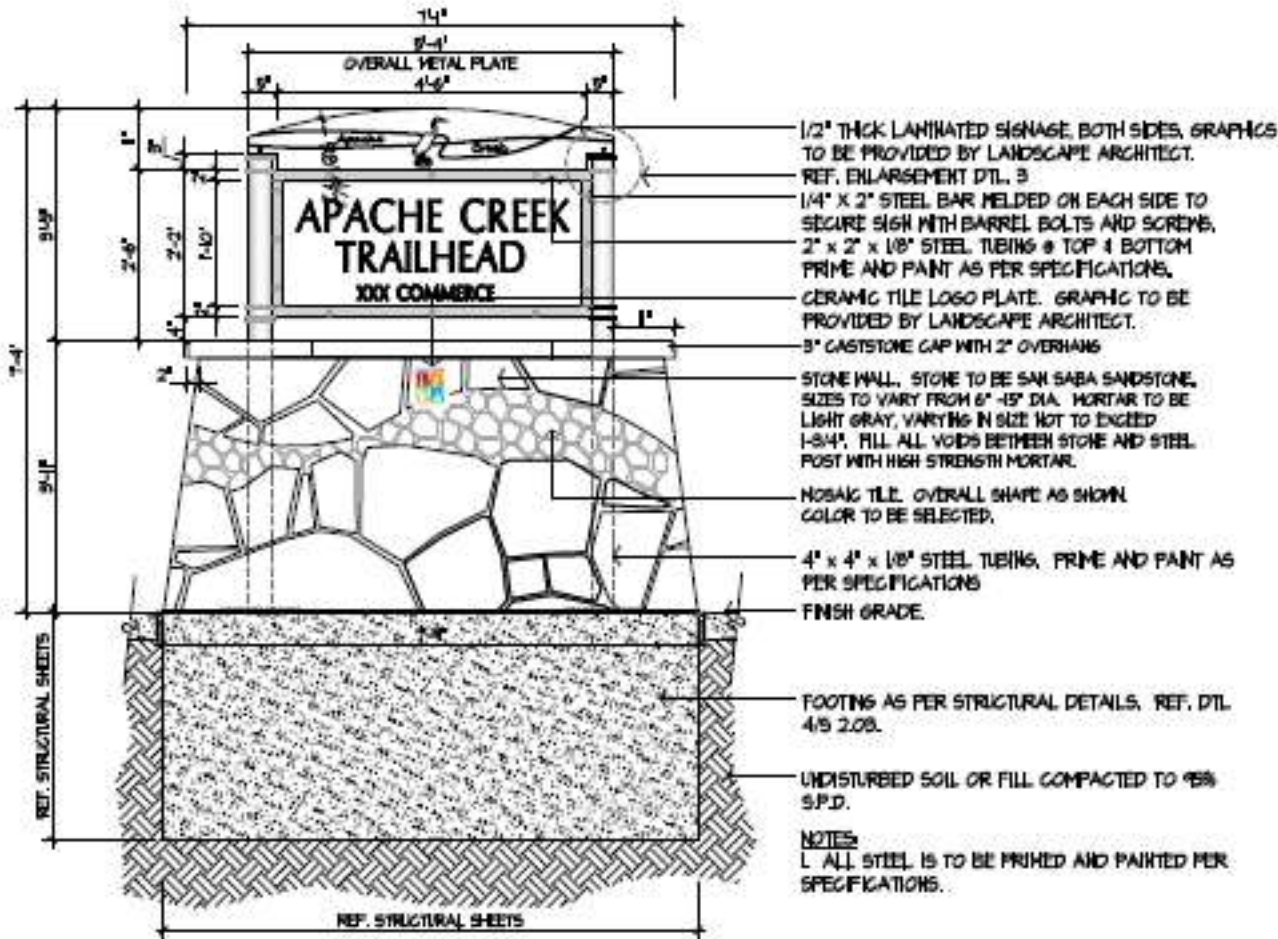
STONE MONUMENT. STONE TO BE ROUND NATIVE LIMESTONE. SIZES VARY FROM 6"-12" LONG BY 4"-8" TALL AND 3"-4" THICK. MORTAR TO BE LIGHT GRAY VARYING IN SIZE NOT TO EXCEED 1-3/4". FILL ALL VOIDS BETWEEN STONE WITH HIGH STRENGTH MORTAR.

FINISH GRADE.

NOTE:

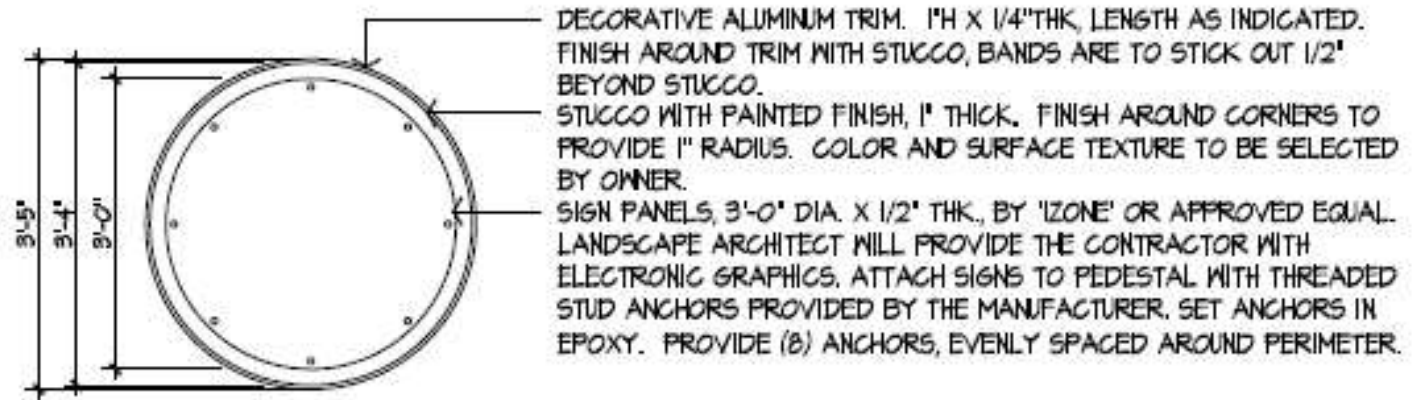
1. REF. DTLS. 3 AND 4/S 2.03 FOR FOOTING AND STRUCTURE DESIGN OF MONUMENT.

Monument / Trail Head Sign Examples



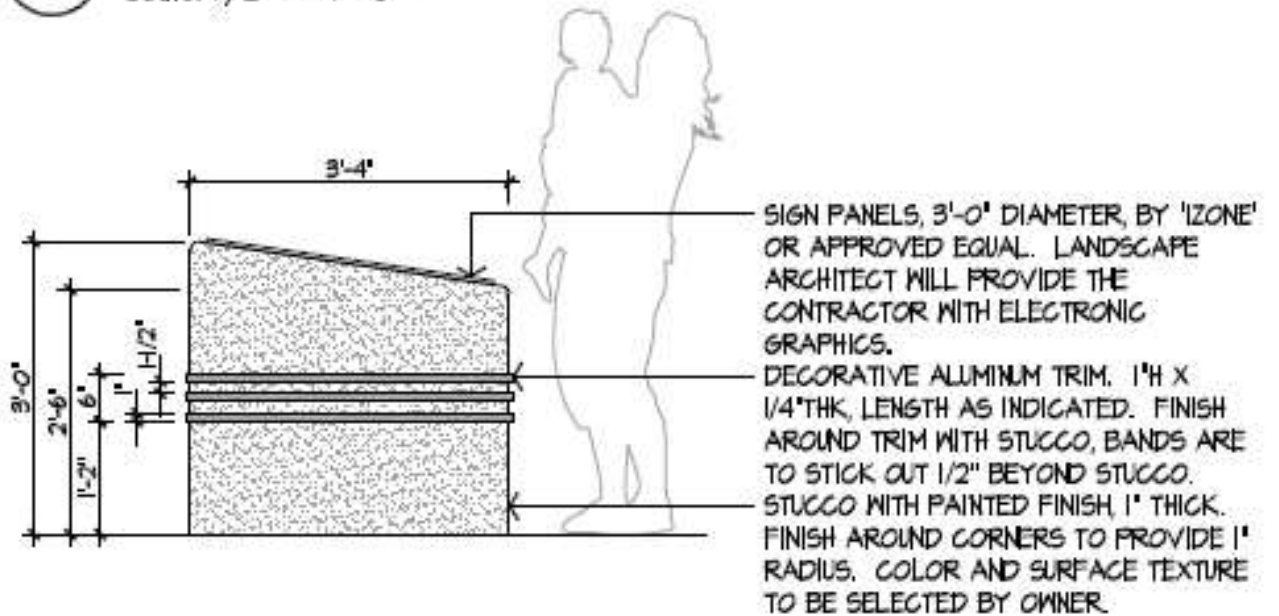
1 ELEVATION: TRAIL HEAD SIGN FRONT
Scale: 1/2" = 1'-0"

Map Sign Examples



4 PLAN: MAP PEDESTAL

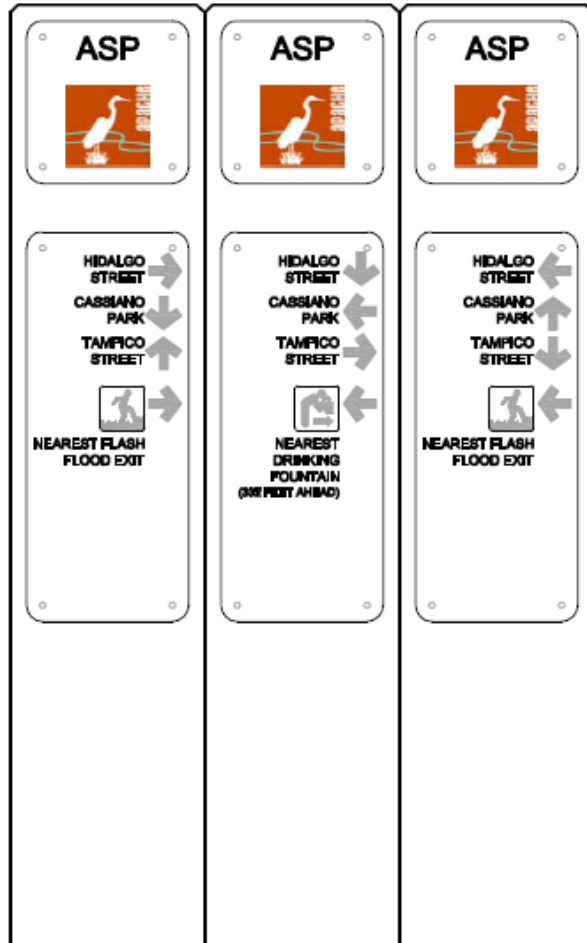
Scale: 1/2" = 1'-0"



5 ELEVATION: MAP PEDESTAL

Scale: 1/2" = 1'-0"

Wayfinding Sign Examples



Interpretative Sign Examples

