





San Pedro Creek Public Workshop Update

Westside Creeks Restoration Oversight
Committee Meeting
10/14/14






Public Workshop #1

Saturday, August 23, 2014

Desired Outcomes:

- Provide the public information on the project.
- Identify desired uses, activities and concerns for the character areas of San Pedro Creek design.



Public Workshop #1



Outreach

- Direct mail ¼ mile radius
- Print and online media
- Chambers and other civic organizations
- Email databases
- Social Media



Public Workshop #1



Attendance

- 93 members of the public
- SA-EN and Rivard Report
- County Judge Wolff
- Commissioner Adkisson
- SARA Board Member Lourdes Galvan



Public Workshop #1

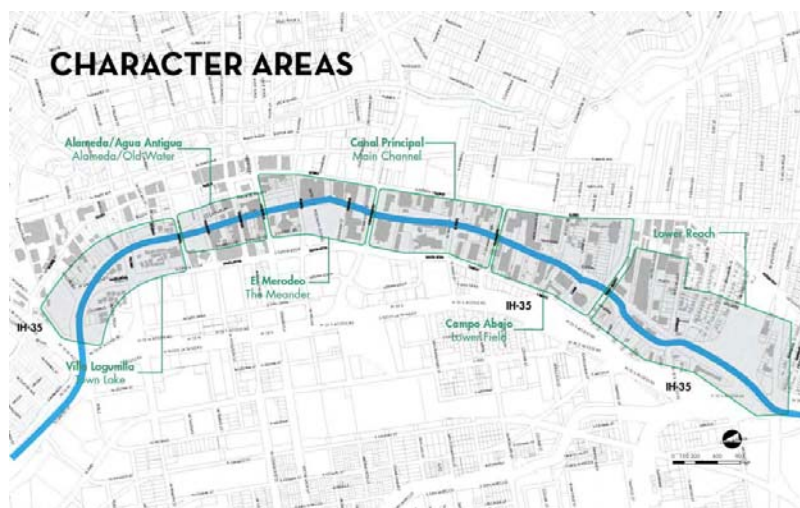


Overview

- Presentation on history, evolution of the initiative, and character areas
- Workshop
 - Table groups
 - 4/6 Character Areas
 - Reports
- Memory Lane



Public Workshop #1



Public Workshop #1



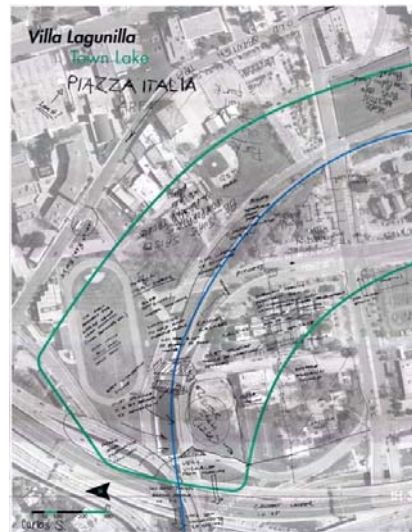
- Desired Uses/Activities
 - Little Italy/Piazza Italia
 - Trailheads/Fitness/Paddling
 - Minor League Baseball/Sports Park
 - Park/Green Space
 - Educational Opportunities
 - Wi-fi
 - Amphitheatre
 - Retail and Food Options
 - Rest and Respite
 - Connection to Fox Tech



Public Workshop #1



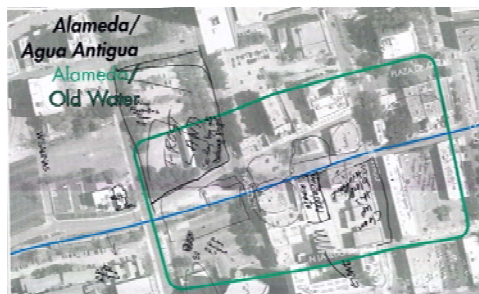
- Concerns
 - I-35/I-10 Barrier
 - Connectivity across creek and to transportation facilities
 - Proximity to Haven for Hope
 - Management of existing housing and businesses
 - Coordination with Weston, SAISD, and private property owners
- Additional Comments
 - Visibility from I-10/I-35
 - Inlet Structure (i.e. Water Gardens, Fort Worth)



Public Workshop #1



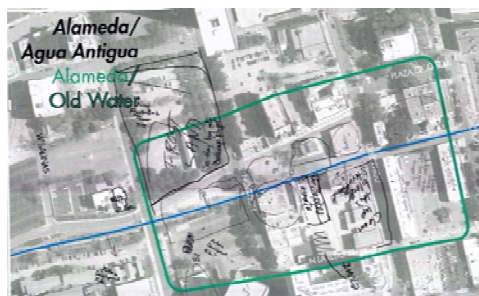
- Desired Uses/Activities
 - Dancehall
 - Passive Uses
 - Cultural District
 - Boating/Fishing
 - Amphitheater
 - Vertical Gardens
 - Student Engagement (Ford Academy)
 - Hike-n-Bike with places to stop
 - Increase Retail and Residential
 - Connection to Mercado, Commerce Street, Alameda, Spanish Governor's Palace



Public Workshop #1



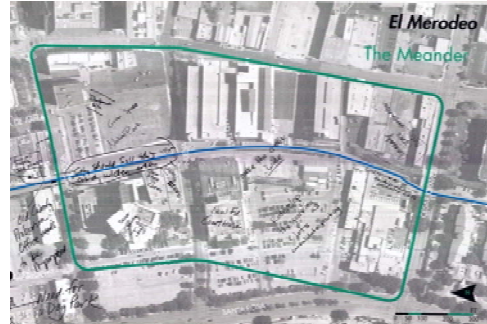
- Concerns
 - Private vs. Public Ownership
 - Linkages to Other Areas
 - Lack of Residential
 - Access from Street to Creek
 - Parking
- Additional Comments
 - Old Spanish Trail Route
 - Maintain height restrictions
 - Call it Alameda y Laredo



Public Workshop #1



- Desired Uses/Activities
 - Creek Access/Views
 - No Commercial on Creek
 - Fishing
 - Parkland/Green Space
 - History Lessons
 - More People and Residents
 - Landscaping
 - Native Plants (River Water Irrigation)
 - Hide Jail
 - Connection to Vistana, Mi Tierra, Mercado, and Casa Navarro



Public Workshop #1



- Concerns
 - Backs of buildings
 - Nothing to draw people
 - Proximity to jail
 - Bill Miller Truck Yard
 - Industrial uses risk
- Additional Comments
 - Parking will be a challenge
 - Tie to Casa Navarro (i.e., Missions to Mission Reach)

