

WESTSIDE CREEKS RESTORATION PROJECT

Westside Creek Restoration
Oversight Committee

June 10, 2014



Trails 1A - Martinez & Alazan Creeks

- **Public Meeting No. 1: May 6, 2013**
- **Public Meeting No. 2: Week of September 9, 2013**
- **Open House: Week of December 9, 2013**
- **95% Construction Documents December 2013**
- **100% Construction Documents June 2013**



Martinez Trail

open house, december 11, 2013



san antonio river authority

terra design group



arcadis

LEGEND



1 TRAIL NODE

- WAYFINDING
- SEATING
- TRAIL CONNECTION TO NEIGHBORHOOD



2 TRAIL HEAD

- SHADED SEATING
- BENCHES
- DRINKING FOUNTAIN
- RESTROOM
- LIGHTING
- WAYFINDING AND INTERPRETIVE SIGNAGE



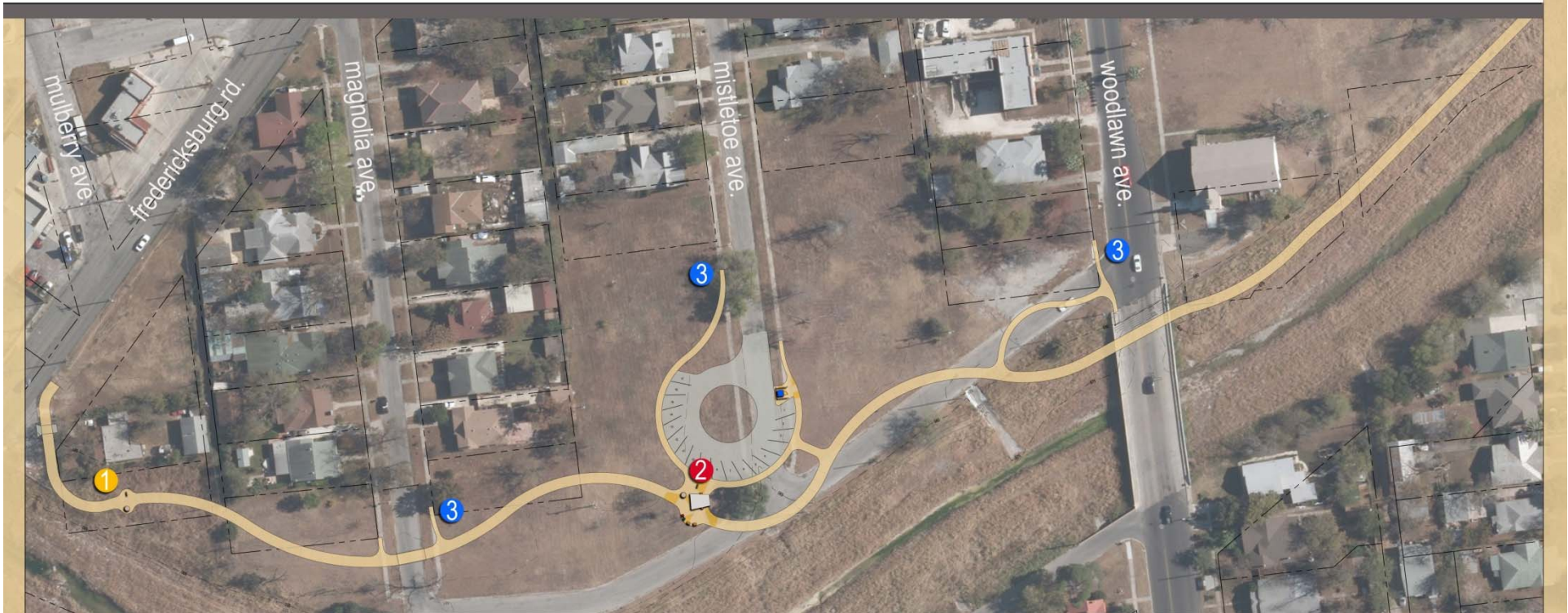
3 NEIGHBORHOOD CONNECTION

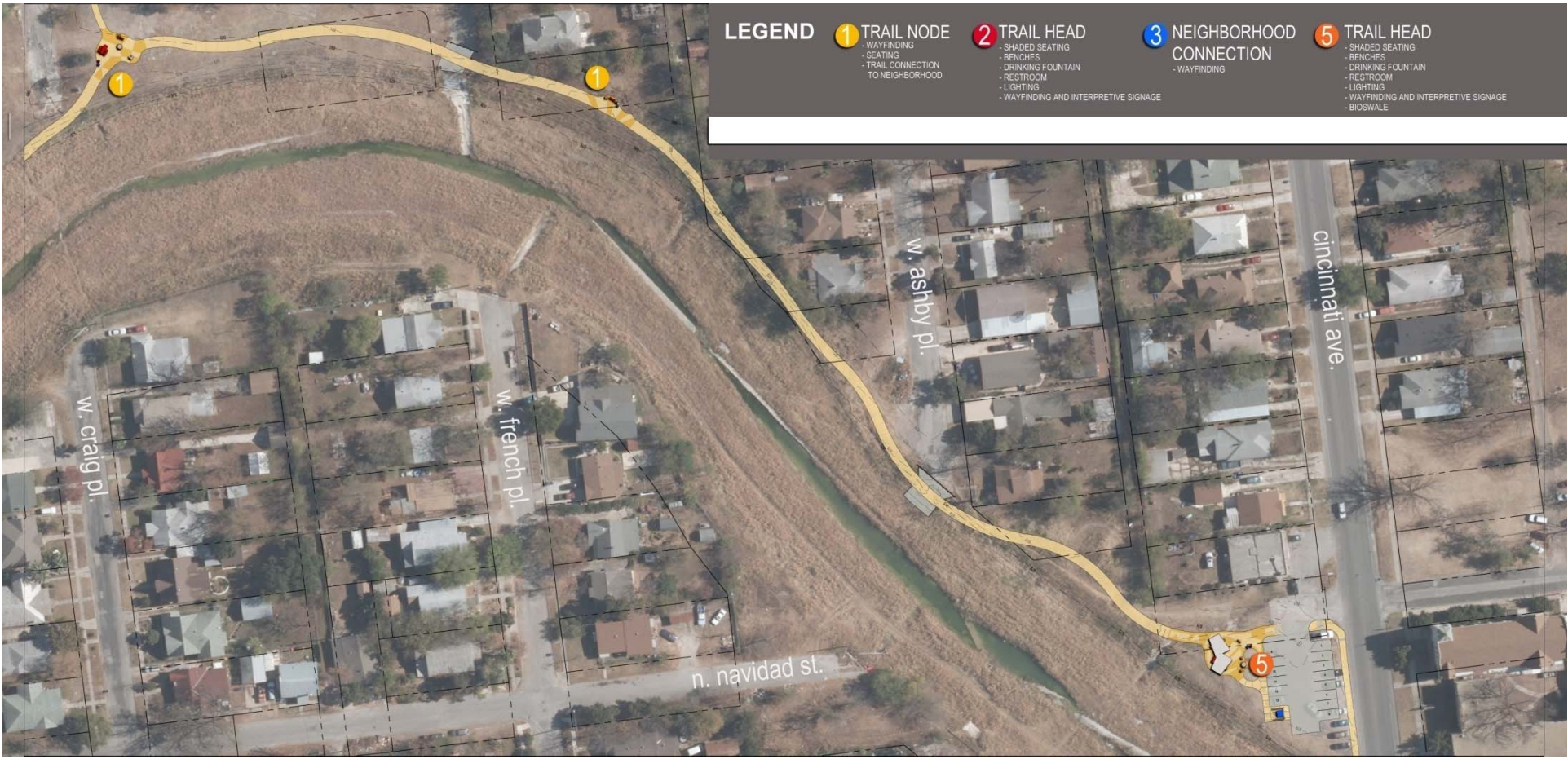
- WAYFINDING



5 TRAIL HEAD

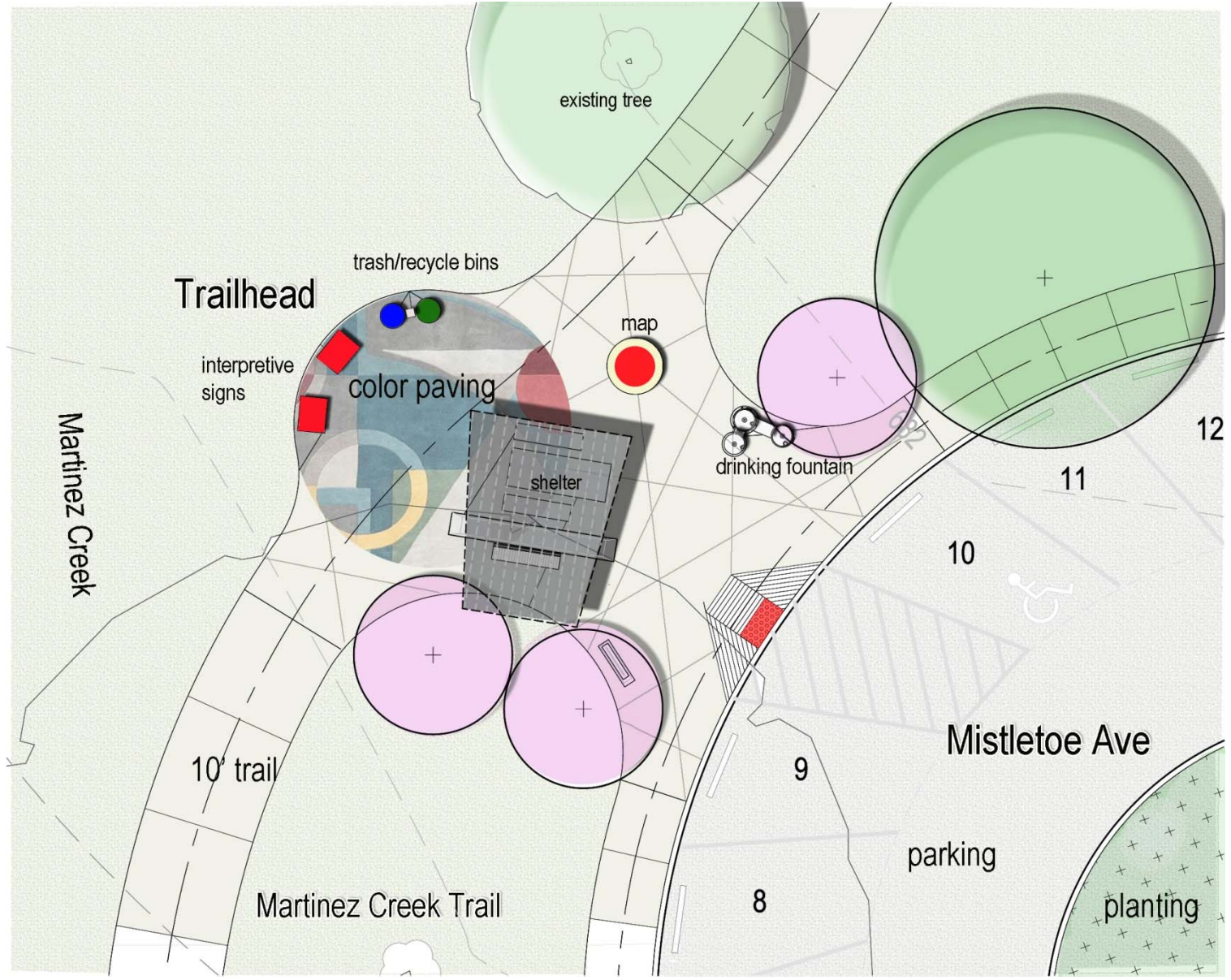
- SHADED SEATING
- BENCHES
- DRINKING FOUNTAIN
- RESTROOM
- LIGHTING
- WAYFINDING AND INTERPRETIVE SIGNAGE
- BIOSWALE

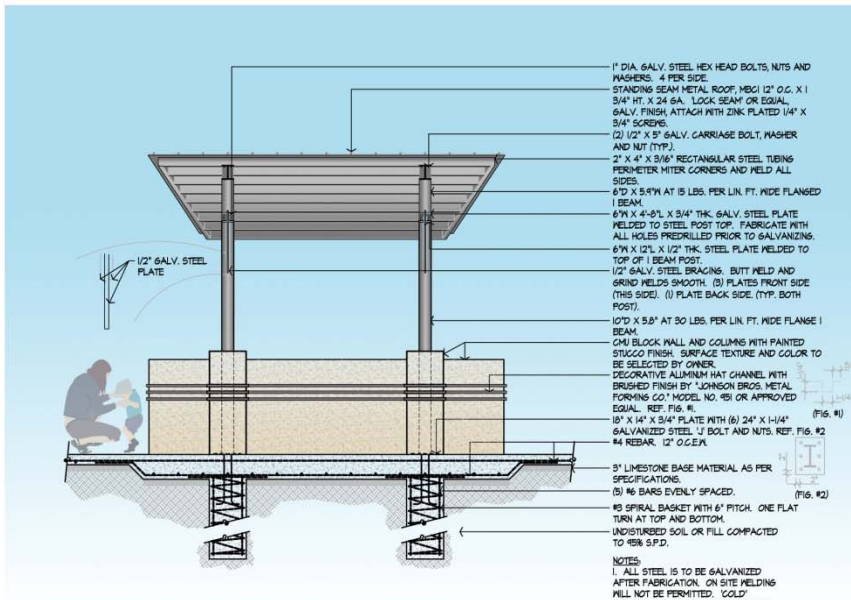




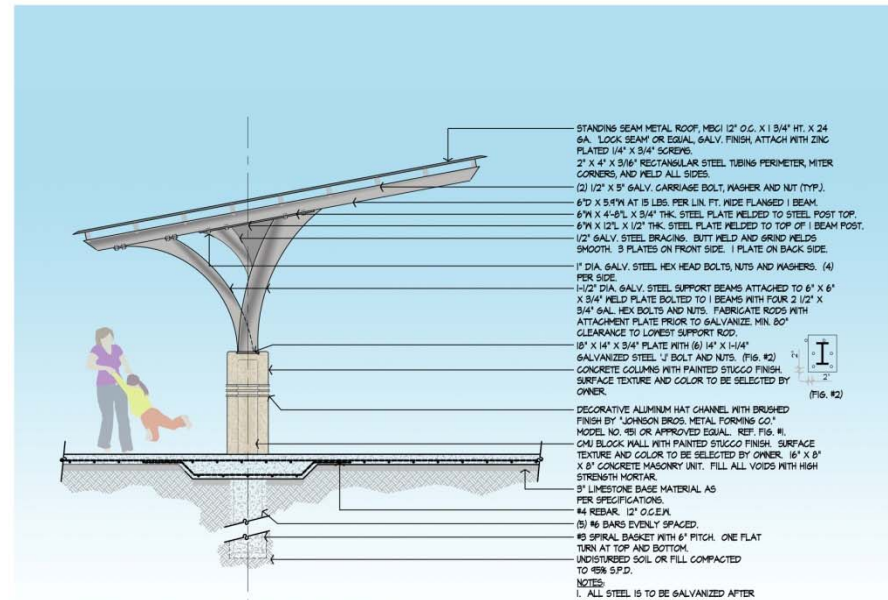
LEGEND

- 1 TRAIL NODE**
 - WAYFINDING
 - SEATING
 - TRAIL CONNECTION TO NEIGHBORHOOD
- 2 TRAIL HEAD**
 - SHADED SEATING
 - BENCHES
 - DRINKING FOUNTAIN
 - RESTROOM
 - LIGHTING
 - WAYFINDING AND INTERPRETIVE SIGNAGE
- 3 NEIGHBORHOOD CONNECTION**
 - WAYFINDING
- 5 TRAIL HEAD**
 - SHADED SEATING
 - BENCHES
 - DRINKING FOUNTAIN
 - RESTROOM
 - LIGHTING
 - WAYFINDING AND INTERPRETIVE SIGNAGE
 - BIOSWALE

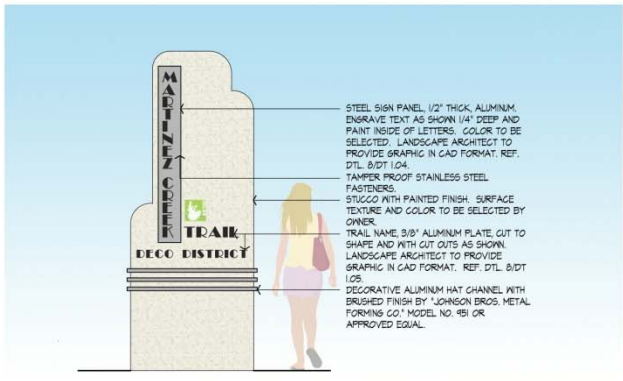




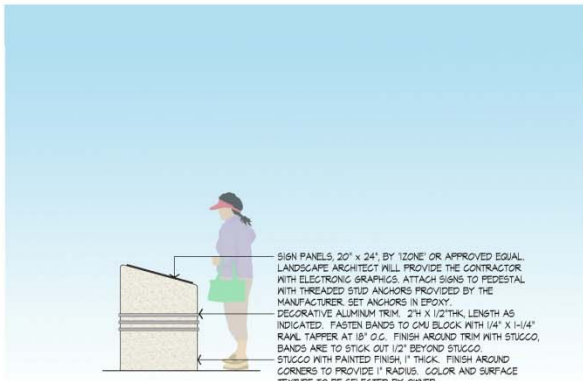
2 SECTION: SHADE STRUCTURE FRONT
 Scale: 3/8" = 1'-0"



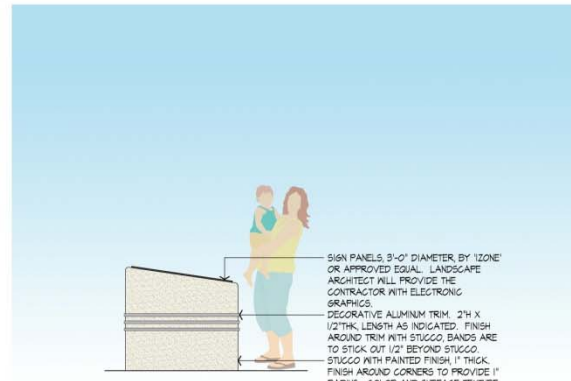
3 SECTION: SHADE STRUCTURE SIDE
 Scale: 3/8" = 1'-0"



8 ELEVATION: LARGE MONUMENT
 Scale: 1/2" = 1'-0"



2 ELEVATION: INTERPRETIVE PEDESTAL
 Scale: 1/2" = 1'-0"



5 ELEVATION: MAP PEDESTAL
 Scale: 1/2" = 1'-0"

Martinez Trail



san antonio river authority



terra design group



arcadis



Alazan Trail

open house, december 11, 2013



san antonio river authority



terra design group



arcadis

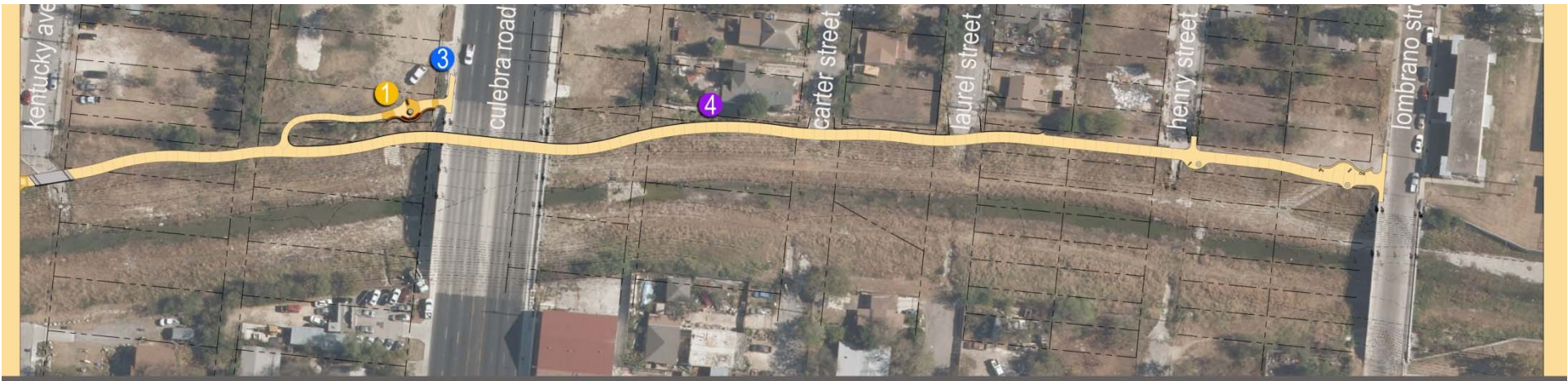
LEGEND

- 1** TRAIL NODE
 - WAYFINDING
 - SEATING
 - TRAIL CONNECTION TO NEIGHBORHOOD

- 2** TRAIL HEAD
 - SHADED SEATING
 - BENCHES
 - DRINKING FOUNTAIN
 - SEATING WALLS
 - LIGHTING
 - WAYFINDING AND INTERPRETIVE SIGNAGE

- 3** NEIGHBORHOOD CONNECTION
 - WAYFINDING

- 4** FUTURE TRAIL AS FUNDING BECOMES AVAILABLE



LEGEND

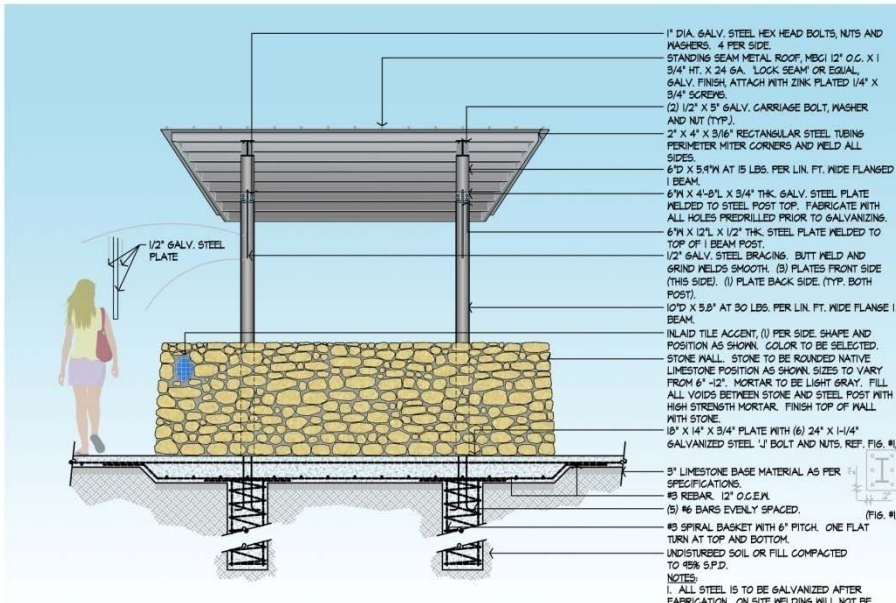
1 TRAIL NODE
- WAYFINDING
- SEATING
- TRAIL CONNECTION TO NEIGHBORHOOD

2 TRAIL HEAD
- SHADED SEATING
- BENCHES
- DRINKING FOUNTAIN
- SEATING WALLS
- LIGHTING
- WAYFINDING AND INTERPRETIVE SIGNAGE

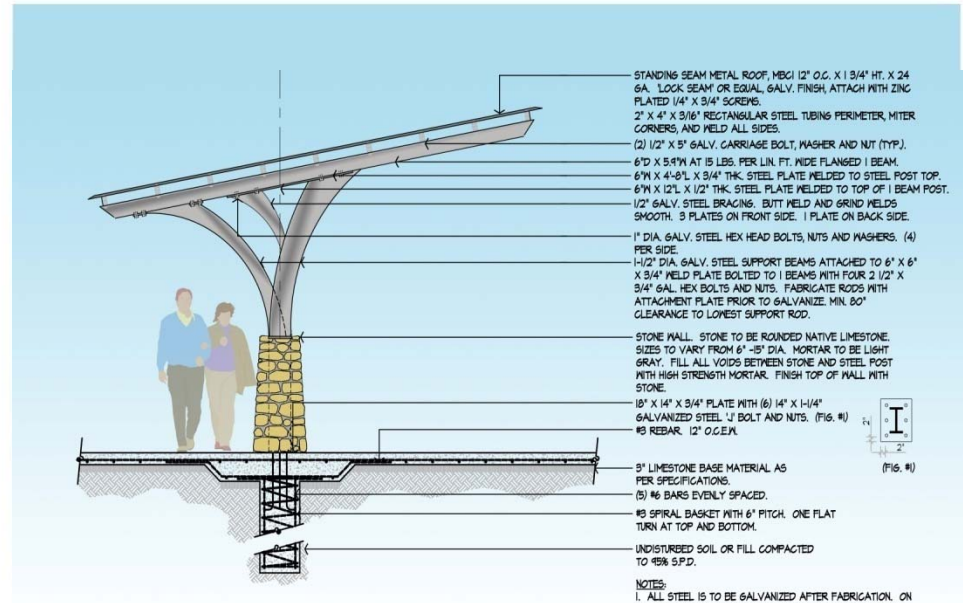
3 NEIGHBORHOOD CONNECTION
- WAYFINDING

4 FUTURE TRAIL AS FUNDING BECOMES AVAILABLE

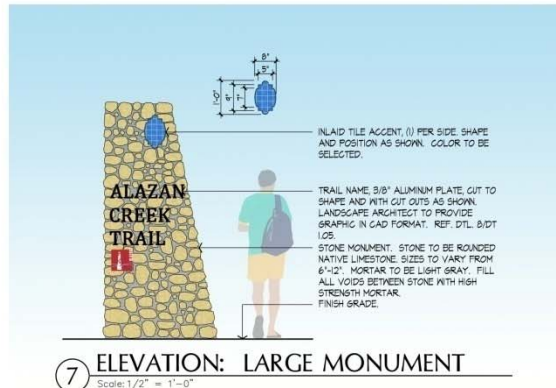




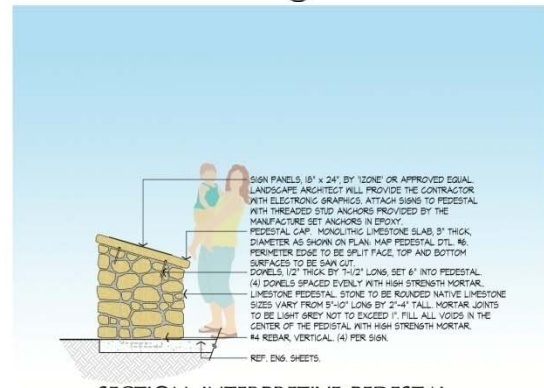
2 SECTION: SHADE STRUCTURE FRONT
Scale: 3/8" = 1'-0"



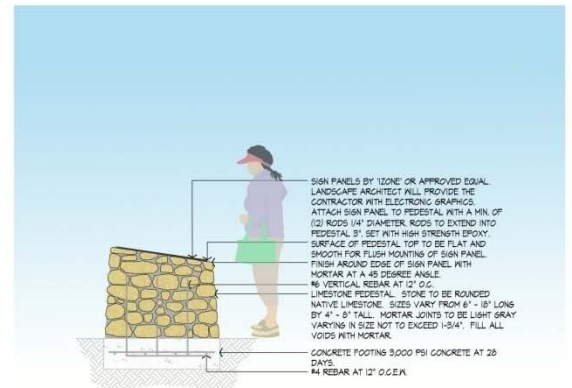
3 SECTION: SHADE STRUCTURE SIDE
Scale: 3/8" = 1'-0"



7 ELEVATION: LARGE MONUMENT
Scale: 1/2" = 1'-0"



2 SECTION: INTERPRETIVE PEDESTAL
Scale: 1/2" = 1'-0"



4 SECTION: MAP PEDESTAL
Scale: 1/2" = 1'-0"

Alazan Trail

Trails 1B - Apache Creek (Downstream of Elmendorf Lake Park) San Pedro Creek

- **Public Meeting No. 1: June 5, 2013**
- **Public Meeting No. 2: Week of October 7, 2013**
- **Open House: Week Of April 3, 2014**
- **95% Construction Documents March 2014**
- **100% Construction Documents June 2013**





Apache Creek And San Pedro Creek Trail

LEGEND

- 1 TRAIL NODE**
 - TRAILHEAD SIGNAGE
 - TRAIL MAP PEDESTAL
 - INTERPRETIVE PEDESTAL
 - PARK RULES SIGNAGE
 - SHADE STRUCTURE
 - PICNIC TABLE
 - BIKE RACK

- 2 TRAIL HEAD**
 - PARKING LOT
 - TRAILHEAD SIGNAGE
 - TRAIL MAP PEDESTAL
 - INTERPRETIVE PEDESTAL
 - SHADE STRUCTURE
 - PICNIC TABLE
 - BIKE RACK

- 3 BELOW STREET CROSSING**

- 4 BELOW TRAIN TRACK CROSSING**

- 5 PETER REED BASEBALL FIELD**

- 6 NEIGHBORHOOD CONNECTION**

- 7 AT STREET CORSSING**



open house, april 3, 2014



san antonio river authority

terra design group



arcadis



LEGEND

- | | | |
|--|--|---|
| <p>1 TRAIL NODE</p> <ul style="list-style-type: none"> - TRAIL HEAD SIGNAGE - TRAIL MAP PEDESTAL - INTERPRETIVE PEDESTAL - PARK RULES SIGNAGE - SHADE STRUCTURE - PICNIC TABLE - BIKE RACK | <p>3 BELOW STREET CROSSING</p> | <p>6 NEIGHBORHOOD CONNECTION</p> |
| <p>2 TRAIL HEAD</p> <ul style="list-style-type: none"> - PARKING LOT - TRAIL HEAD SIGNAGE - TRAIL MAP PEDESTAL - INTERPRETIVE PEDESTAL - SHADE STRUCTURE - PICNIC TABLE - BIKE RACK | <p>4 BELOW TRAIN TRACK CROSSING</p> | <p>7 AT STREET CORSSING</p> |
| <p>5 PETER REED BASEBALL FIELD</p> | | |



open house, april 3, 2014



san antonio river authority

terra design group



ARCADIS



LEGEND

- | | | |
|--|--|--|
| <p>1 TRAIL NODE
 - TRAILHEAD SIGNAGE
 - TRAIL MAP PEDESTAL
 - INTERPRETIVE PEDESTAL
 - PARK RULES SIGNAGE
 - SHADE STRUCTURE
 - PICNIC TABLE
 - BIKE RACK</p> | <p>3 BELOW STREET CROSSING</p> <p>4 BELOW TRAIN TRACK CROSSING</p> <p>5 PETER REED BASEBALL FIELD</p> | <p>6 NEIGHBORHOOD CONNECTION</p> <p>7 AT STREET CORSSING</p> |
| <p>2 TRAIL HEAD
 - PARKING LOT
 - TRAILHEAD SIGNAGE
 - TRAIL MAP PEDESTAL
 - INTERPRETIVE PEDESTAL
 - SHADE STRUCTURE
 - PICNIC TABLE
 - BIKE RACK</p> | | |



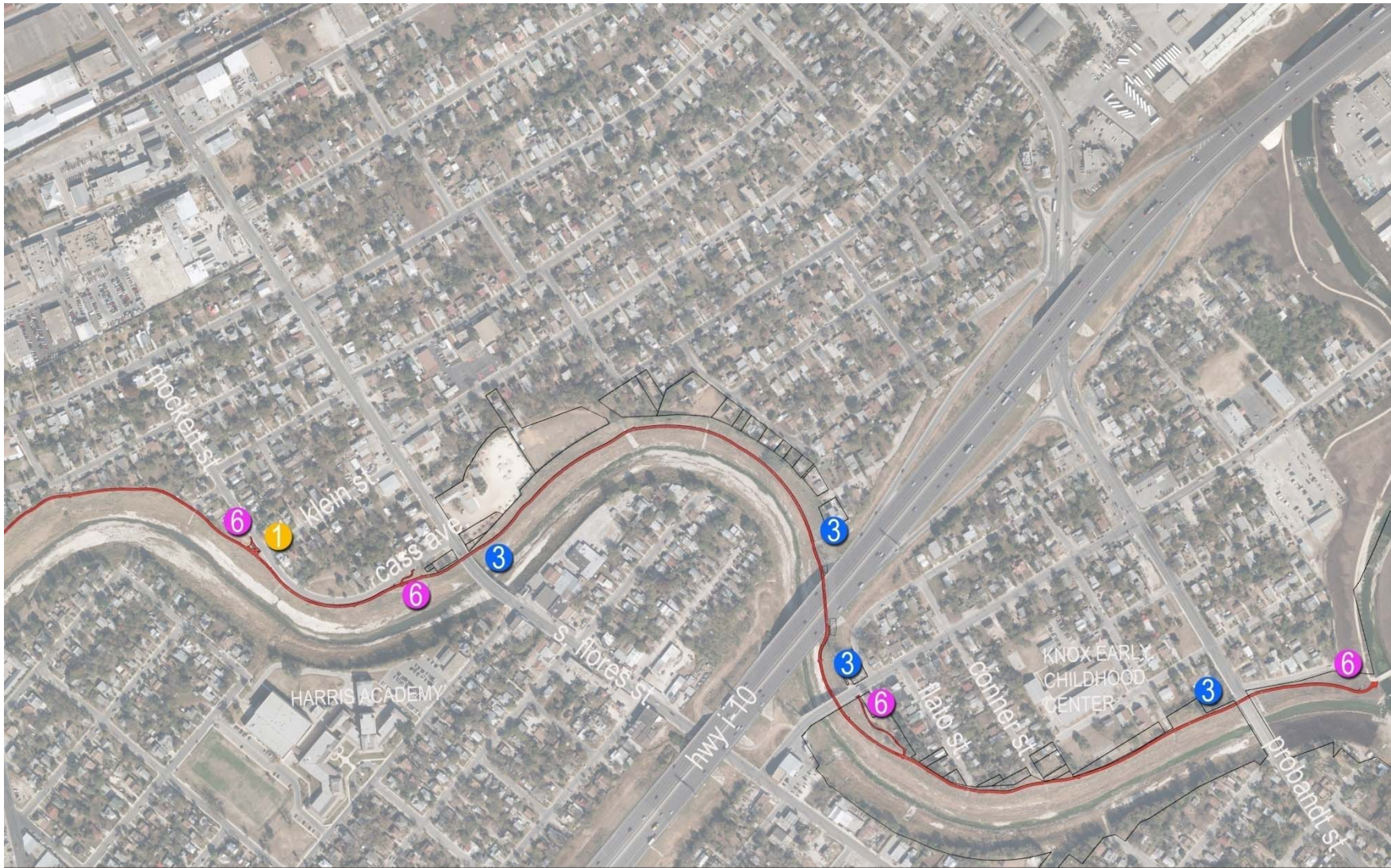
open house, april 3, 2014



san antonio river authority



arcadis



LEGEND

- 1** TRAIL NODE
 - TRAILHEAD SIGNAGE
 - TRAIL MAP PEDESTAL
 - INTERPRETIVE PEDESTAL
 - PARK RULES SIGNAGE
 - SHADE STRUCTURE
 - PICNIC TABLE
 - BIKE RACK
- 2** TRAIL HEAD
 - PARKING LOT
 - TRAILHEAD SIGNAGE
 - TRAIL MAP PEDESTAL
 - INTERPRETIVE PEDESTAL
 - SHADE STRUCTURE
 - PICNIC TABLE
 - BIKE RACK

- 3** BELOW STREET CROSSING

- 4** BELOW TRAIN TRACK CROSSING

- 6** NEIGHBORHOOD CONNECTION

- 7** AT STREET CORSSING

- 8** LOW WATER CROSSING



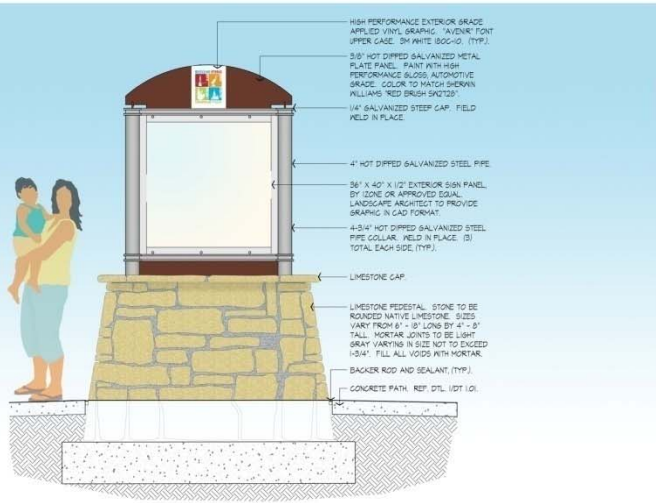
open house, april 3, 2014



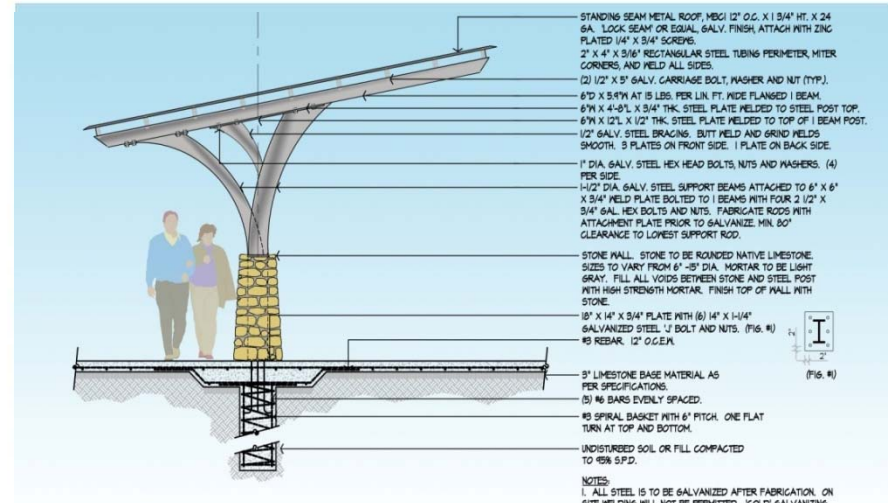
san antonio river authority



arcadis

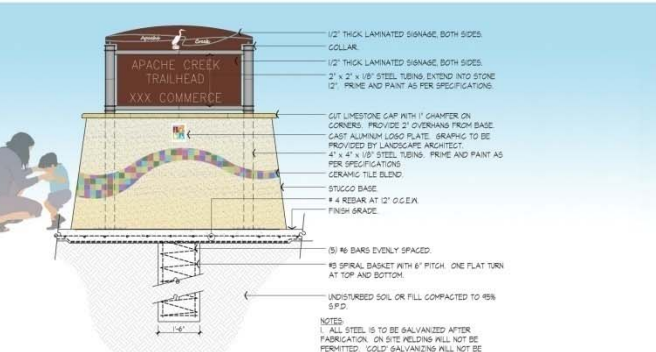


ELEVATION: INTERPRETIVE PEDESTAL

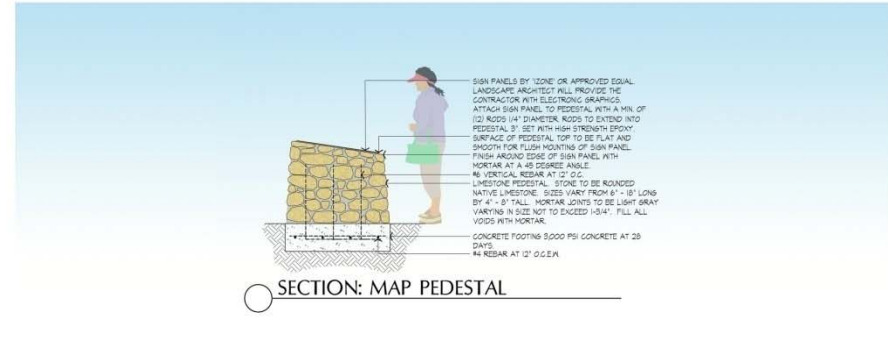


SECTION: SHADE STRUCTURE SIDE

Scale: 3/8" = 1'-0"



ELEVATION: TRAIL HEAD SIGN FRONT



SECTION: MAP PEDESTAL

Apache Creek And San Pedro Creek Trail



san antonio river authority



terra design group



arcadis



parking

existing trees typ.

color paving

Apache Creek Trail

shelter

mile marker

Trail Head

6' wide trail access

10' trail

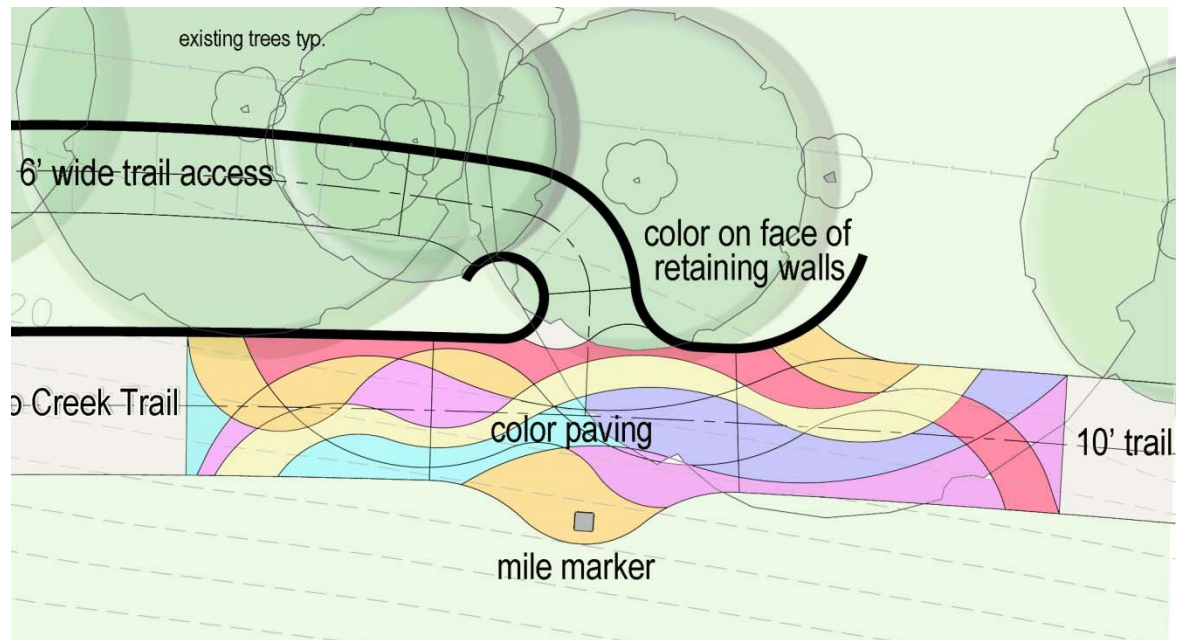
Trails Sections

Concrete Retaining Wall





Art Deco Painted Retaining Wall



Elmendorf Lake Park

- **Public Meeting No. 3: May 13, 2013**
- **95% Construction Documents June 2014**
- **100% Construction Documents August 2014**
- **Final Public Meeting to be Scheduled**





COMMERCE

SW 24TH

NW 21ST

NW 20TH

NW 19TH

BUENA VISTA

SHORE

MONTEREY

OUR LADY OF THE LAKE UNIVERSITY

CESAR E. CHAVEZ

SAUNDER

 **ELMENDORF LAKE PARK**

3.10.14









