

# Westside Creeks Restoration Oversight Committee Meeting

Westside Creeks



restoration project



CITY OF SAN ANTONIO  
PARKS & RECREATION



SAN ANTONIO  
RIVER AUTHORITY  
Leaders in Watershed Solutions

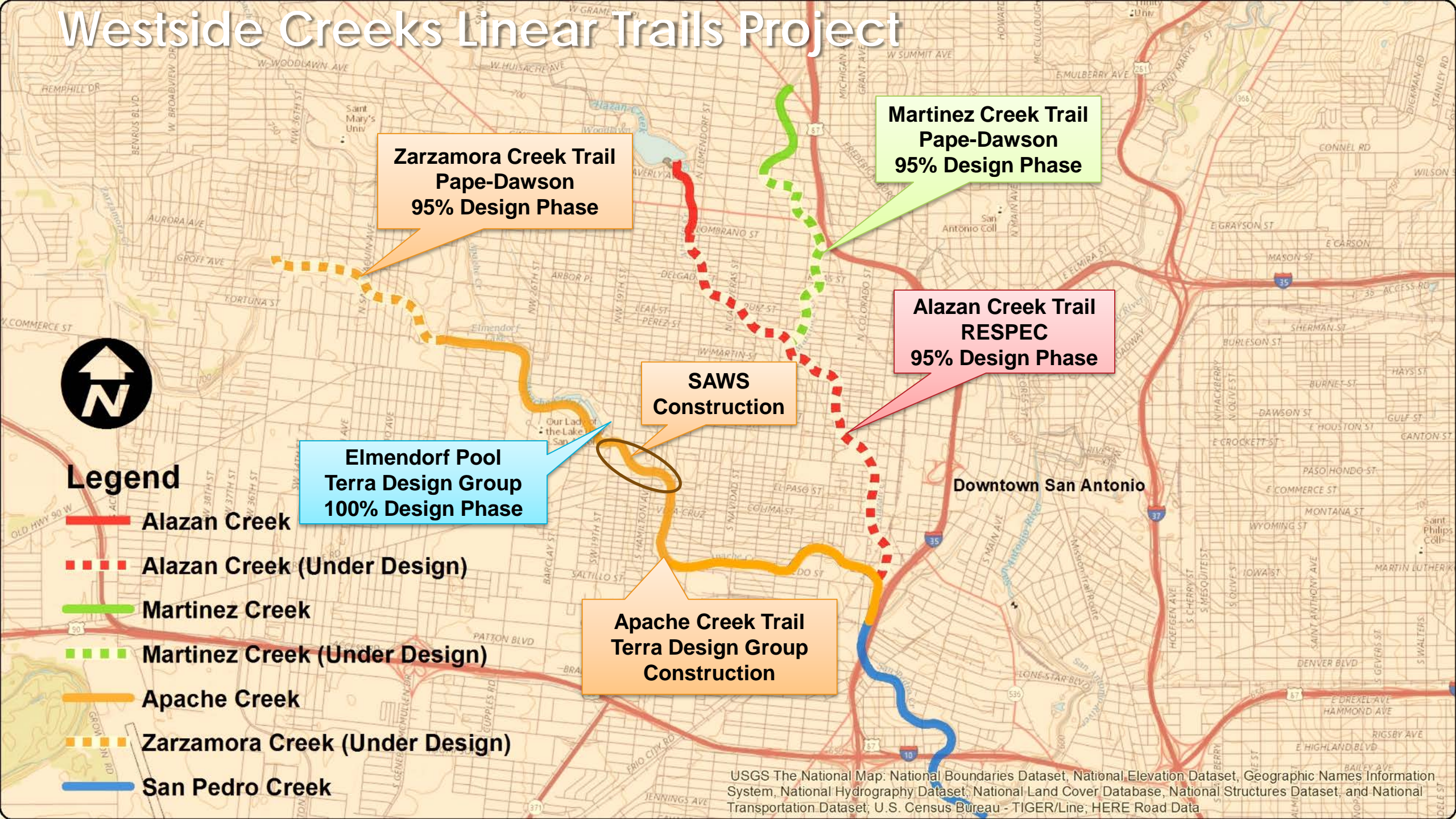
## Linear Creekway Trails and Elmendorf Lake Park

SARA: Reuben Bazan, Richard De La Cruz, P.E., Hillary Lilly

August 21, 2018



# Westside Creeks Linear Trails Project



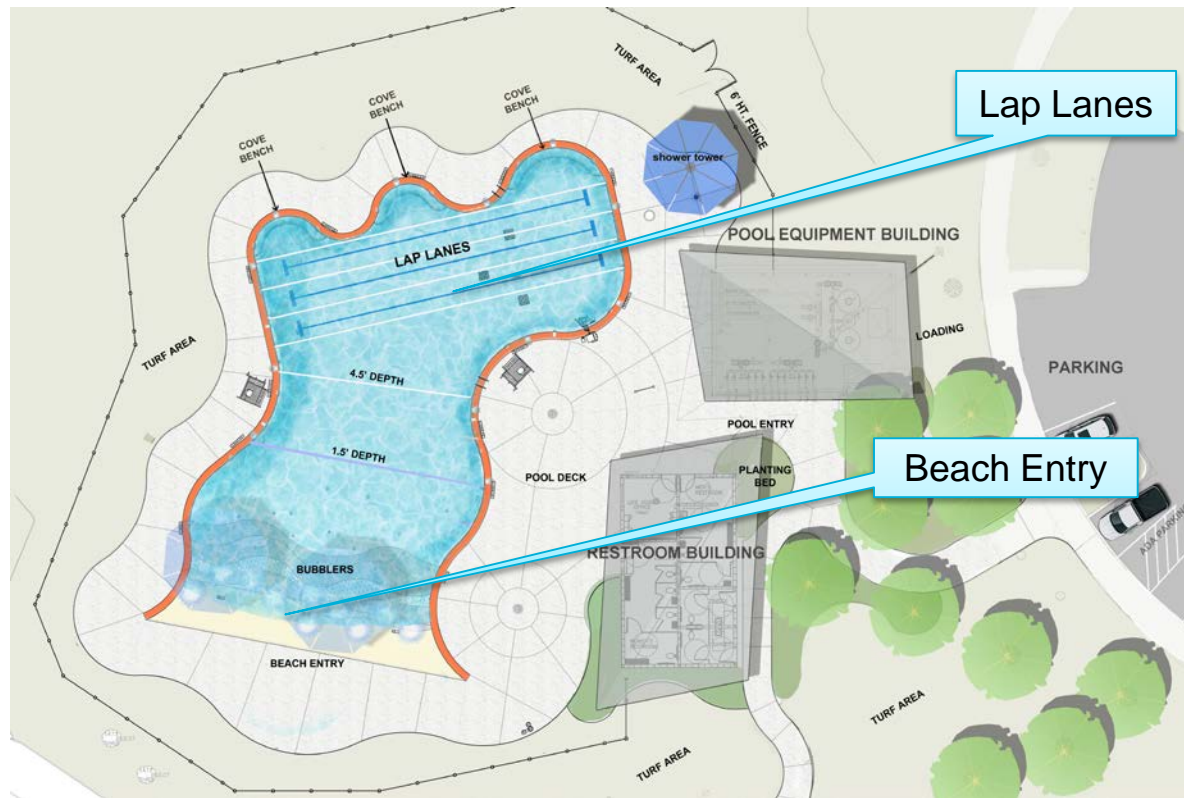


# ELMENDORF POOL LAYOUT



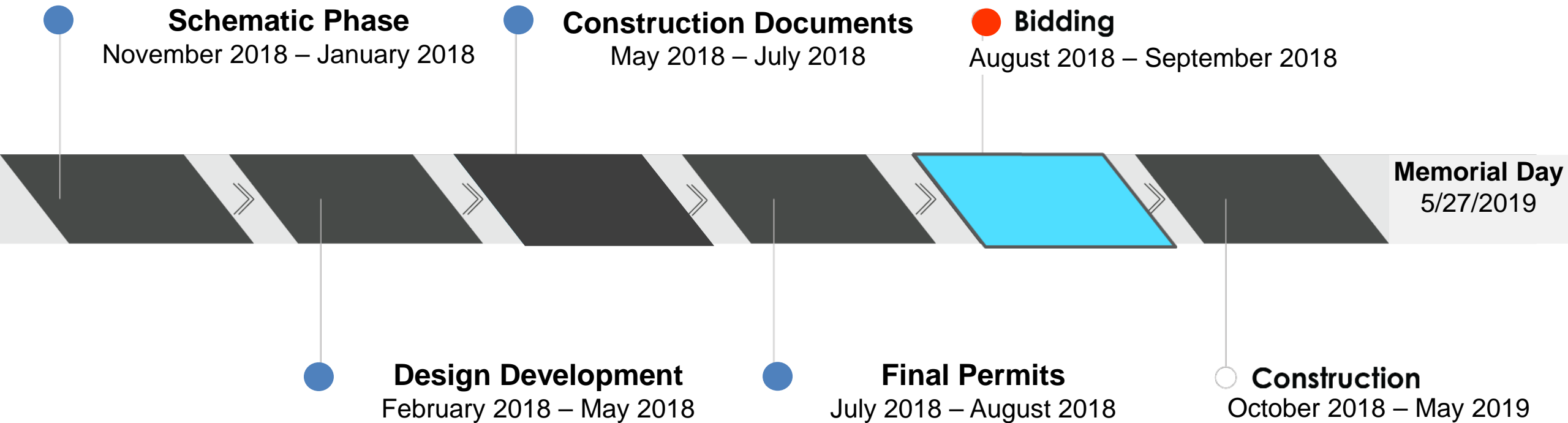


# ELMENDORF POOL IMPROVEMENTS



- Funded by the City of San Antonio through the 2017 Bond Program Funding
- Managed by the San Antonio River Authority
- Features a beach entrance in the pool
- Swimming area with three 25m lap lanes
- Pool area 5,068 square feet
- Restrooms with changing stalls
- Seating areas around pool
- Canopies surrounding pool

# ELMENDORF POOL SCHEDULE



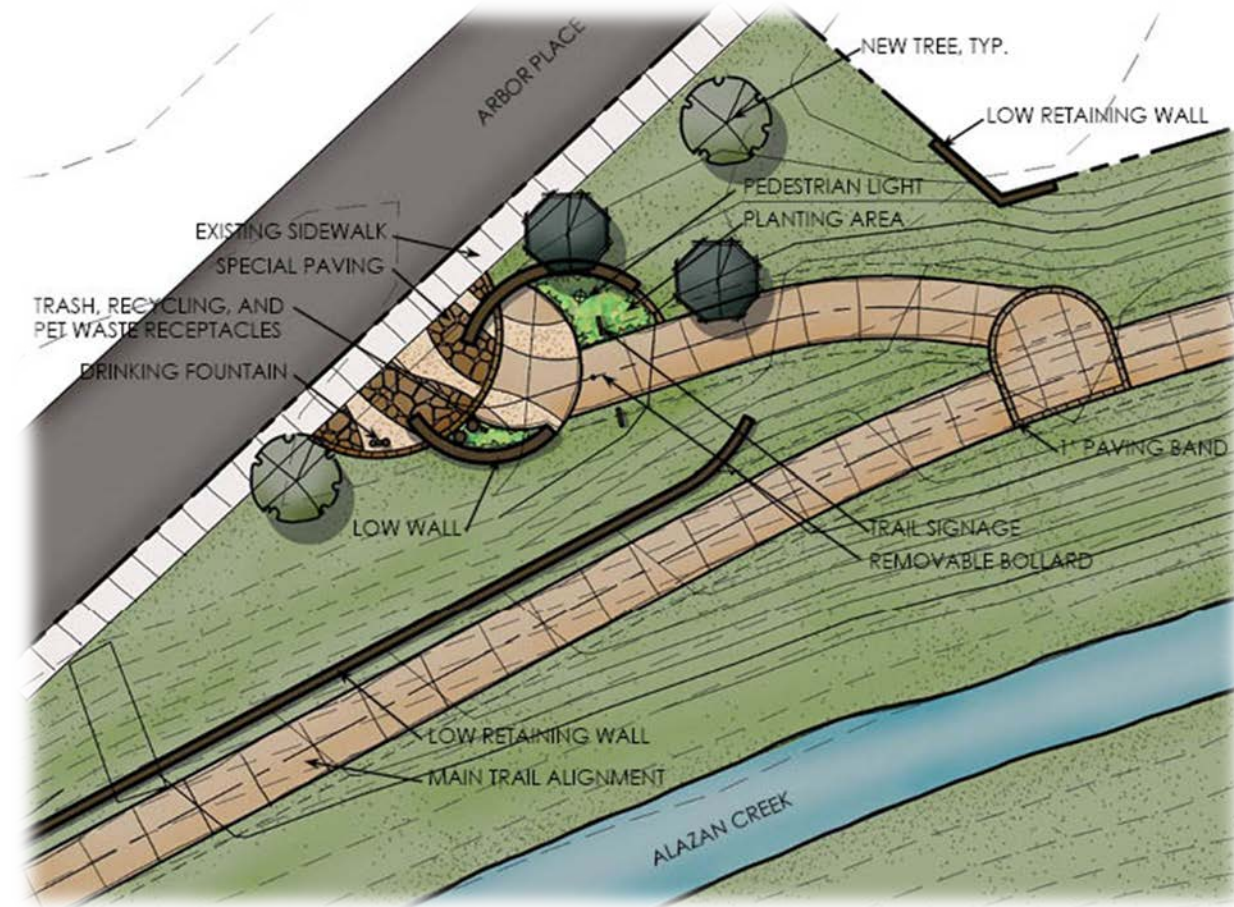
# ALAZAN CREEK TRAIL OVERVIEW

- 2.9 mile long – 10' wide concrete hike & bike trail from Lombrano St. to confluence at Apache creek
- 95% Design – Completed July 2018
- **USACE and Union Pacific Railroad authorization is pending.**
- **CPS Energy construction coordination is on-going.**
- **Federal funding for construction through TxDOT has been authorized.**
- **100% Design – due 29 Aug 2018**
- **Anticipated bid award – Late 2018**
- **Anticipated construction – Early 2019**



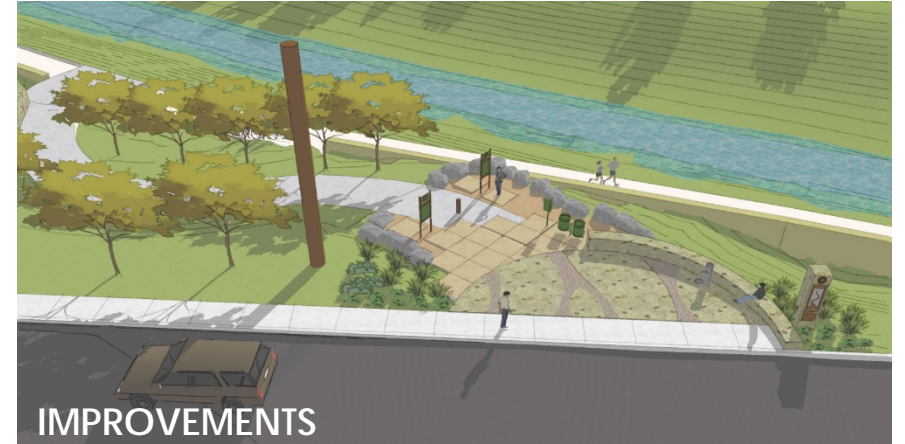
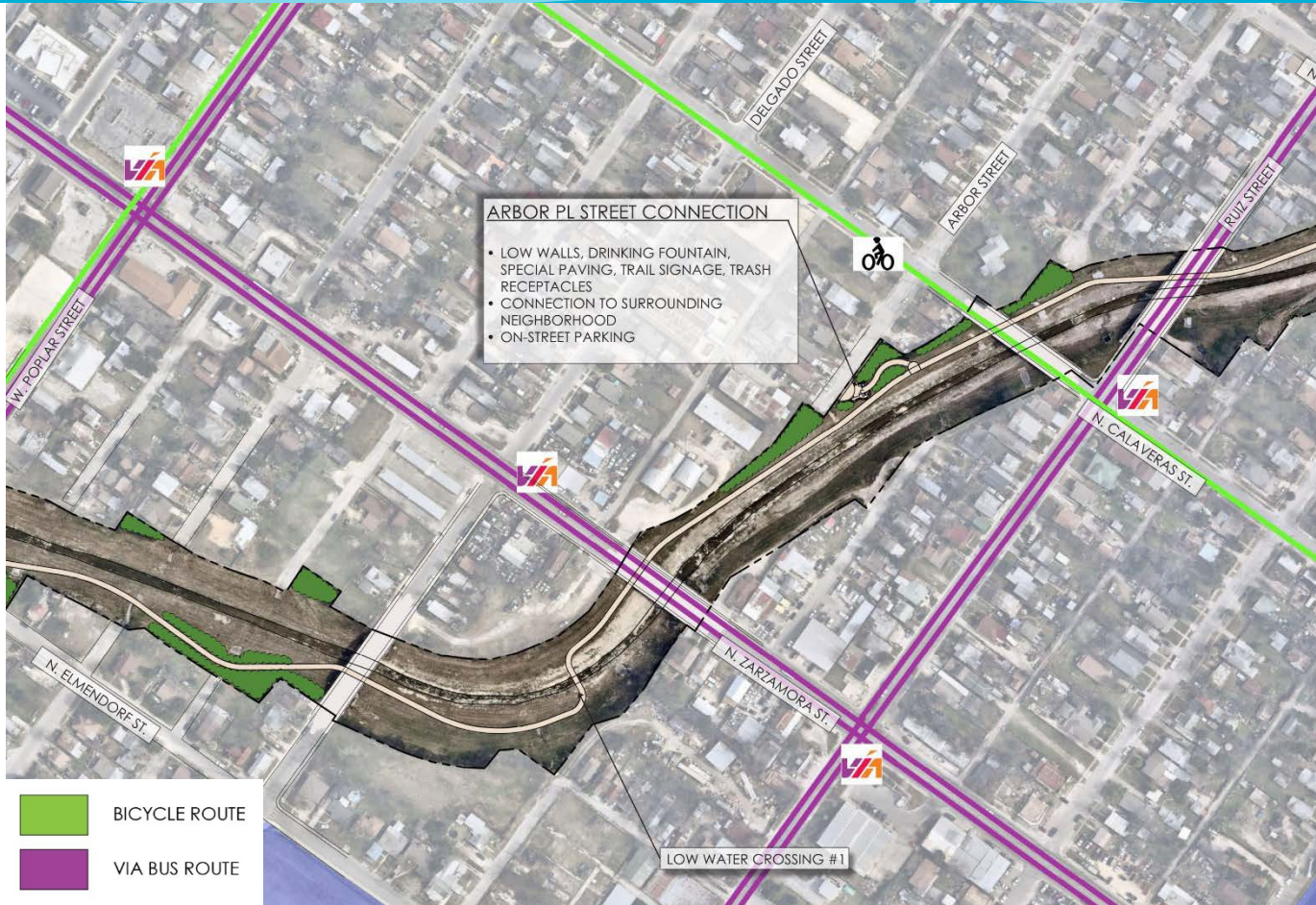
# ALAZAN CREEK TRAIL STREET CONNECTIONS

- Provides access points to the trail for the community
- Connects to existing and proposed landmarks
  - schools
  - parks
- Provides areas for rest and shade
- Reduces bicycle traffic at streets
- Provides bi-lingual signage with interpretive elements, wayfinding and trail rules





# ARBOR STREET CONNECTION









# MARTINEZ CREEK TRAIL OVERVIEW

- 1.45 mile long – 10' wide concrete hike & bike trail from Cincinnati St. to confluence of Alazan Creek
- 95% Design – Completed June 2018
- **USACE Coordination on-going**
- **100% Design Due – 29 Aug 2018**
- **Anticipated Bid Award – Late 2019**
- **Anticipated Start of Construction – Early 2020**





# MARTINEZ CREEK GENERAL DESIGN ITEMS

- TRAIL DETAILS

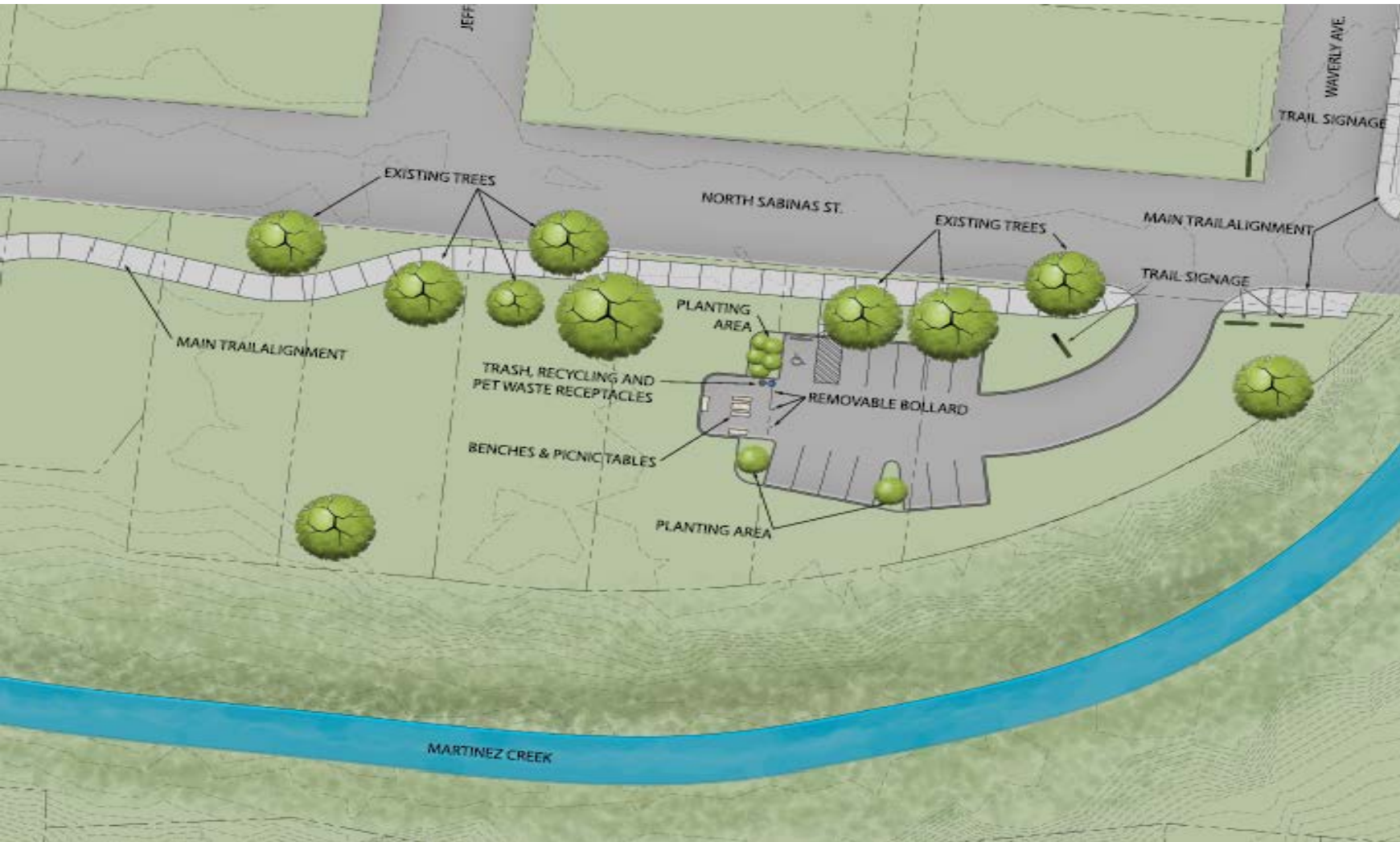
- 8 Street Connections with 4 Trail heads (One Trail head in base bid, all others are Add Alternates in bid package.)
- Approximately 3,720 lf of retaining walls along the trail
- Typical 8' head clearance under bridges (Minimum)
- Three Low Water Crossings
- Flood study completed and there are no impacts due to project.





# MARTINEZ CREEK TRAIL

## N SABINAS ST TRAILHEAD (Base Bid)



- Provide access points
- Connect to landmarks
  - Schools
  - Parks
  - Public buildings
- Provide areas of rest
- Safety
- Easy to navigate



# MARTINEZ CREEK TRAIL



UNIVERSITY AVE CONNECTION  
(add alternate)



# MARTINEZ CREEK TRAIL



TRAIL REST STOP  
(add alternate)

# ZARZAMORA CREEK TRAIL OVERVIEW

- Phase I – Approx. 1.0 Miles long – 10' wide concrete hike & bike trail from 29<sup>th</sup> Street to Memorial St.
- Phase II – Approx. 0.45 miles long – 10' wide concrete hike & bike trail from Memorial St. to Alderete Park (add alternate)
- 95% Design – Completed June 2018
- **100% Design – Due 29 Aug 2018**
- **Anticipated Bid Award – Late 2018**
- **Anticipated Start of Construction – January 2019**





# ZARZAMORA CREEK GENERAL DESIGN ITEMS

- TRAIL DETAILS

- 8 Street Connections (1 Trail Head)
- Approx. 3,540 lf of retaining walls along the trail
- Typical 8' head clearance under bridges (Minimum)
- Two Low Water Crossings
- Flood study completed and there are no impacts due to project.
- Bridge Crossing at 29<sup>th</sup> St.



CITY OF SAN ANTONIO  
PARKS & RECREATION



SAN ANTONIO  
RIVER AUTHORITY  
Leaders in Watershed Solutions



# SAN IGNACIO TRAILHEAD



- Provide access points
- Connect to landmarks
  - Schools
  - Parks
  - Public buildings
- Provide areas of rest
- Safety
- Easy to navigate



# ZARZAMORA CREEK @ GEN McMULLEN DR.



# SAN IGNACIO TRAILHEAD



# ZARZAMORA CREEK

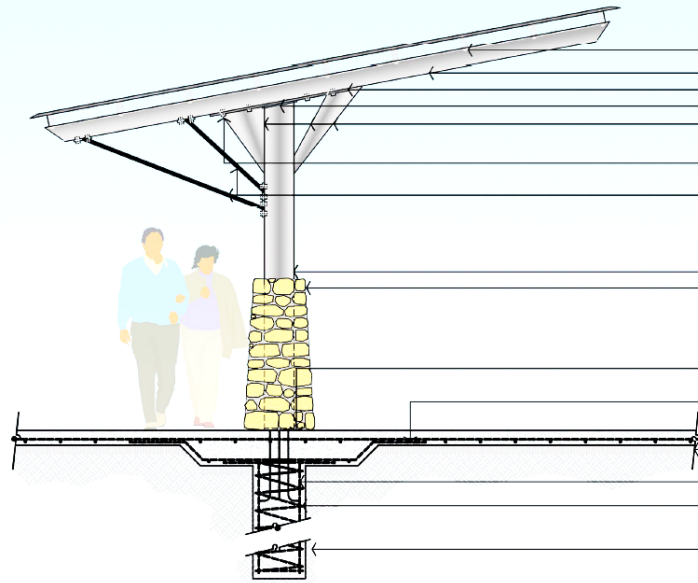
29<sup>th</sup> STREET



Ximenes & Associates, Inc.



# AMENITIES



- STANDING SEAM METAL ROOF, MBSI 12" O.C. X 1 3/4" HT. X 24 GA. "LOCK SEAM" OR EQUAL, GALV. FINISH, ATTACH WITH ZINC PLATED 1/4" X 3/4" SCREWS.
  - 2" X 4" X 3/16" RECTANGULAR STEEL TUBING PERIMETER, MITER CORNERS, AND WELD ALL SIDES.
  - (2) 1/2" X 5" GALV. CARRIAGE BOLT, WASHER AND NUT (TYP.).
  - 6"D X 5.9" M AT 15 LBS. PER LIN. FT. WIDE FLANGED I BEAM.
  - 6" M X 4'-0" L X 3/4" THK. STEEL PLATE WELDED TO STEEL POST TOP.
  - 6" M X 12" L X 1/2" THK. STEEL PLATE WELDED TO TOP OF I BEAM POST.
  - 1/2" GALV. STEEL BRACINGS. BUTT WELD AND GRIND WELDS SMOOTH. 3 PLATES ON FRONT SIDE. 1 PLATE ON BACK SIDE.
  - 1" DIA. GALV. STEEL HEX HEAD BOLTS, NUTS AND WASHERS. (4) PER SIDE.
  - 1-1/2" DIA. GALV. STEEL SUPPORT ROD ATTACHED TO 6" X 6" X 3/4" WELD PLATE BOLTED TO I BEAMS WITH FOUR 2 1/2" X 3/4" GAL. HEX BOLTS AND NUTS. FABRICATE RODS WITH ATTACHMENT PLATE PRIOR TO GALVANIZE. MIN. 80" CLEARANCE TO LOWEST SUPPORT ROD.
  - 10"D X 5.0' AT 30 LBS. PER LIN. FT. WIDE FLANGE I BEAM STONE WALL. STONE TO BE ROUNDED NATIVE LIMESTONE SIZES TO VARY FROM 6" -15" DIA. MORTAR TO BE LIGHT GRAY. FILL ALL VOIDS BETWEEN STONE AND STEEL POST WITH HIGH STRENGTH MORTAR. FINISH TOP OF WALL WITH STONE.
  - 18" X 14" X 3/4" PLATE WITH (6) 14" X 1-1/4" GALVANIZED STEEL "J" BOLT AND NUTS. (FIG. #1)
  - #3 REBAR. 12" O.C.E.M.
  - 3" LIMESTONE BASE MATERIAL AS PER SPECIFICATIONS.
  - (5) #6 BARS EVENLY SPACED.
  - #3 SPIRAL BASKET WITH 6" PITCH. ONE FLAT TURN AT TOP AND BOTTOM.
  - UNDISTURBED SOIL OR FILL COMPACTED TO 95% S.P.D.
- NOTES:  
 1. ALL STEEL IS TO BE GALVANIZED AFTER FABRICATION. ON SITE WELDING WILL NOT BE PERMITTED. 'COLD' GALVANIZING WILL NOT BE PERMITTED.

SECTION: SHADE STRUCTURE SIDE

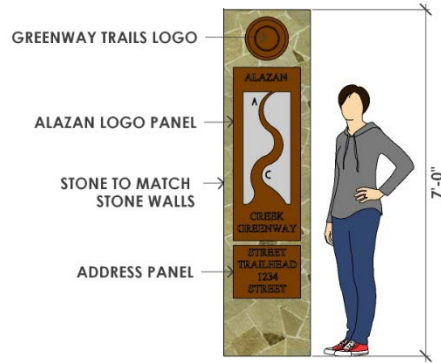


RESPEC

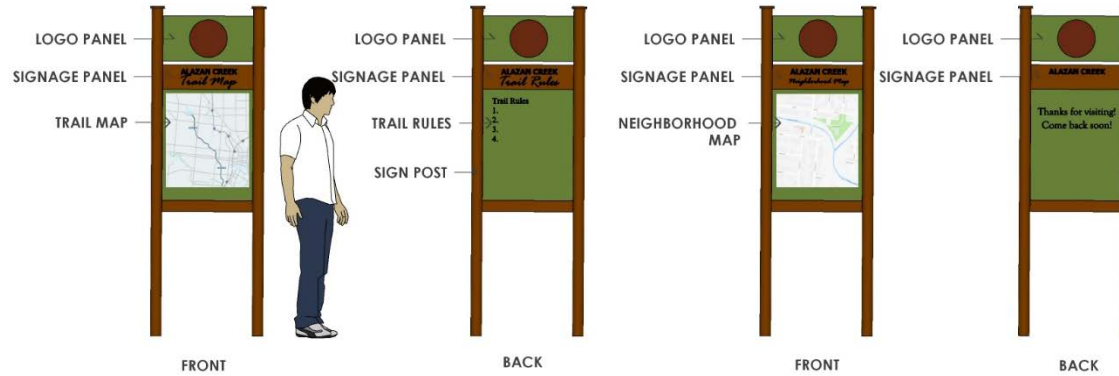


# SIGNS AND WAYFINDING

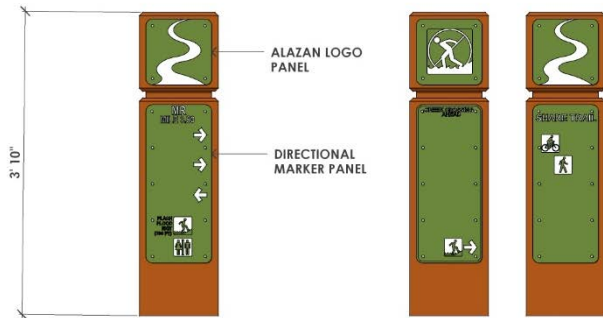
## MONUMENT SIGNAGE



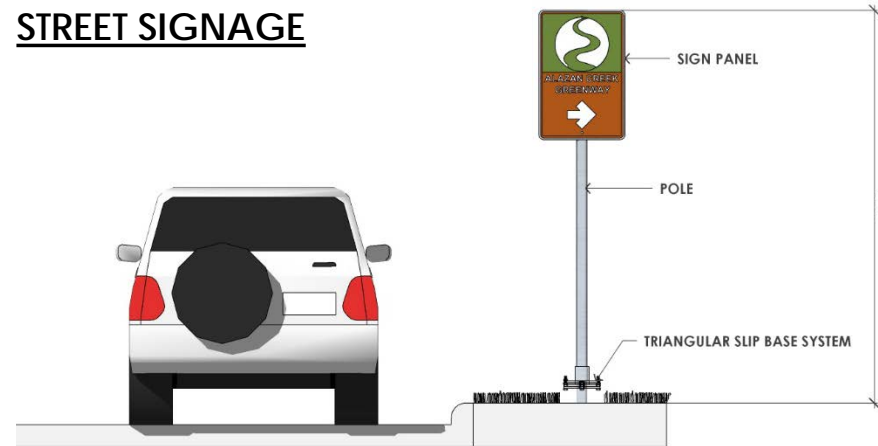
## WAYFINDING SIGNAGE



## DIRECTIONAL SIGNAGE



## STREET SIGNAGE





# Summary

- Awaiting USACE and railroad approvals
- 100% design documents late August 2018
- Anticipated Community open house for Pool Project in Fall 2018.



# Questions?







SAN  
PEDRO  
CREEK  
CULTURE PARK

August 21, 2018







# Updates

- Phase 1.1
  - Punchlist items
  - Arsenal Pump Station
  - Santa Rosa Pedestrian Crossing
- Phase 1.2
  - Design Status
  - Construction Activities
  - Calder Alley Archaeological Mitigation
  - Commerce Street Closure



# Phase 1.1 Update

- SDJV working to complete punchlist items by August 31
  - Additional rails
  - Inlet lighting
- Terrazzo bench installation completed
- Arsenal Pump Station Completion week of August 6





# Safe for wading, not swimming!











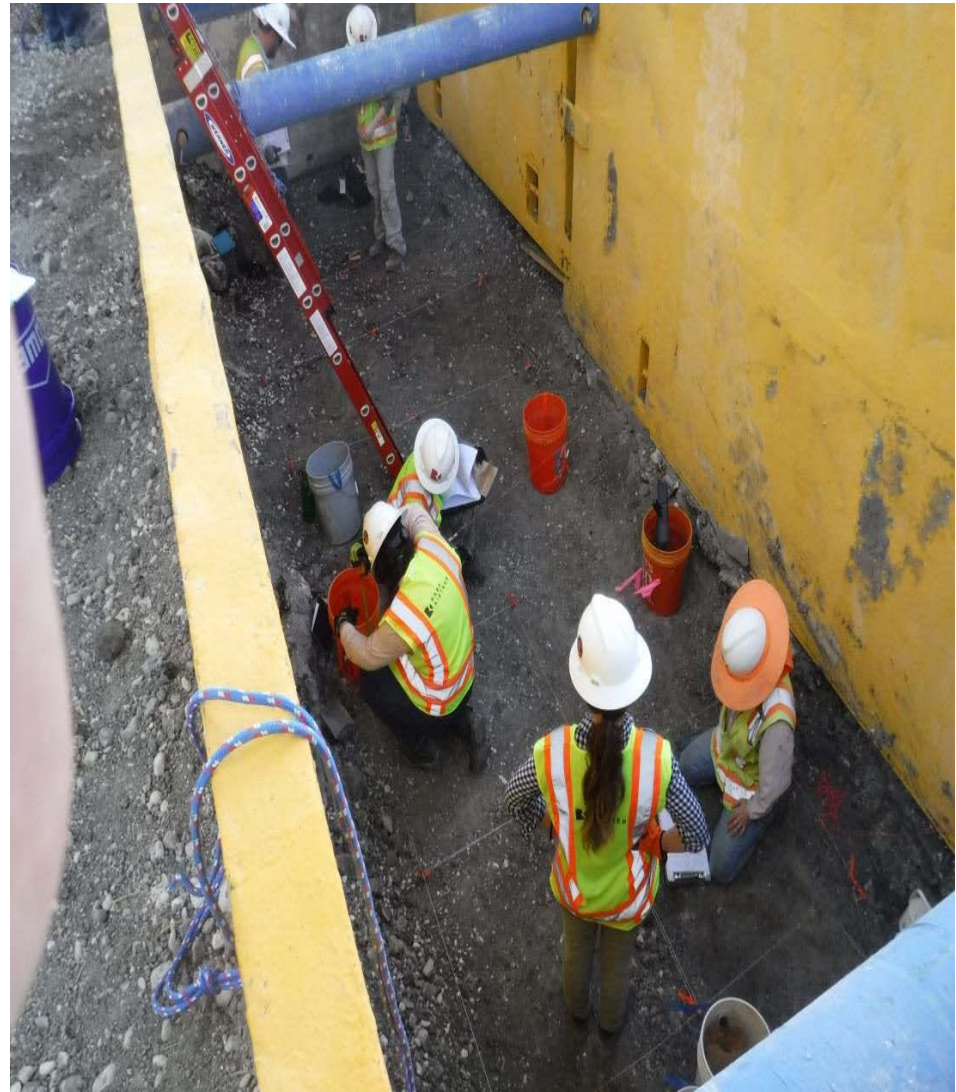




# Phase 1.2 Construction Update

- Early Work Package 11: Demolition and Utility relocation
- Utility relocation work ongoing
  - Commerce Street gas, electric, water, wastewater
- Calder Alley archeological mitigation has begun
  - Approximately 2 week duration



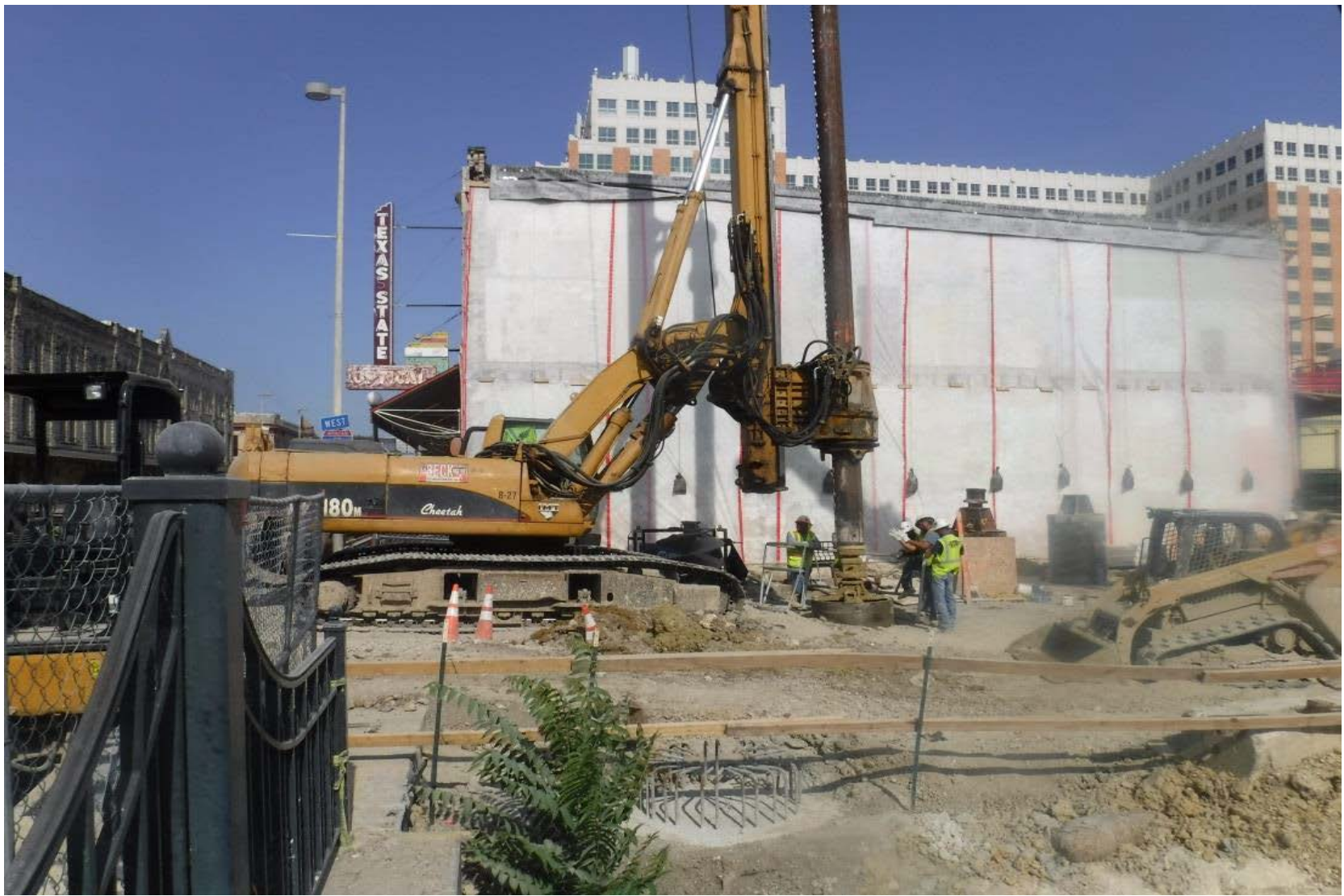




# Phase 1.2 Construction Update

- Early Work Package 12: Heavy Civil Construction
- Drilled pier construction
  - Former Dollar General site
  - Penners parking area
  - Houston lot









# Commerce Street Closure

- Full closure began June 25
  - 3-month duration
- One lane open beginning late September
  - 13-month duration
- South half of bridge has been demolished
- Additional signs being made for pedestrian wayfinding













# Phase 1.2 Upcoming Closures

In order to accommodate for the necessary utility relocations, bridge demolition and bridge reconstruction, Commerce Street will have the following street and lane closures:



**Late June - Late Sept. 2018**

Full closure of Commerce Street from N. Laredo Street to Camaron Street.



**Late Sept. 2018 - Late Feb. 2019**

North lane open. *South lanes closed.*



**Late Feb. - Aug. 2019**

South lane open. *North lanes closed.*















# Phase 1.2 Design Update

- 100% design plans submitted July 31
- Design review meetings
  - Subcommittee
  - Bexar County and COSA
- Guaranteed Maximum Price (GMP) submittal September 25
- Presentation of design and GMP to Bexar County Commissioners Court in October



# Partner Coordination

- Executive Committee
  - David Smith, County Manager, Bexar County
  - Lori Houston, Assistant City Manager, City of San Antonio
  - Mike Frisbie, Director, Transportation and Capital Improvements, City of San Antonio
  - Suzanne Scott, General Manager, San Antonio River Authority

Next Meeting – August 17<sup>th</sup>





# QUESTIONS & COMMENTS





SAN  
PEDRO  
CREEK  
CULTURE PARK





# PROGRAMMING & EVENTS





# PROGRAMMING & EVENTS

Since the Park opened....

- 10 events serving 1,000-1,200 people
- 14 yoga classes
- 3 public tours (one with dogs!)
- 10 bands/musicians
- 3 workshops
  - Accordion, Photography, Drums
- 10 food vendors
- 6 artist vendors





# PROGRAMMING & EVENTS

Coming up....

- Workshops/classes
- Holiday Season
  - Celebrating multicultural holiday traditions
  - Main event: December 8
  - Temporary Art installation
    - Mid-November to mid-January
    - Light based artwork
- Continued outreach to local arts organizations



# TRICENTENNIAL ARTWORK

- Contract with Rodriguez-Gerada suspended
- Request for Qualifications released July 30
  - Deadline to apply is August 30 via [www.PublicArtist.org](http://www.PublicArtist.org)
  - All professional artists are eligible to apply regardless of residence
  - Total budget for artwork is \$425,000
  - Up to three finalists will be selected to develop proposals
- Additional information posted at [www.spcculturepark.com](http://www.spcculturepark.com) and [www.sara-tx.org](http://www.sara-tx.org)





# TRICENTENNIAL ARTWORK

## Schedule (subject to change)

August 9	Artist Information Meeting and Site Visit
August 30	Request for Qualifications deadline
Week of Sept 17	Selection panel reviews applications and selects finalists
October 24	Proposals due from selected finalists
Week of Oct 29	Finalist interviews conducted, artist selected
November	Bexar County Commissioners Court approval of selected artist
Winter 2019	Artwork installation complete



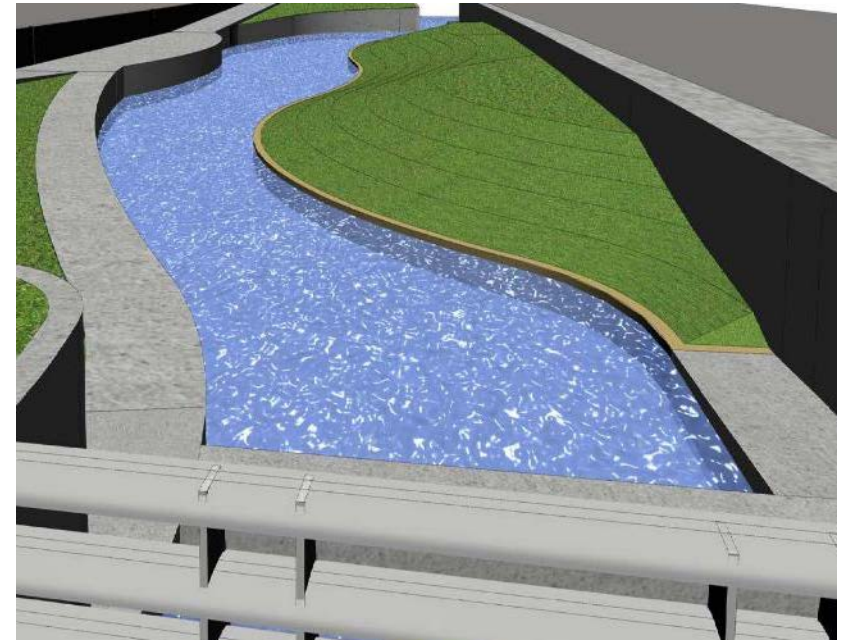
# PHASE 1.2 - ART OPPORTUNITIES



5-Part Mural



Water Wall



Sculpture Lawn





QUESTIONS?

