



SAN ANTONIO  
RIVER AUTHORITY

Leaders in Watershed Solutions

Westside Creeks Restoration Oversight Committee

10 Years of Leadership and Service

**2008 - 2018**

INSPIRING ACTIONS FOR HEALTHY CREEKS & RIVERS

# 10 Years of Accomplishments



# Elmendorf Lake Park Improvements Ground Breaking March 31, 2015



# Martinez Creek Trail Groundbreaking April 21, 2015





**Alazan Creek Trail  
Grand Opening  
June 18, 2016**



# Apache Creek Trail Grand Opening July 9, 2016





# San Pedro Creek Trail Grand Opening August 20, 2016





# Congratulations WCROC!

Thank you for all that you do!







SAN  
PEDRO  
CREEK  
CULTURE PARK

Est. May 5<sup>th</sup> 2018



# Grand Opening



# Grand Opening

Attendance:

- estimated 4-5,000



# Grand Opening



# Grand Opening



Credit: Tom Reel - San Antonio Express-News

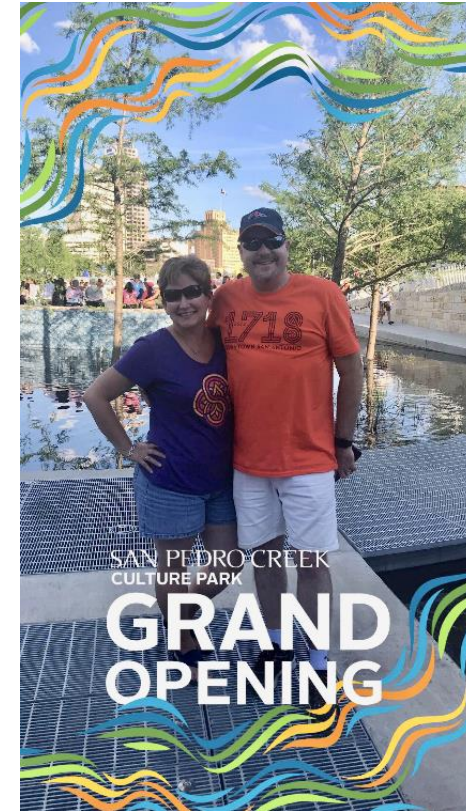
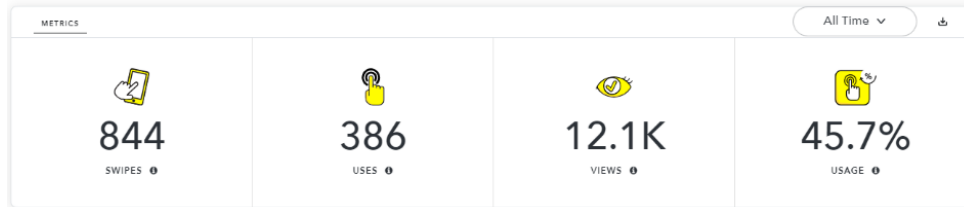


# Grand Opening



# Social Media

- **Facebook** - 5,113 total fans
  - (Increase by 18.03% since April 5)
- **Instagram** - 1,686 total fans
  - (Increase by 22.35% since April 5)
- **Twitter** - 935 total followers
  - (Increase by 12.24% since April 5)
- **Snapchat**



# Mobile App

- **iOS downloads**
  - 176 installations of iOS version
- **Google Play**
  - 149 installs of Android version
- **TOTAL: 325 downloads**







# Phase 1.2 Construction Update

- Early Work Package 11: Demolition and Utility relocation
- Additional Calder Alley Archeological Mitigation
- Raba Kistner developing plan for additional investigations
  - Plan to be submitted to COSA OHP and THC for approval

















# Phase 1.2 Construction Update

- Early Work Package 12: Heavy Civil Construction
- AH Beck mobilized to the site of the Dollar General to begin drilled piers on 4/30
- Groundwater mitigation required
  - Initial testing did not find contaminants above the minimum levels
  - No treatment required before discharging into creek
  - Continual testing will be conducted



# Phase 1.2 Construction Update

- Commerce Street construction
- Full closure to begin in June
  - 3-month duration
- One lane open beginning early September
  - 13-month duration
- Coordination with COSA project team ongoing
  - Street project to let in September



# Phase 1.2 Design Update

- Design team working on 100% completion
  - QA/QC submittal May 31
  - Final submittal June 15
- Guaranteed Maximum Price submittal August 15
- Coordination with SDJV ongoing



# Partner Coordination

- Executive Committee
  - David Smith, County Manager, Bexar County
  - Lori Houston, Assistant City Manager, City of San Antonio
  - Mike Frisbie, Director, Transportation and Capital Improvements, City of San Antonio
  - Suzanne Scott, General Manager, San Antonio River Authority
- May 21: Regular Monthly Meeting
- April 12: City Council approved O&M Agreement



- Routine Activities
  - O&M associated with vegetation, hardscape, recreational features, litter removal, signage, public art, special event support
- Event – Based Activities
  - Graffiti,
  - Vandalism
  - Safety concerns (ex: Hazard Trees)
  - Rain/flood response



# Hours of Operation and Additional Support

- SPC Park Hours of Operation- 5am-11pm
- Park Police patrol- 7am- 10pm continuously. Bike patrol throughout the night time hours
- Centro coverage- 6am-8pm
  - Daily trash and recycling removal and cleaning of area with pan and broom
  - Site amenities and art wiped clean daily and as needed
  - Removal of graffiti, gum



# Other Considerations

- Water contact-
  - Wading in the Plaza de Fundacion only
  - No swimming allowed
  - No drinking or ingestion of water
- Bicycles- allowed on the paseos and street
- Segways- motorized vehicles are not allowed on the paseos
- Signage- Water contact, share the trail signs will be installed along the project



# QUESTIONS & COMMENTS







SAN  
PEDRO  
CREEK  
CULTURE PARK



# ART PROGRAMMING & EVENTS

« Previous Events

tuesday  
May 15

## Todo Latino

Time: 5pm - 8pm

Location: San Pedro Creek Culture Park

saturday  
May 19

## Main Squeeze

Time: 9am - 12pm

Location: San Pedro Creek Culture Park

tuesday  
May 22

## POP

Time: 5pm - 8pm

Location: San Pedro Creek Culture Park

saturday  
May 26

## Artists at Work

Time: 9am - 12pm

Location: San Pedro Creek Culture Park

saturday  
June 9

## Through the Lens

Time: 8am - 5pm

Location: San Pedro Creek Culture Park

# MAY 8

## *The Beat of Your Drum*

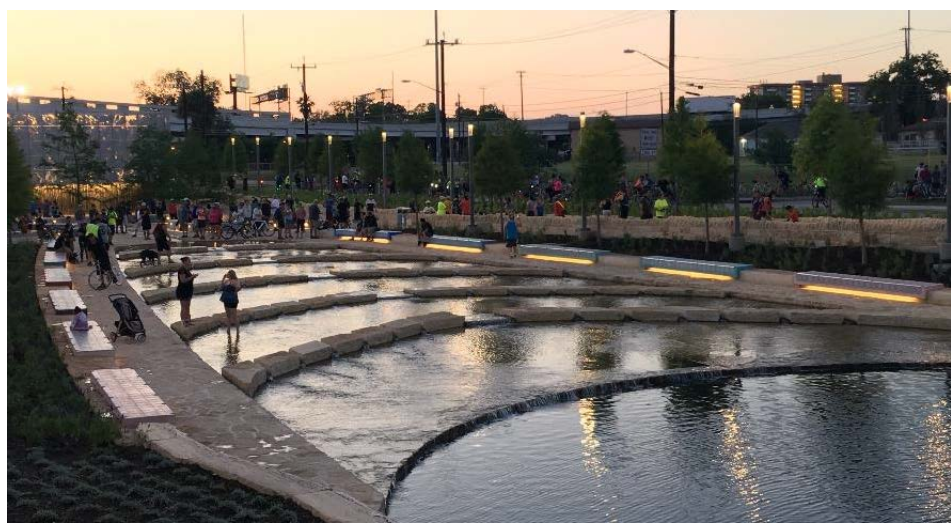
Drum Café  
Real Musiq Street Performers  
Pepito's Italian Ice  
The Grate BBQ Co.



# MAY 8

## *The Beat of Your Drum*

Drum Café  
Real Musiq Street Performers  
Pepito's Italian Ice  
The Grate BBQ Co.



# MAY 12

## *Mums the Word*

Mariachi Azul

Panifico Bake Shop

Pepito's Italian Ice

LMG Photography (Photo Booth)

Free Flowers for Mom

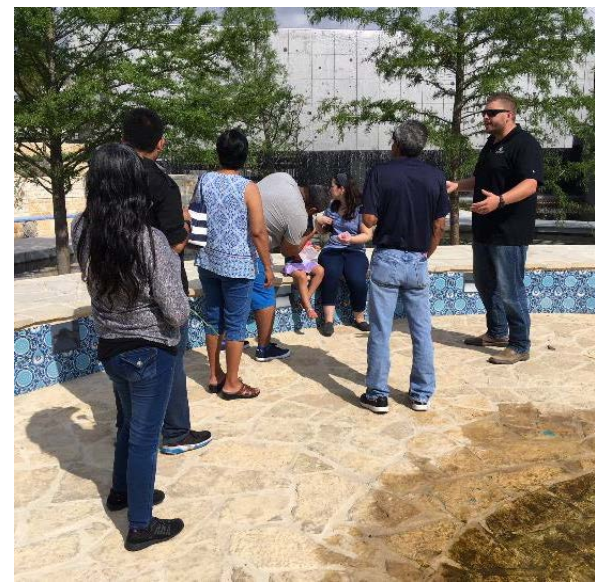
Tour with special guest Chad Yount



# MAY 12

## *Mums the Word*

Mariachi Azul  
Panifico Bake Shop  
Pepito's Italian Ice  
LMG Photography (Photo Booth)  
Free Flowers for Mom  
Tour with special guest Chad Yount



# TONIGHT!

*Todo Latino*



**QUESTIONS?**





# Westside Creeks Restoration Oversight Committee Meeting



CITY OF SAN ANTONIO  
PARKS & RECREATION



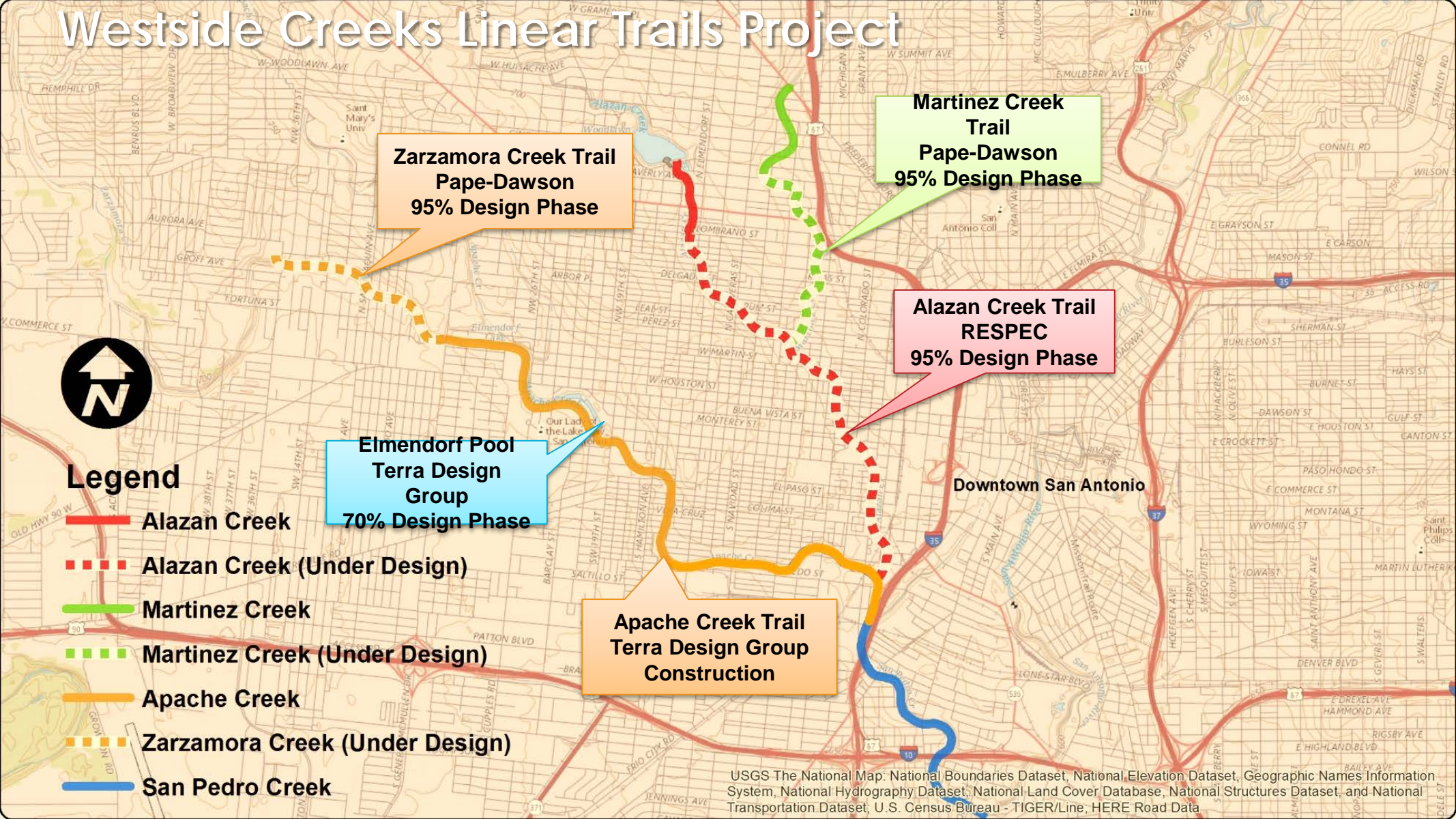
SAN ANTONIO  
RIVER AUTHORITY  
Leaders in Watershed Solutions

## Linear Creekway Trails and Elmendorf Lake Park

Hillary Lilly (SARA) & Robert Solari (Pape-Dawson)

May 15, 2018

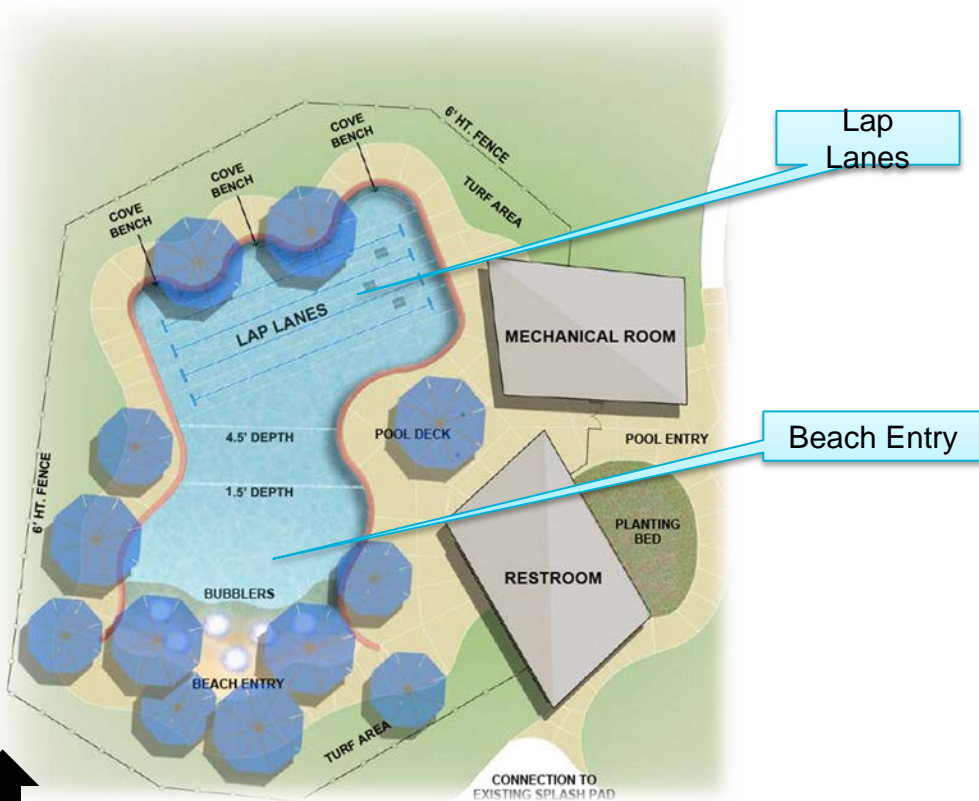
# Westside Creeks Linear Trails Project



# ELMENDORF POOL LAYOUT

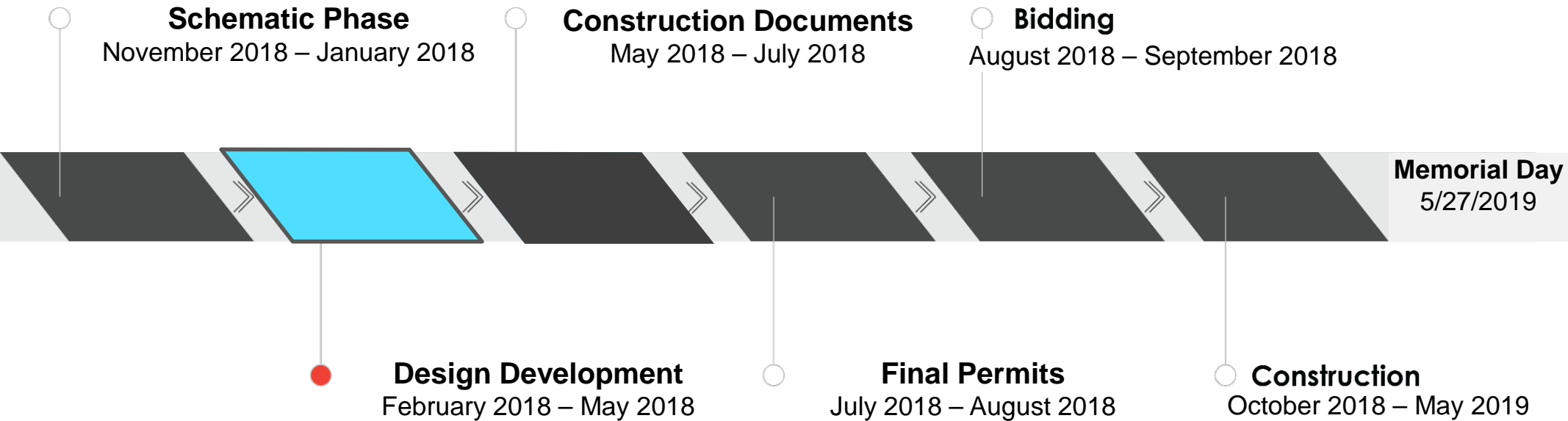


# ELMENDORF POOL IMPROVEMENTS



- Funded by the City of San Antonio through the 2017 Bond Program Funding
- Managed by the San Antonio River Authority
- Features a zero entry pool
- Swimming area with three 25m lap lanes
- Pool area 6,060 square feet
- Restrooms with changing stalls
- Seating areas around pool

# ELMENDORF POOL SCHEDULE



# ALAZAN CREEK TRAIL OVERVIEW

- 30% Design – Complete
- Public Meeting #1 – Complete
- 60% Design – Complete
- Public Meeting #2 – Complete
- **95% Design – May 2018**
- **USACE and Union Pacific Railroad coordination**
- **Bid Award – Late 2018**
- **Construction – Early 2019**



CITY OF SAN ANTONIO  
PARKS & RECREATION

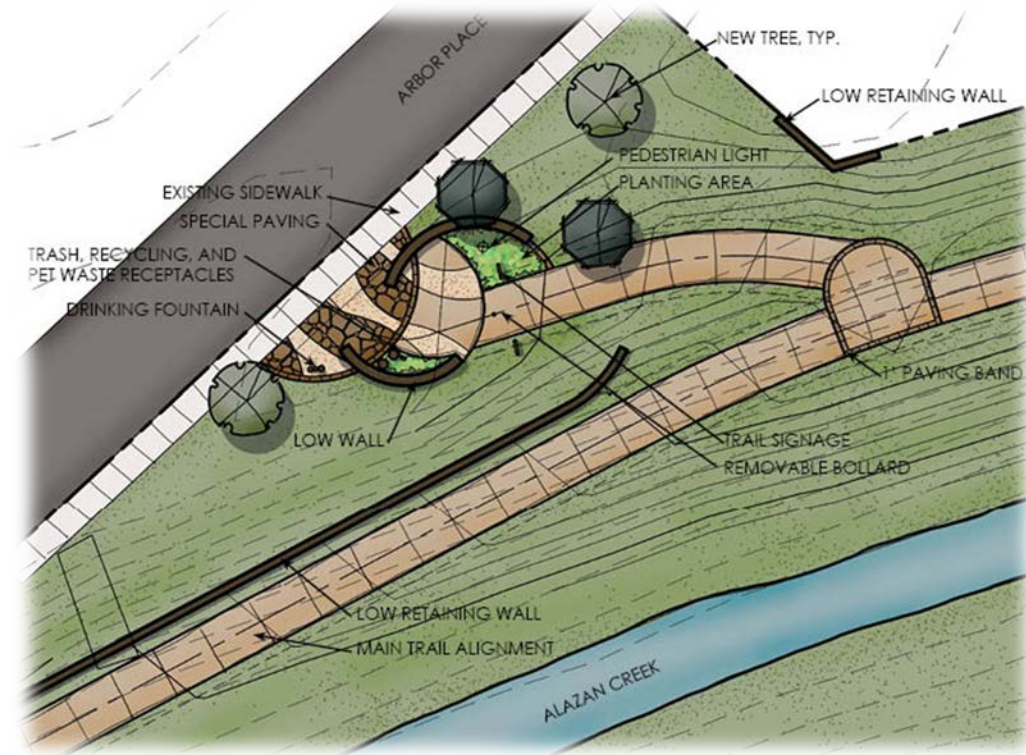


SAN ANTONIO  
RIVER AUTHORITY  
Leaders in Watershed Solutions

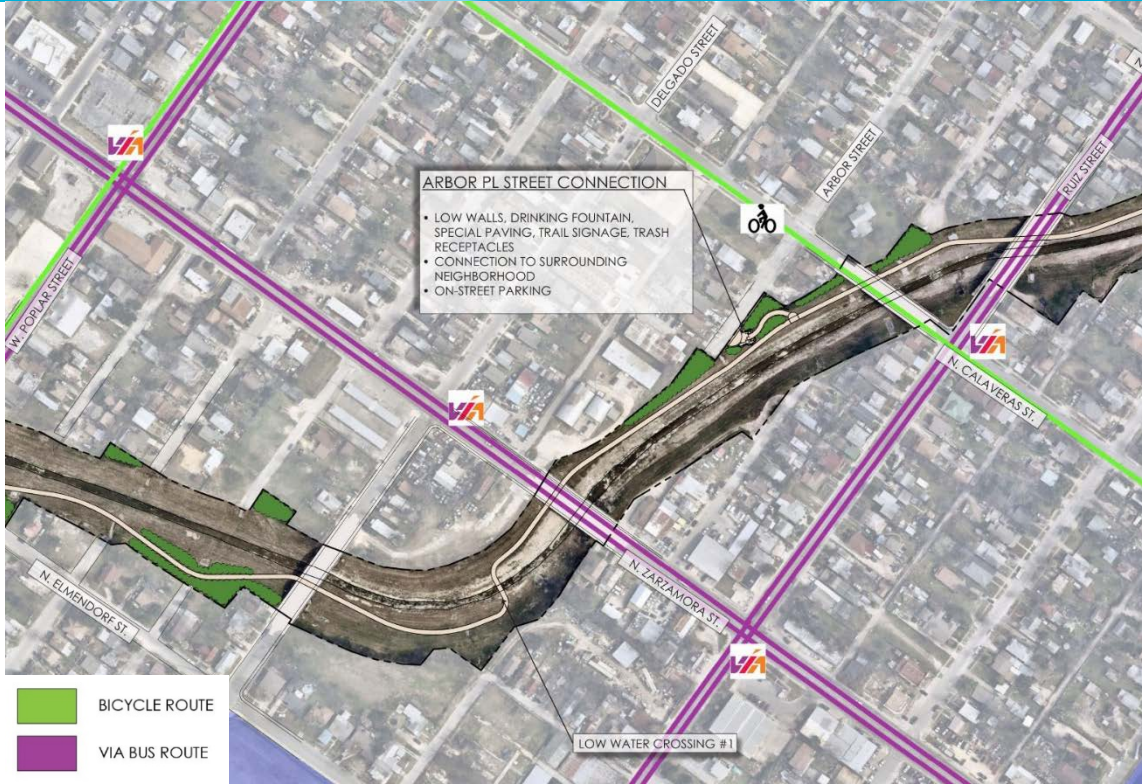


# ALAZAN CREEK TRAIL STREET CONNECTIONS

- Provide access points to the trail for the community
- Connect to existing and proposed landmarks
  - schools
  - parks
- Provide areas of rest and shade
- Slow down bicycle traffic at streets
- Provide signage with interpretive elements, wayfinding and trail rules



# ARBOR STREET CONNECTION







# MARTINEZ CREEK TRAIL OVERVIEW

- 40% Design – Complete
- Public Meeting #1 - Complete
- 70% Design – Complete
- Public Meeting #2 - Complete
- SAWS coordination - Complete
- **USACE Coordination**
- **95% Design – June 2018**
- **Bid Award – Late 2018**
- **Construction – Late 2018**



CITY OF SAN ANTONIO  
PARKS & RECREATION



# MARTINEZ CREEK GENERAL DESIGN ITEMS

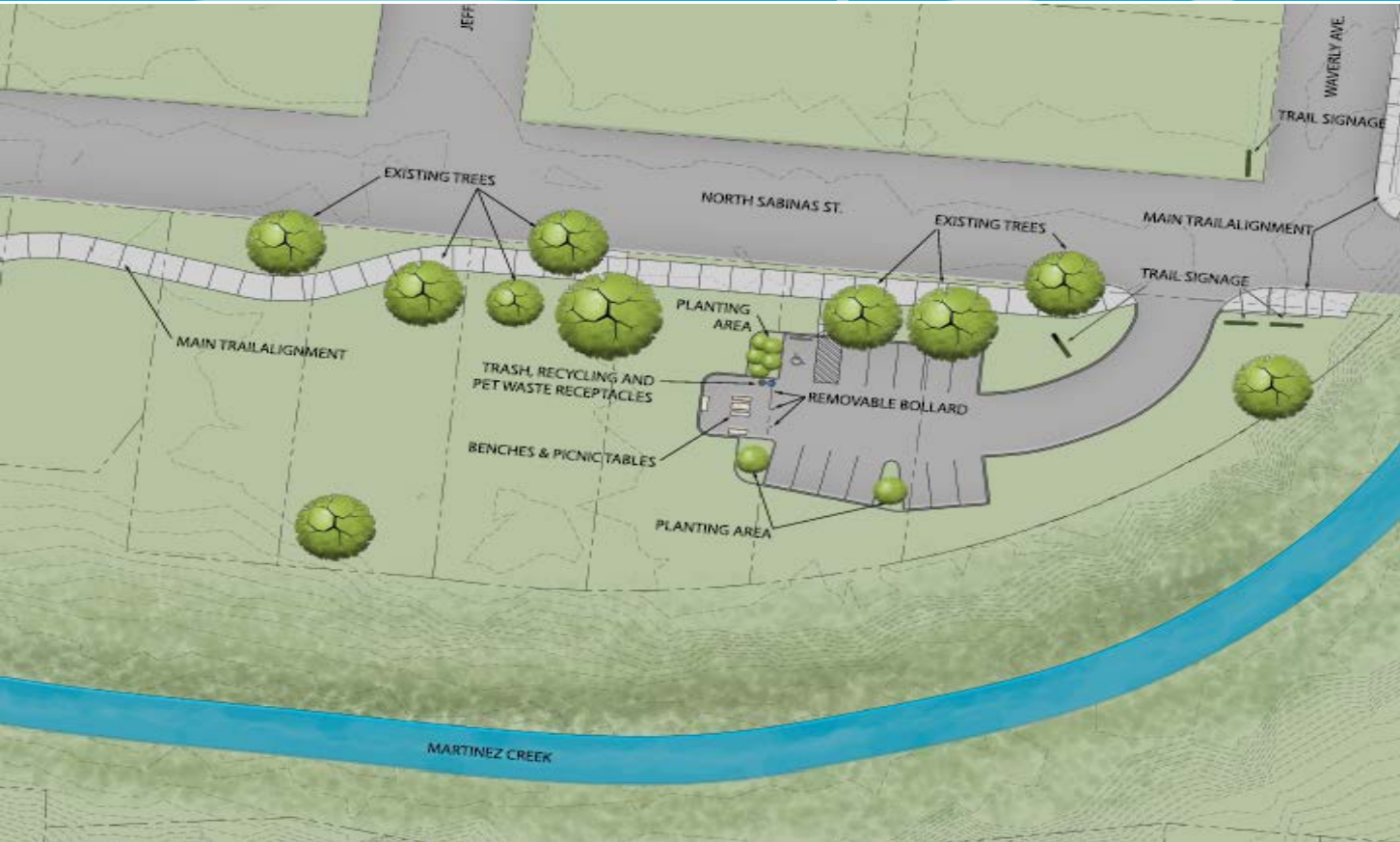
- TRAIL DETAILS

- 7,700 LINEAL FEET
- 10 STREET CONNECTIONS (4 TRAIL HEADS)
- TRAIL WIDTH IS 10' AND 6 INCHES THICK
- APPROXIMATELY 12 WALLS ALONG THE PATH
- 8' CLEARANCE UNDER BRIDGES (MINIMUM)
- 2 LOW WATER CROSSINGS
- FLOOD STUDY TO BE FINALIZED WITH THE 95% SUBMITTAL



# MARTINEZ CREEK TRAIL

## N SABINAS ST TRAILHEAD



- Provide access points
- Connect to landmarks
  - Schools
  - Parks
  - Public buildings
- Provide areas of rest
- Safety
- Easy to navigate

# MARTINEZ CREEK TRAIL



UNIVERSITY AVE CONNECTION

# MARTINEZ CREEK TRAIL



TRAIL REST STOP

# ZARZAMORA CREEK TRAIL OVERVIEW

## Design/Construction Schedule

- 40% Design – Complete
- Public Meeting #1 - Complete
- 70% Design – Complete
- Public Meeting #2 - Complete
- 95% Design – June 2018
- Bid Award – Late 2018
- Construction - Late 2018 (awaiting SAWS project)



CITY OF SAN ANTONIO  
PARKS & RECREATION



SAN ANTONIO  
RIVER AUTHORITY  
Leaders in Watershed Solutions



# ZARZAMORA CREEK GENERAL DESIGN ITEMS

- TRAIL DETAILS

- 7,600 LINEAL FEET (Phase 1 – to Memorial, approx. 2,350 lineal feet)
- 8 STREET CONNECTIONS (4 TRAIL HEADS)
- TRAIL WIDTH IS 10' AND 6 INCHES THICK
- APPROXIMATELY 12 WALLS ALONG THE PATH
- 8' CLEARANCE UNDER BRIDGES (MINIMUM)
- 2 LOW WATER CROSSINGS
- FLOOD STUDY TO BE FINALIZED WITH THE 95% SUBMITTAL





# SAN IGNACIO TRAILHEAD



- Provide access points
- Connect to landmarks
  - Schools
  - Parks
  - Public buildings
- Provide areas of rest
- Safety
- Easy to navigate

# ZARZAMORA CREEK @ GEN McMULLEN DR.



## SAN IGNACIO TRAILHEAD

# ZARZAMORA CREEK

29<sup>th</sup> STREET



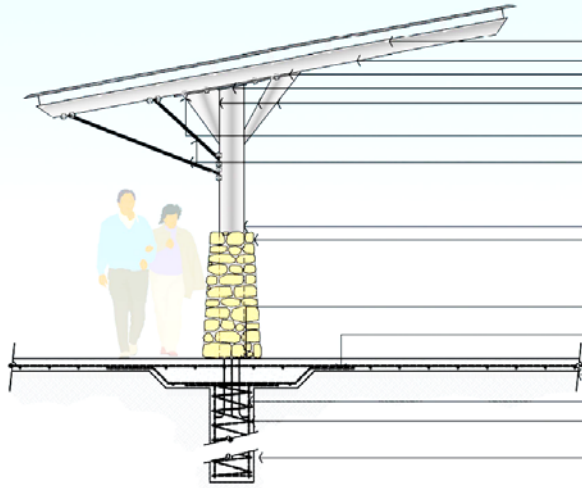
Ximenes & Associates, Inc.

# ZARZAMORA CREEK



**GENERAL TRAIL/CREEK SECTION**

# AMENITIES



- STANDING SEAM METAL ROOF, MEGI 12" O.C. X 1 3/4" HT. X 24 GA. LOCK SEAM OR EQUAL, GALV. FINISH, ATTACH WITH ZINC PLATED 1/4" X 3/4" SCREWS.
- 2" X 4" X 3/16" RECTANGULAR STEEL TUBING PERIMETER, MITER CORNERS, AND WELD ALL SIDES.
- (2) 1/2" X 5" GALV. CARRIAGE BOLT, WASHER AND NUT (TYP).
- 6" X 5.9" W/ AT 15 LBS. PER LIN. FT. WIDE FLANGED I BEAM.
- 6" W X 4'-0" L X 3/4" THK. STEEL PLATE WELDED TO STEEL POST TOP.
- 1/2" GALV. STEEL BRACING, BUTT WELD AND GRIND WELDS SMOOTH. 3 PLATES ON FRONT SIDE. 1 PLATE ON BACK SIDE.
- 1" DIA. GALV. STEEL HEX HEAD BOLTS, NUTS AND WASHERS. (4) PER SIDE.
- 1-1/2" DIA. GALV. STEEL SUPPORT ROD ATTACHED TO 6" X 6" X 3/4" WELD PLATE BOLTS (2) I BEAMS WITH FOUR 2 1/2" X 3/4" GAL. HEX BOLTS AND NUTS. FABRICATE RODS WITH ATTACHMENT PLATE PRIOR TO GALVANIZE. MIN. 80" CLEARANCE TO LOWEST SUPPORT ROD.
- 10" X 5" W/ AT 50 LBS. PER LIN. FT. WIDE FLANGE I BEAM.
- STONE MALL. STONE TO BE ROUNDED NATIVE LIMESTONE. SIZES TO VARY FROM 6" -15" DIA. MORTAR TO BE LIGHT GRAY. FILL ALL VOIDS BETWEEN STONE AND STEEL POST WITH HIGH STRENGTH MORTAR. FINISH TOP OF MALL WITH STONE.
- 18" X 14" X 3/4" PLATE WITH (6) 1/4" X 1-1/4" GALVANIZED STEEL 1/2" BOLT AND NUTS. (FIG. #1)
- #3 REBAR. 12" O.C.E.A. (FIG. #1)
- 3" LIMESTONE BASE MATERIAL AS PER SPECIFICATIONS.
- (B) #6 BARS EVENLY SPACED.
- #3 SPIRAL BASKET WITH 6" PITCH. ONE FLAT TURN AT TOP AND BOTTOM.
- UNDISTURBED SOIL OR FILL COMPACTED TO 95% S.P.D.
- NOTES:  
1. ALL STEEL IS TO BE GALVANIZED AFTER FABRICATION. ON SITE WELDING WILL NOT BE PERMITTED. GOLD GALVANIZING WILL NOT BE PERMITTED.

SECTION: SHADE STRUCTURE SIDE



RESPEC

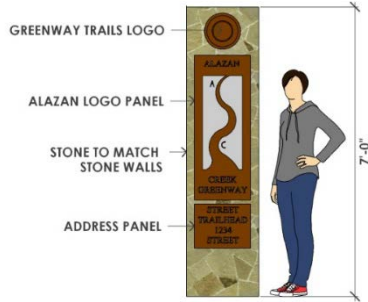


CITY OF SAN ANTONIO  
PARKS & RECREATION

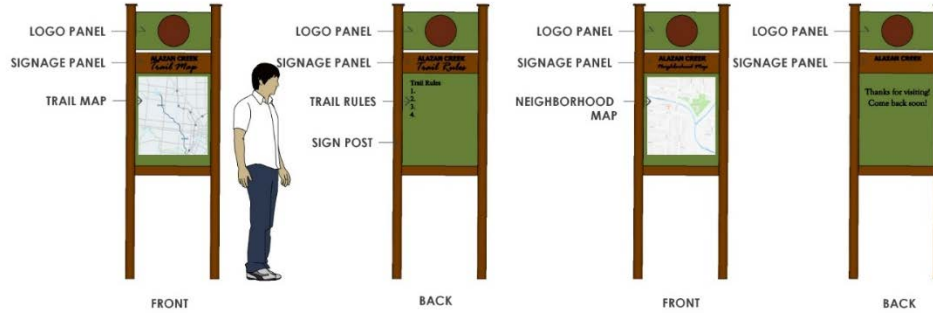


# SIGNS AND WAYFINDING

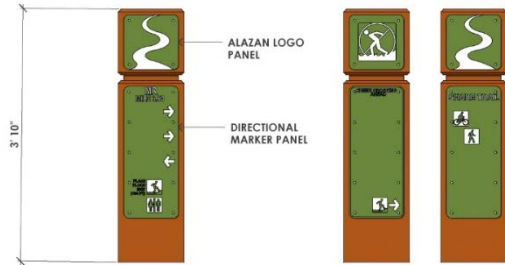
## MONUMENT SIGNAGE



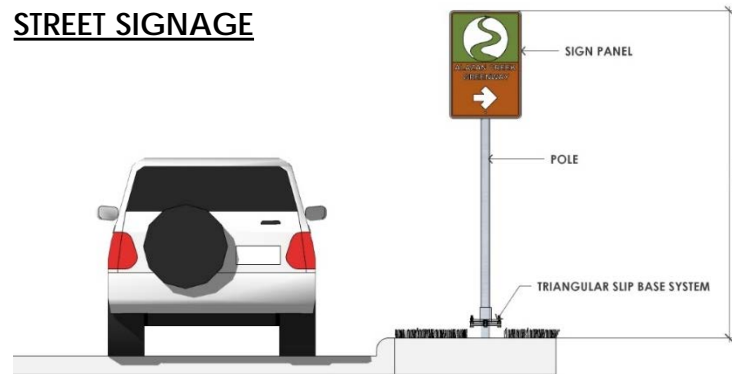
## WAYFINDING SIGNAGE



## DIRECTIONAL SIGNAGE



## STREET SIGNAGE



# Summary

- Awaiting USACE and railroad approvals
- 100% design documents this summer
- Schedule open house in Summer 2018 “here we come”



CITY OF SAN ANTONIO  
PARKS & RECREATION



# Questions?



CITY OF SAN ANTONIO  
PARKS & RECREATION



SAN ANTONIO  
RIVER AUTHORITY  
Leaders in Watershed Solutions

